

Process JSD# 110790

1622

55A

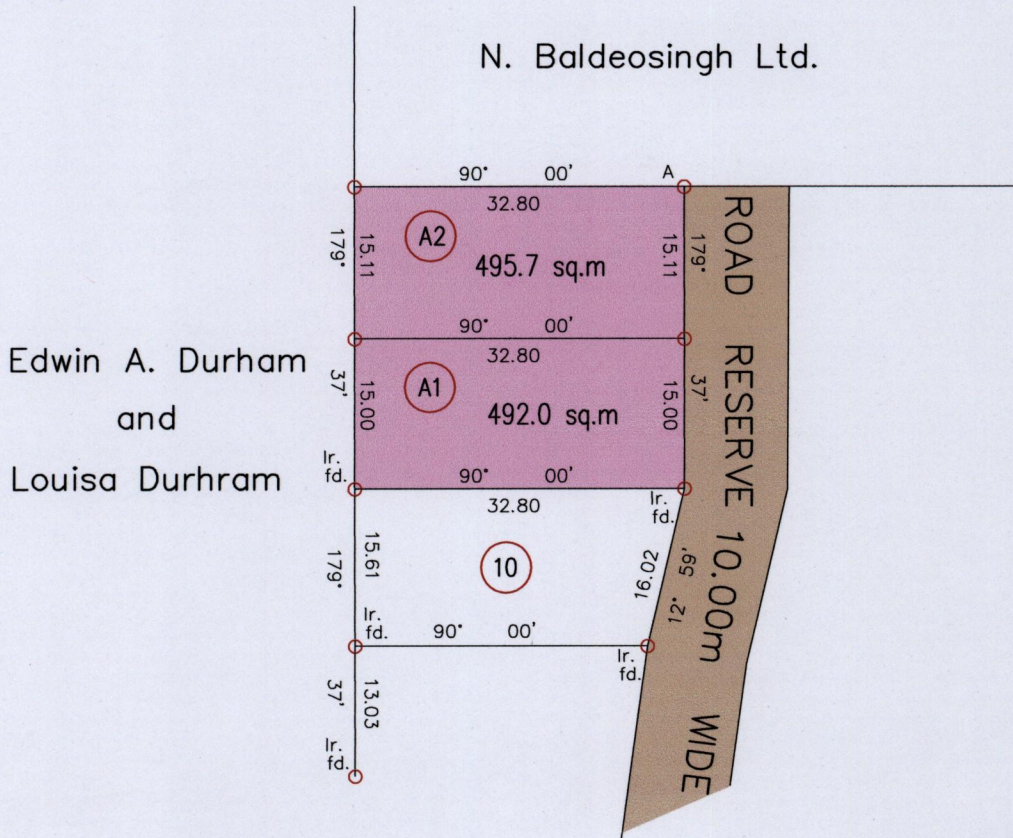
176

Cadastral Sheet 4/b/2 H.2.A.

Ward of Charuma.

County of Nariva.

G. N. Cassini



GPS: W.G.S. 84 (Zone 20) reading at A
N 1139720 E 696739 Accuracy (+/-2.0m)

○ Denotes Iron put unless otherwise stated
Bearings are Cassini Grid based on Solar observations

PLAN of 2 Parcels of land coloured pink in the Ward of Charuma.
Containing together nine hundred and eighty seven point six square metres.
Surveyed by me, with due authority, in June, 2015 for N. Baldeosingh Ltd.
Certified correct in accordance with Regulation 25 (1) of the
Land Surveyors' Regulations 1998,

See JT.8

SCALE 1:750

Distances are in METRES

Entered:

[Signature] T.T.L.S.

Trinidad & Tobago Land Surveyor 3 - 7 - 2015

