

U.P.R.N No.....

R.D. 4140 of 1958

Cadastral Sheet H.10.E. 66B
2/b

1622

Ward of Guayaguayare

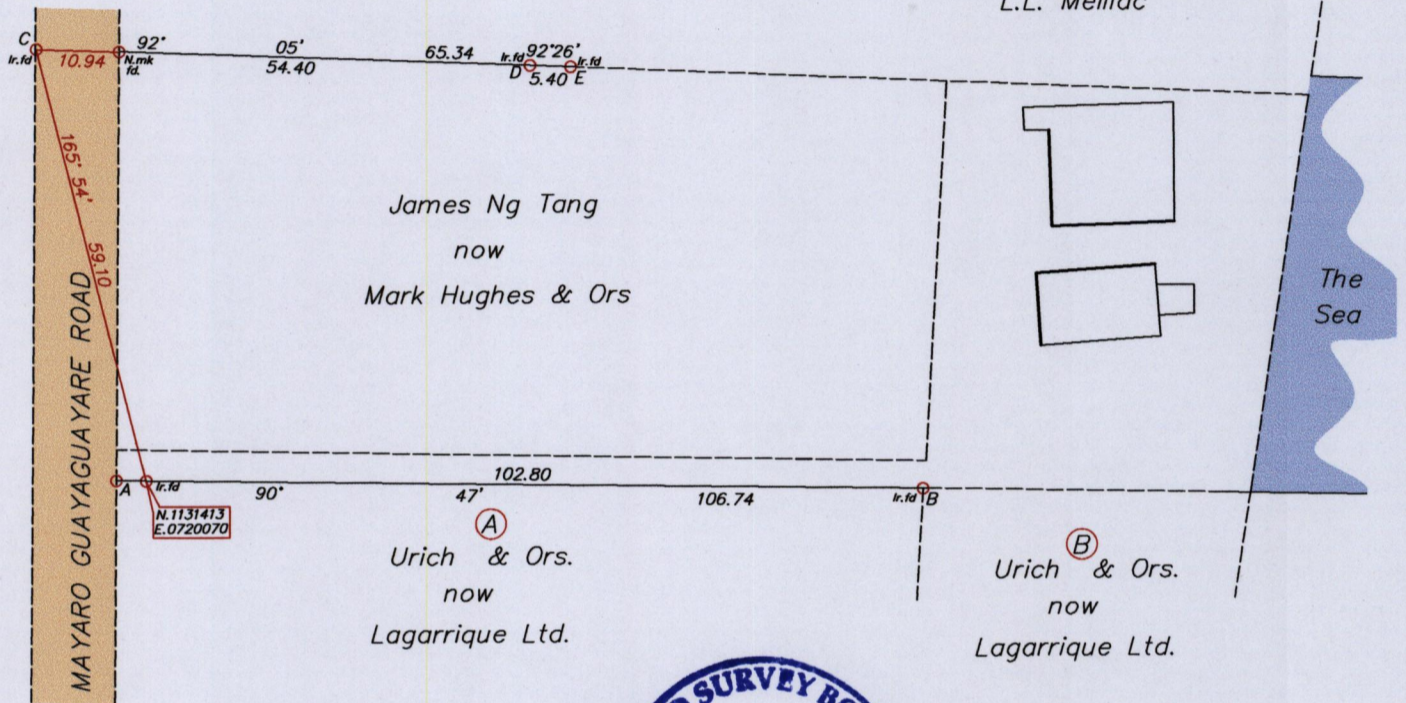
County of Mayaro

172

Process ~~JD~~ 110732

G. N.
U.T.M.

Heirs of Elizabeth Crevelle
now
L.L. Meillac



See Bk.1113 Fol.102

Co-ordinates are based on Handheld G.P.S

Naparima B.W.I (-/+ 5.00m)

○ Denotes Iron put except where otherwise stated

Bearings are U.T.M. Grid based on Solar Observations

Note : To obtain Cassini bearings add 18 minutes

Plan of certain boundary lines A-B, C-D, D-E, in the Ward of Guayaguayare

Redefined by me, with due authority, in June 2015 at the request of Rishi Harditsingh

Certified correct in accordance with Regulation 25 (1) of the Land Surveyors' Regulations 1998.

Scale 1/1000

Distances are in Metres

Hugo Somarsingh

Entered on.....

Trinidad and Tobago Land Surveyor(T.T.L.S.)... July 2015

