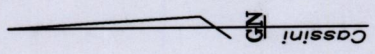
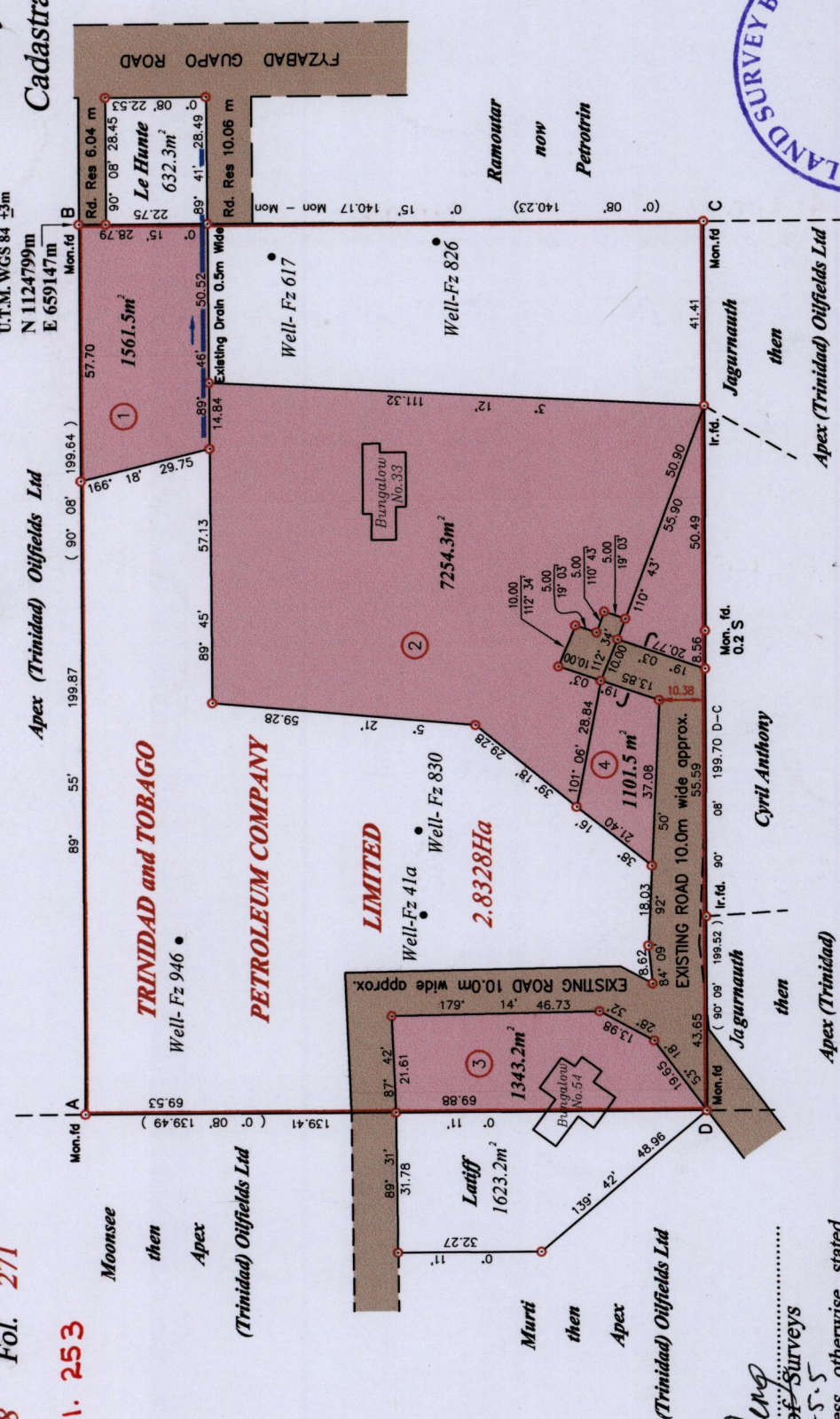


Ward of Siparia
County of St. Patrick
Cadastral Sheet G.11.L. 63D
3/a

R.P.O. Vol. 24 Fol. 21
C.T. Vol. 4618 Fol. 271
Vol. 5138 Fol. 253

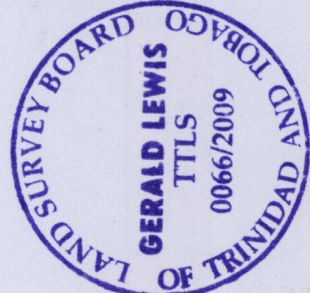


Hand Held GPS
U.T.M. WGS 84 +3m
N 1124799m
E 659147m



References:
Bk 461 : 90
Bk 993 : 107
Bk 993 : 115
Bk 1137 : 29

SCALE 1:1500
Distance are in metres



Orig Bk. 461 : 90

Approved *[Signature]*
Director of Surveys
2009-5-5

○ Denotes Iron put unless otherwise stated
Bearings are Cassini Grid based on Solar Observations

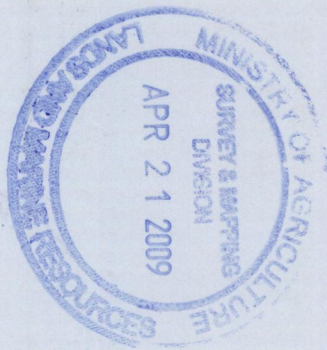
PLAN of 4 Parcels of land coloured pink in the Ward of Siparia
Containing together eleven thousand two hundred and sixty point five square metres.

Surveyed by me, with due authority, in January 2000 and March 2009.

In accordance with regulation 25 (1) of the Land Surveyors' Regulations 1998, I certify that this plan is correct.

Checked by *[Signature]*
Entered.....

[Signature]
Trinidad and Tobago Land Surveyor.....
12/03/2009



Lot No.	Vol. & c.T.	NAME
1		
2	5178 Fol 427	Enid Pierre
3	5178 Fol 147	Arnold Rodney Latiff
4		