

R.P.O. Vol. 169 Fol. 587

Ward of Siparia

C.T. Vol. 3747 Fol. 57

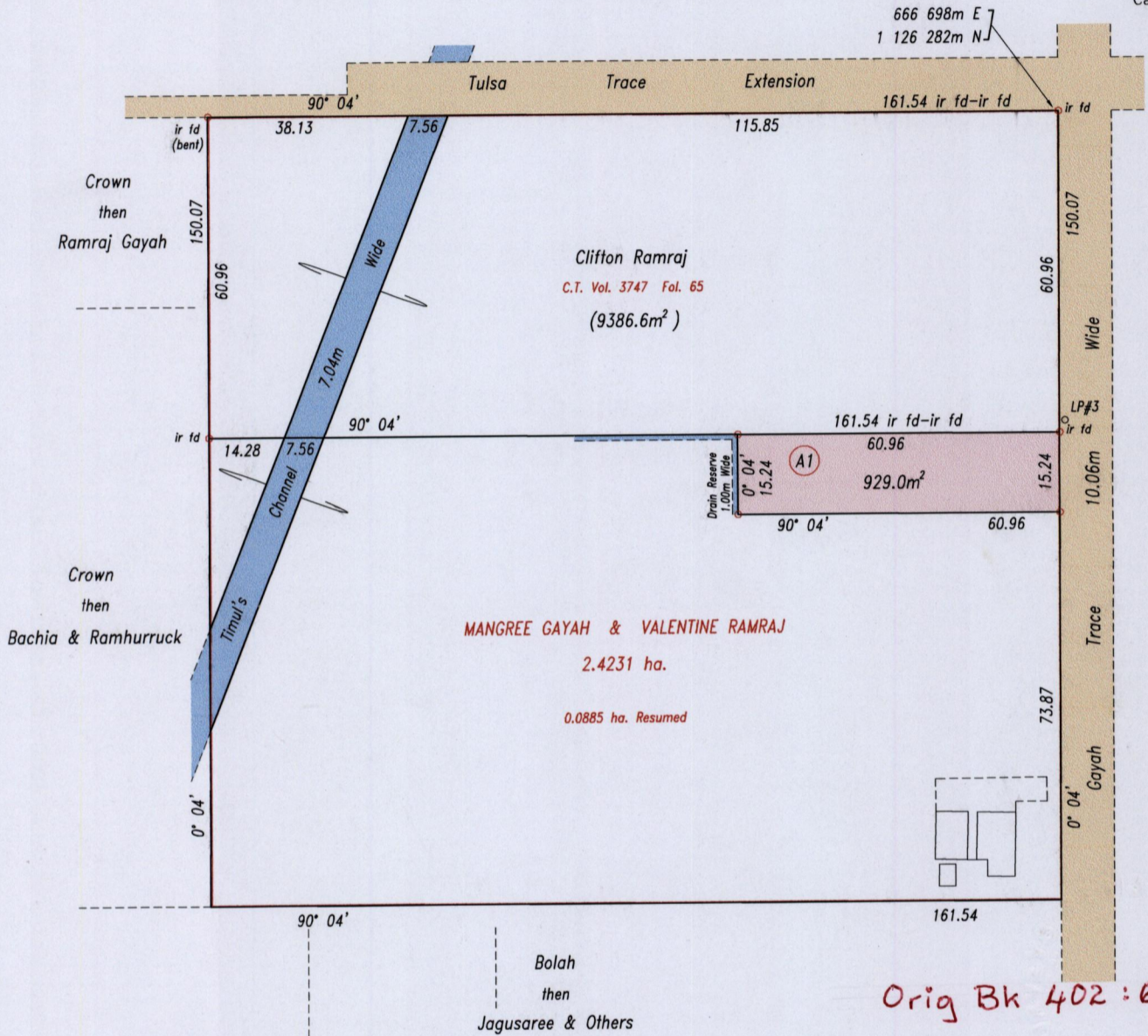
County of St. Patrick

U.P.I.N. No.:

Cadastral Sheet G.12.H. 63E
2/a, 2/c

Vol. 5138 Fol. 261

G.N. Cassini



Orig Bk 402:65

Source: GPS (Hand Held)
Error Statement: +/- 5m
Datum: Naparima, UTM (Zone 20).

Approved
Lynn Roopchand
Director of Surveys
2008.9.15

Reference: Bk.402 Fol.65
Bk.1227 Fol.26

SCALE 1: 1250

Distances are in metres
o Denotes iron put except otherwise stated

Bearings are Cassini Grid based on Solar Observations

PLAN of a parcel of land coloured pink in the Ward of Siparia
Containing nine hundred and twenty nine point zero square metres
Surveyed by me, with due authority, in November 2007

In accordance with Regulation 25(1) of the Land Surveyors' Regulations 1998, I certify that this plan is correct.

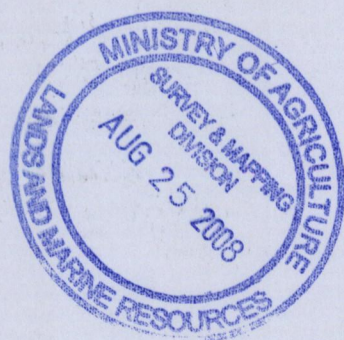
Checked by *Helen 7/9/08*
Entered

L.A. Ripplend
Trinidad & Tobago Land Surveyor *5/8/2008*



Original Bl. 1227: 26

Lot. A1. Hansraj Bhadase



1427/34