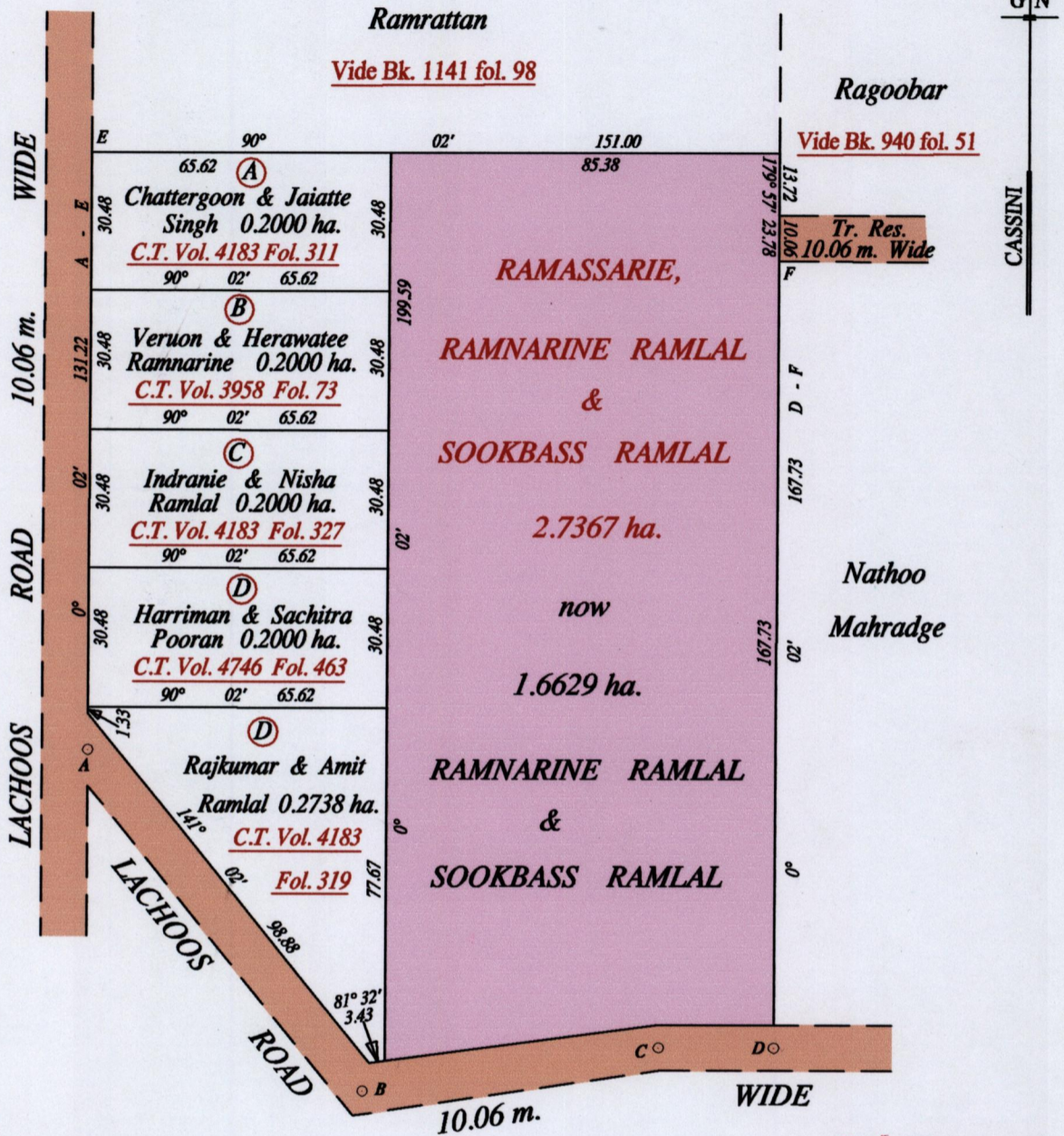


REMAINING PORTION

R.P.O. Vol. 151 Fol. 29
C.T. Vol. 2390 Fol. 77
Vol. 5109 Fol. 273

Ward of Siparia
County of St. Patrick
Cadastral Sheet (G 13 N) 63.F.
3/c&d



Orig Bk. 980:124

| | | |
|-------|----------|-------|
| A - B | 141° 02' | 96.56 |
| B - C | 81° 32' | 65.74 |
| C - D | 90° 02' | 25.25 |

Approved *[Signature]*
Director of Surveys
2008/11/05

SCALE : 1:1500

Note: Bearings are cassini grid based on solar observations Distances are in metres
This is a true copy of a diagram of two point seven three six seven hectares, originally transferred to Ramnarine Ramlal & Sookbass Ramlal, shewing a portion coloured pink and containing one point six six two nine hectares being the remainder after five (5) previous transfers
In accordance with Regulation 25 (1) of the Land Surveyors' Regulations 1998, I certify that this plan is correct.

Checked by *[Signature]* 6/11/08

Entered on Trinidad & Tobago Land Surveyor 4-11-2008



