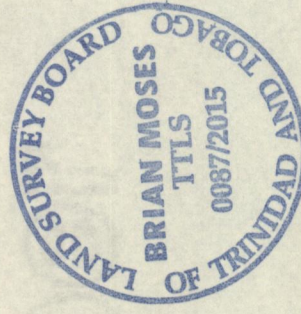


Cadastral Sheet A.15.N. 13D
 2/b
 Ward of Diego Martin
 County of St. George

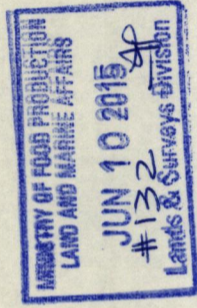
1565



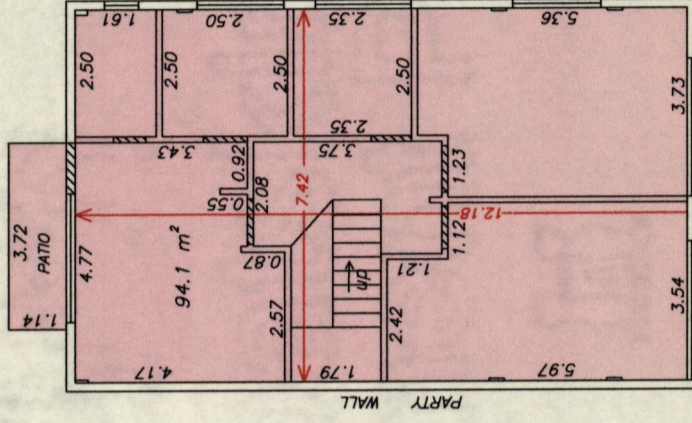
	TYPICAL DOOR
	TYPICAL WINDOW
	INTERNAL WALLS: 0.12 M / 0.18 M
	PARTY WALL 0.18 M
	COMMON AREAS:
	EXTERNAL WALLS: 0.18 M
	(e) SPACE RESERVED FOR ELEVATOR

SCALE 1:150
 Distances are in METRES

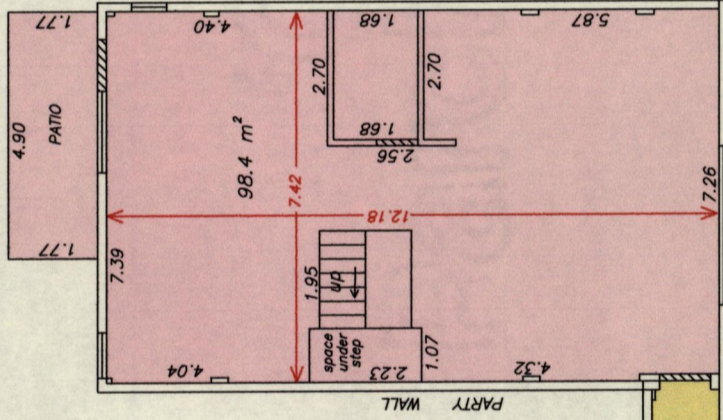
Brian Moses
 Trinidad & Tobago Land Surveyor (T.T.L.S.)
 10th June 2015



SECOND FLOOR
 Apt. 7



FIRST FLOOR
 Apt. 7



CONDOMINIUM SCHEME - Lynch Drive, Maraval

Sheet 3 of 4

INDEX

- Sheet 1 of 4 - General Location Plan
- Sheet 2 of 4 - Individual Location Plan
- Sheet 3 of 4 - Floor Plans Bldg. 2
- Sheet 4 of 4 - Elevation Plans

Process ID # 110451

Floor Plan of a Condominium Scheme coloured pink in the Ward of Diego Martin
 Containing one nine two point five square metres
 Surveyed by me, with due authority, in May, 2015 for L. D. Investments Ltd.
 Certified Correct in accordance with Regulation 25 (1) of the Land Surveyors
 Regulations 1998.

Entered

662