

1565

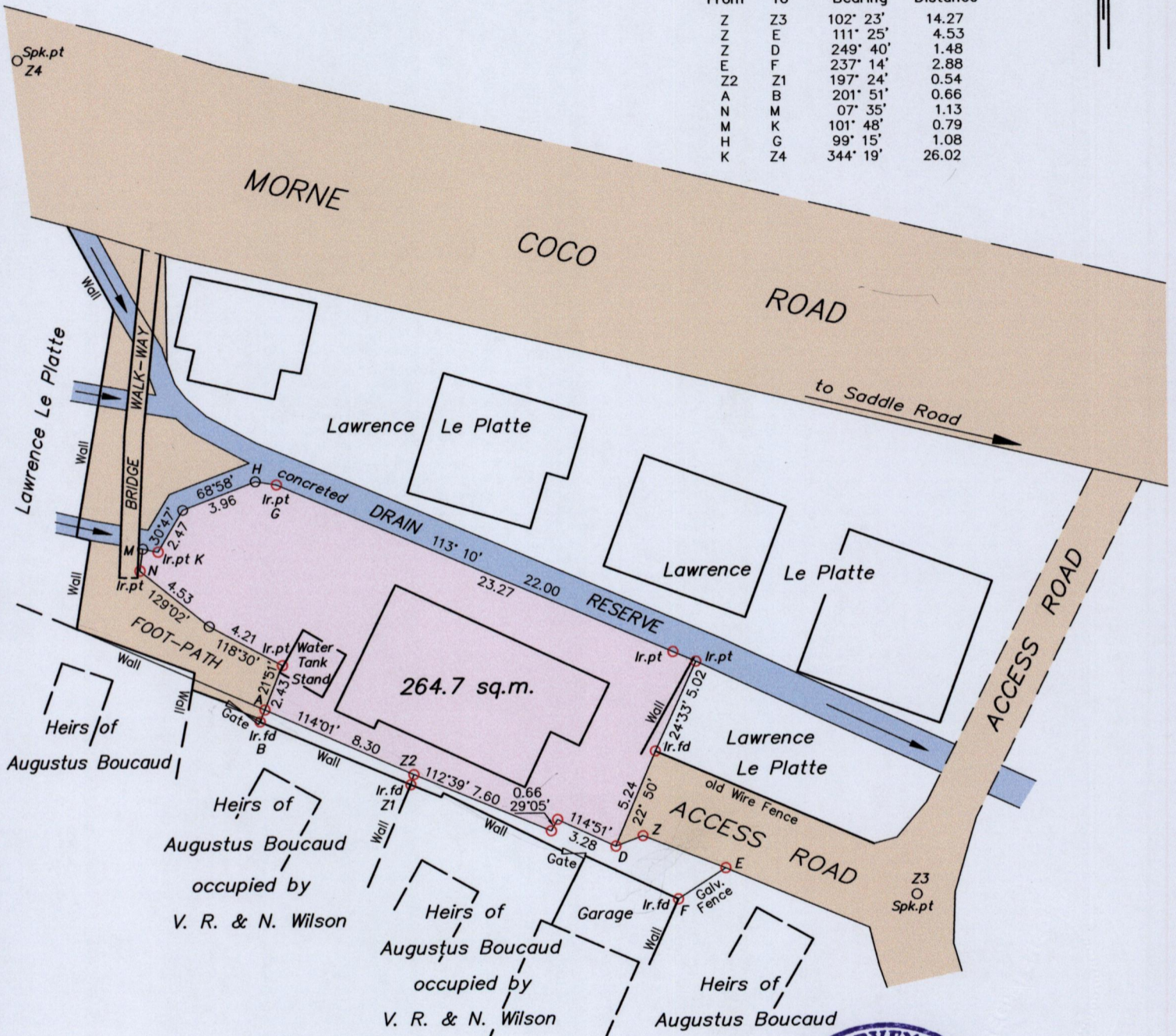
Process SD 110822

43

G N
U.T.M

TRAVERSE NOTES

From	To	Bearing	Distance
Z	Z3	102° 23'	14.27
Z	E	111° 25'	4.53
Z	D	249° 40'	1.48
E	F	237° 14'	2.88
Z2	Z1	197° 24'	0.54
A	B	201° 51'	0.66
N	M	07° 35'	1.13
M	K	101° 48'	0.79
H	G	99° 15'	1.08
K	Z4	344° 19'	26.02



GPS WGS 84 (Zone 20) reading at Nail found Z

N 1184832 E 661138 Accuracy (+/-3.0m)

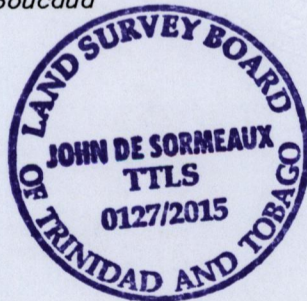
○ Denotes Peg put unless otherwise stated

○ Denotes Nail found unless otherwise stated

SCALE: 1/300

Note: Bearings are based on solar observations Distances are in Metres.

PLAN of a parcel of land coloured pink in the Ward of Diego Martin
 Containing two hundred and sixty four point seven square metres (2,849.2 sq.ft)
 Surveyed by me, with due authority, in June 2015 for Lawrence Le Platte
 Certified correct in accordance with Regulation 25 (1) of the Land Surveyors' Regulations 1998.



Checked by

John de Sormeaux

Entered on

Trinidad & Tobago Land Surveyor

20th July 2015
file path GD: \Le Platte Village 13.06.15B.dwg

