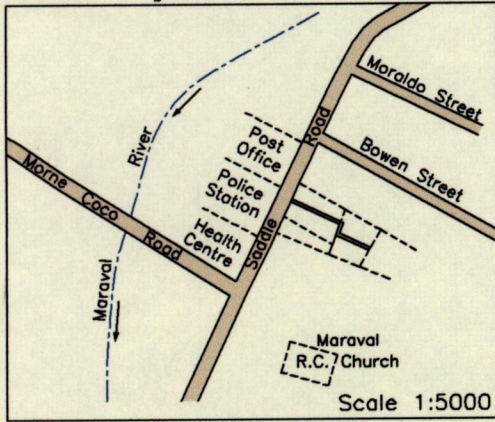


1505

42

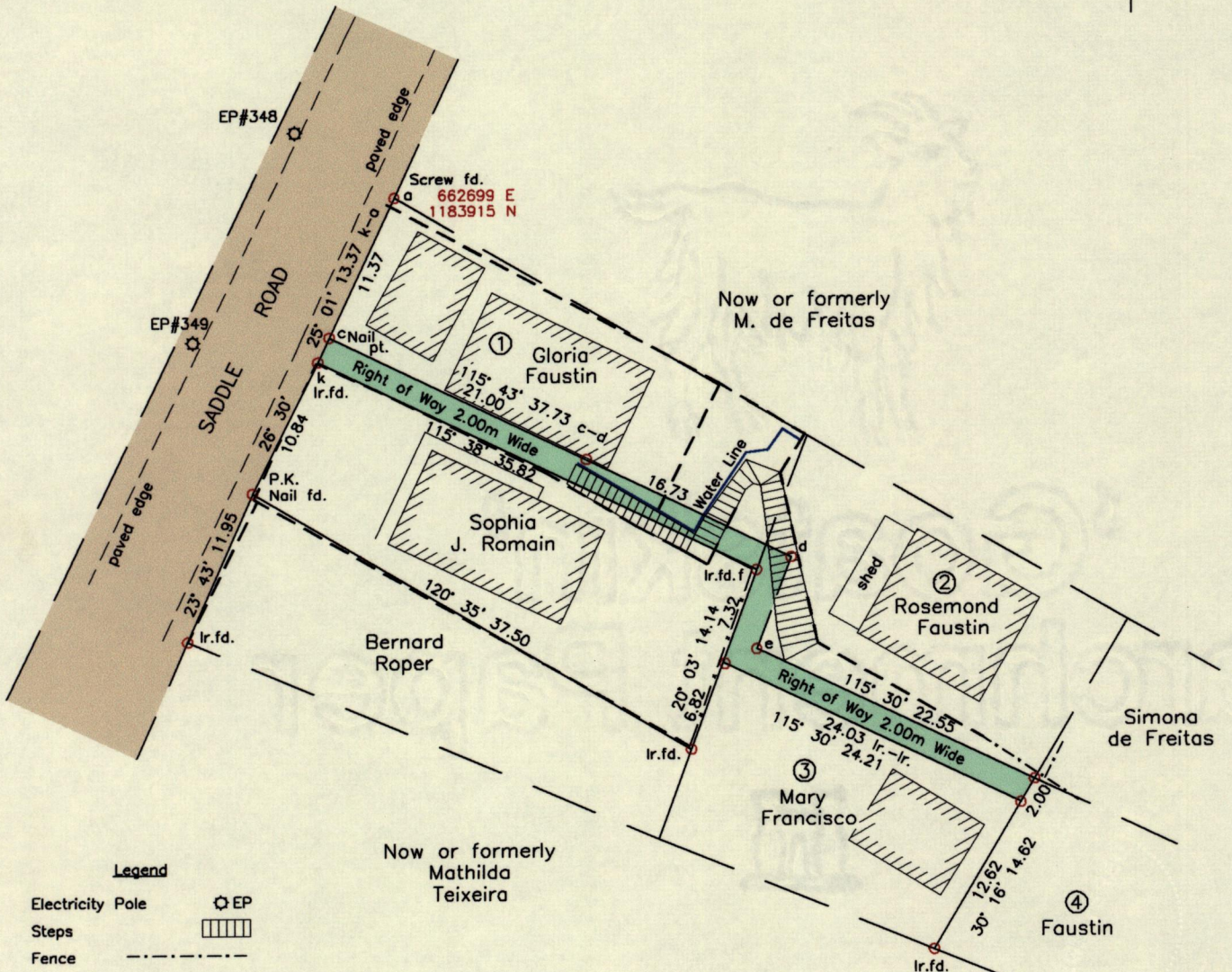
Location Diagram



Maraval

Process ID# 110820

G N
U.T.M.



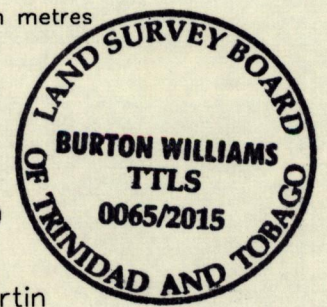
- Legend**
- Electricity Pole
 - Steps
 - Fence
 - Wall

From	To	Bearing	Distance
d	e	200° 36'	7.27

Reference:
Bk.513 Fol.63

SCALE 1:500
Distances are in metres

- Notes: ○ Denotes Ir.pt. unless otherwise stated
Bearings are U.T.M. Grid based on Solar Observations
Previous survey by Winston Sylvester in Sept. 1985
Previous survey by Winston Sylvester in Dec. 2008 for Sophia J. Romain
Coordinates obtained using handheld GPS (UTM Zone 20, Naparima ± 5.0m)



PLAN of a Right Of Way coloured green in the Ward of Diego Martin
Surveyed by me, with due authority, in July 2015 for Rosemond Faustin
Certified Correct in accordance with Regulation 25(1) of the Land Surveyors Regulations 1998.

Checked by *Burton Will*
Entered on Trinidad and Tobago Land Surveyor,

21/7/2015.

