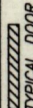
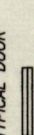
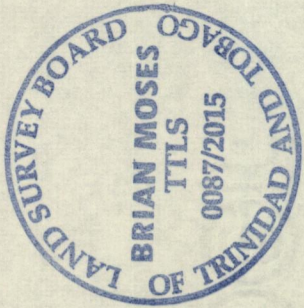


Cadastral Sheet A.15.N. <sup>13D</sup>  
2/b  
Ward of Diego Martin  
County of St. George

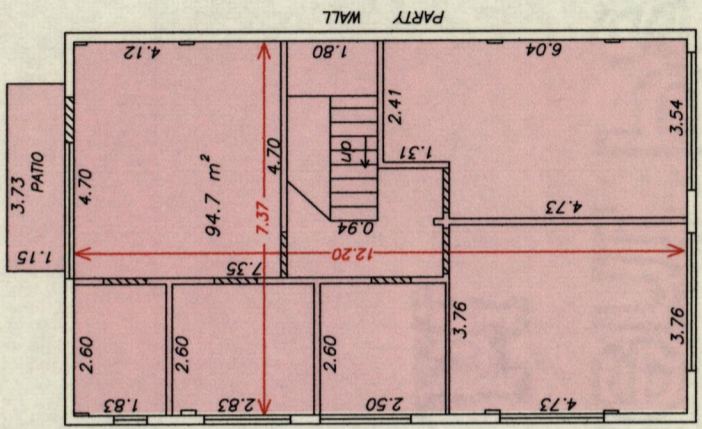
1565

SECOND FLOOR  
Apt. 5

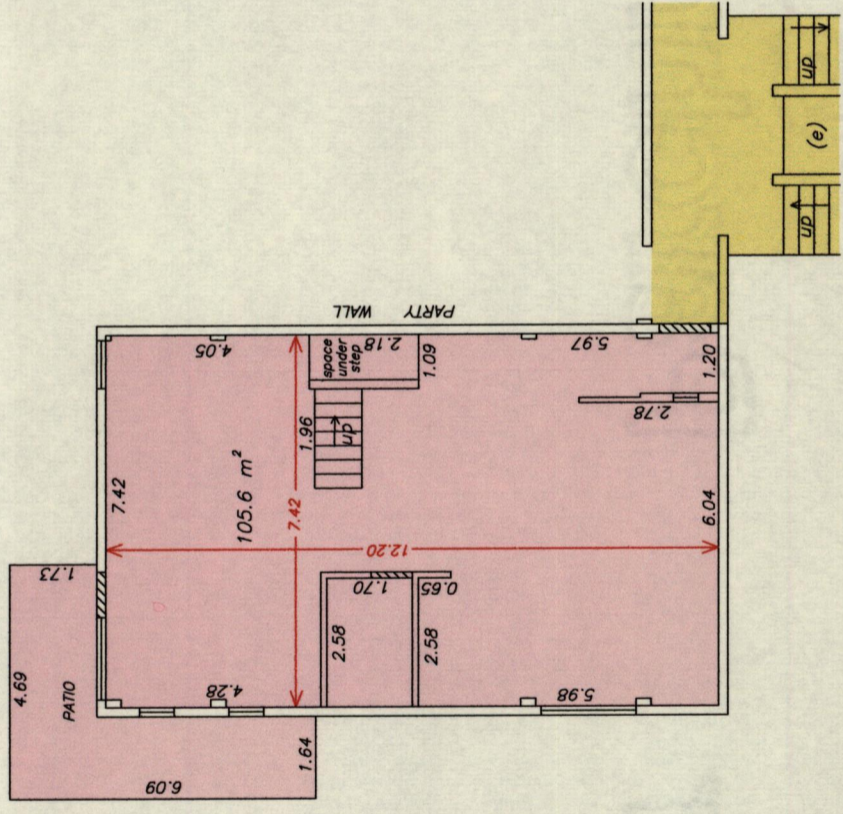
 TYPICAL DOOR  
 TYPICAL WINDOW  
 INTERNAL WALLS:  
 0.12 M / 0.18 M  
 PARTY WALL 0.18 M  
 COMMON AREAS:  
 EXTERNAL WALLS: 0.18 M  
 (e) SPACE RESERVED FOR ELEVATOR



SCALE 1:150  
Distances are in METRES



FIRST FLOOR  
Apt. 5



CONDOMINIUM SCHEME - Lynch Drive, Maraval

Sheet 3 of 4

INDEX

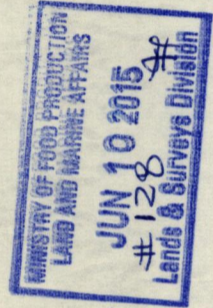
- Sheet 1 of 4 - General Location Plan
- Sheet 2 of 4 - Individual Location Plan
- Sheet 3 of 4 - Floor Plans Bldg. 2
- Sheet 4 of 4 - Elevation Plans

Process DA110427

Floor Plan of a Condominium Scheme coloured pink in the Ward of Diego Martin  
Containing two zero zero point three square metres  
Surveyed by me, with due authority, in May, 2015 for L. D. Investments Ltd.  
Certified Correct in accordance with Regulation 25 (1) of the Land Surveyors  
Regulations 1998.

Entered

668



Brian Moses  
 Trinidad & Tobago Land Surveyor (T.T.L.S.)  
 10th June 2015

4