

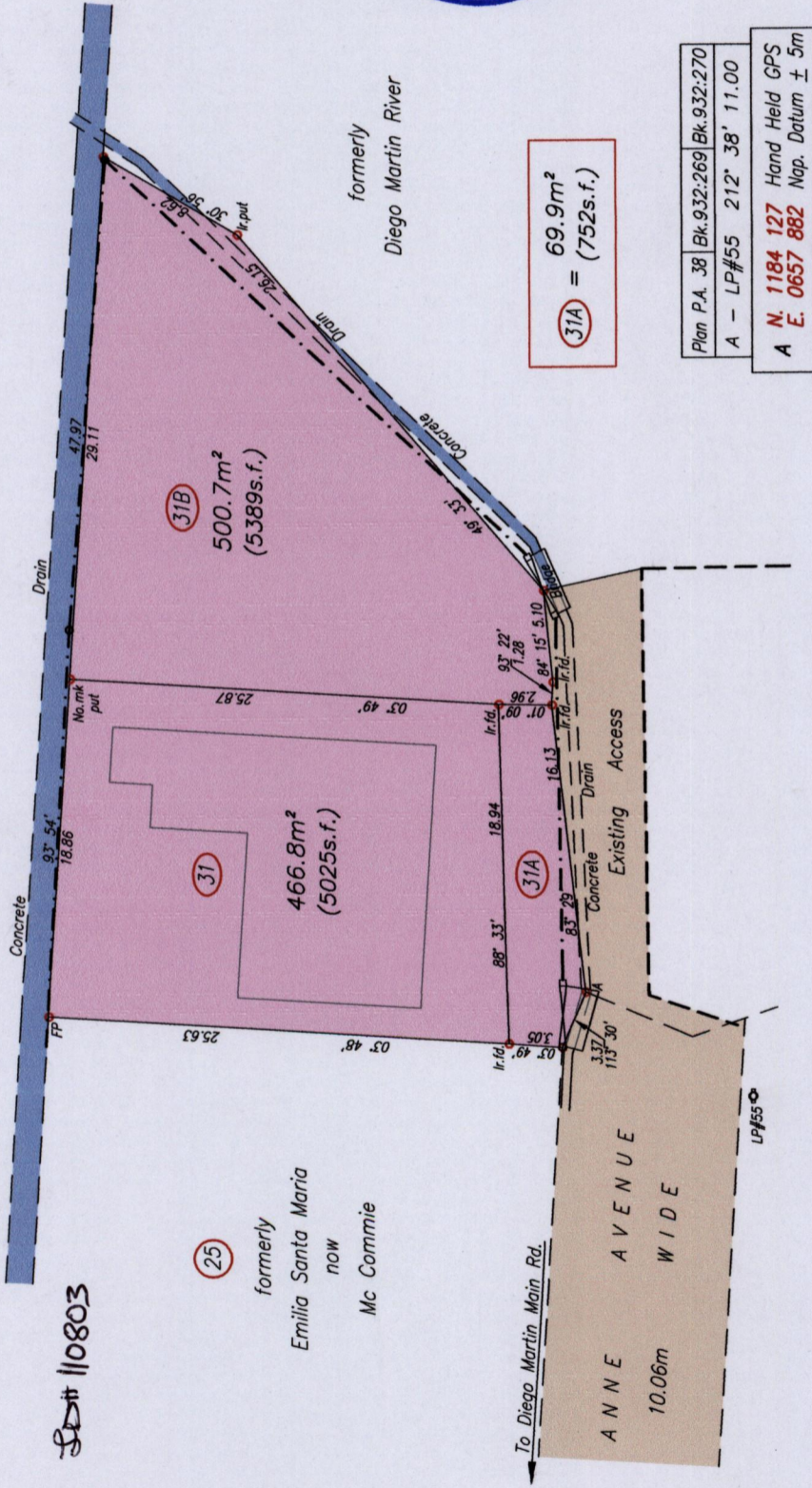
Anne Avenue,

Diego Martin

Process ~~SD#~~ 110803

(25)

formerly
Emilia Santa Maria
now
Mc Commie



(31A) = 69.9m²
(752s.f.)

Plan P.A. 38	Bk. 932:269	Bk. 932:270
A - LP#55	212° 38'	11.00
A N. 1184 127	Hand Held GPS	
A E. 0657 882	Nap. Datum ± 5m	



--- Wall
- - - - - Wire Fence

SCALE 1/400

Distances are in metres

○ Denotes Nail Put unless otherwise stated
Bearings are Cassini Grid based on Solar Observations
PLAN of 3 Parcels of land coloured pink in the Ward of Diego Martin
Containing together one zero three seven point four square metres
Surveyed by me, with due authority, in June 2015 for Kristi Holding Limited
Certified Correct In accordance with Regulation 25 (1) of the Land Surveyors' Regulations 1998,



Entered On.....

Nasser Abdul
9th July

Trinidad & Tobago Land Surveyor2015

1565

37