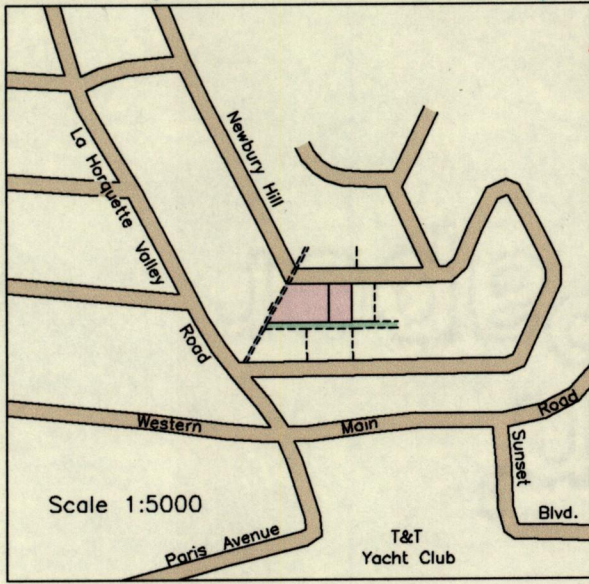


Location Diagram



1565

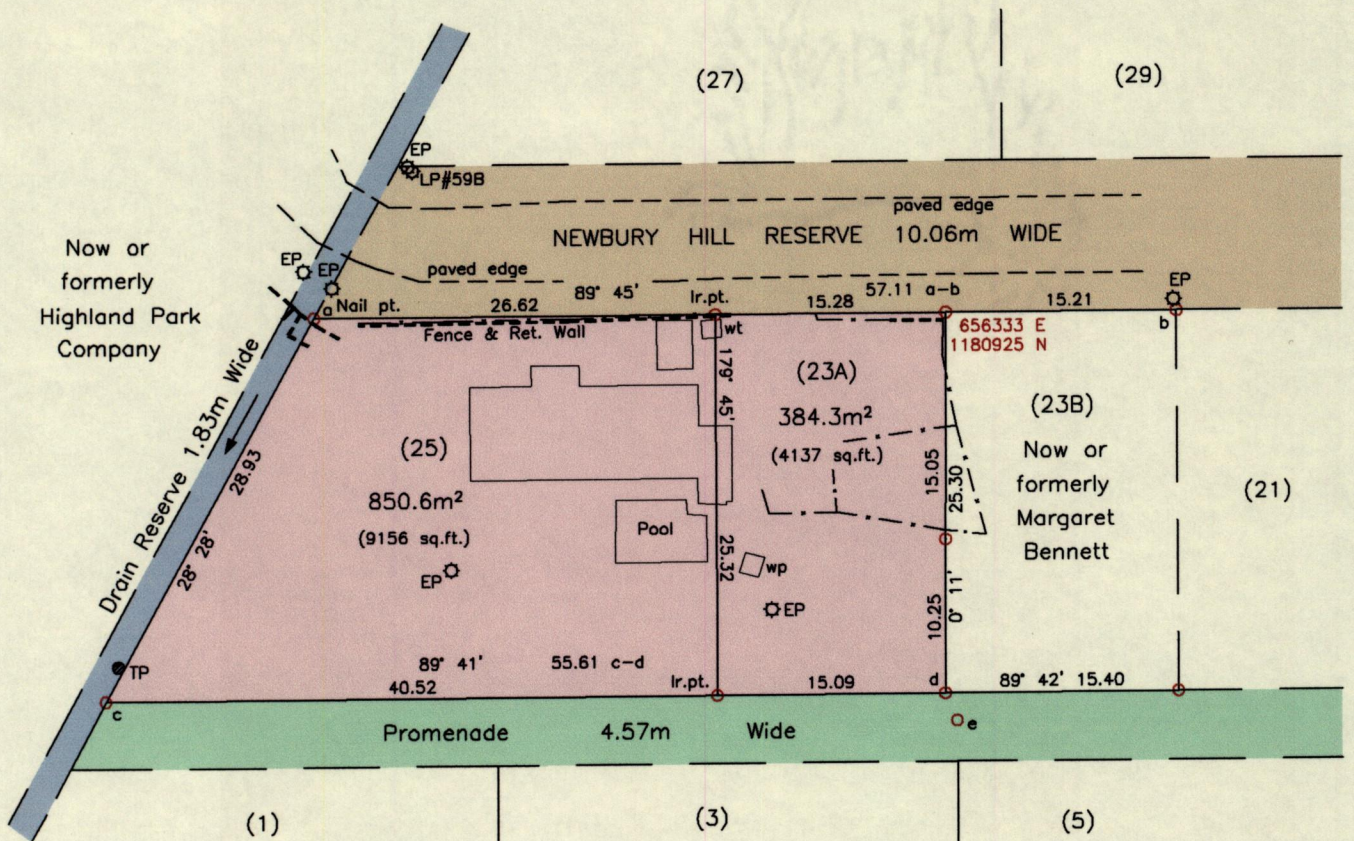
Cadastral Sheet 12F 2/d A.19.C. 21

Ward of Diego Martin
County of St. George

Lazzari Lands

Glencoe

Process ID# 110531



Legend

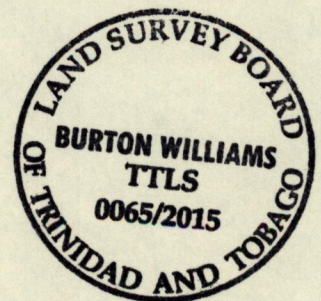
From	To	Bearing	Distance
d	e	156° 37'	1.97

- Lightpole/Electricity Pole ◉ LP/EP
- Telephone Pole ● TP
- Water Tank wt
- Water Pump wp
- Fence - - - - -
- Wall/ Retaining Wall - - - - -

SCALE 1:500
Distances are in metres

Reference:
PLAN C.K.68

- Notes: ○ Denotes Ir.f.d. unless otherwise stated
Bearings are U.T.M. Grid based on Solar Observations
Previous survey of Lot 23B by Murchison Pierre in March 2008
Coordinates obtained using handheld GPS (UTM Zone 20, Naparima ± 5.0m)



PLAN of 2 parcels of land coloured pink in the Ward of Diego Martin
Containing together one thousand two hundred and thirty four point nine square metres
Surveyed by me, with due authority, in June 2015 for Dale Maharaj
Certified Correct in accordance with Regulation 25(1) of the Land Surveyors Regulations 1998.

Checked by *Burton Williams*

Entered on Trinidad and Tobago Land Surveyor, 25/6/2015.

