

Amendment To A Previous Survey

Process *SDH 110586*

From	To	Bearing	Distance
k1	h1	225° 07'	3.58
u	f1	173° 23'	4.90
v	w	121° 41'	35.81
w	p	28° 01'	16.21
j	b1	132° 35'	6.22
c1	d1	106° 56'	3.81
d1	e1	102° 52'	1.11

Legend

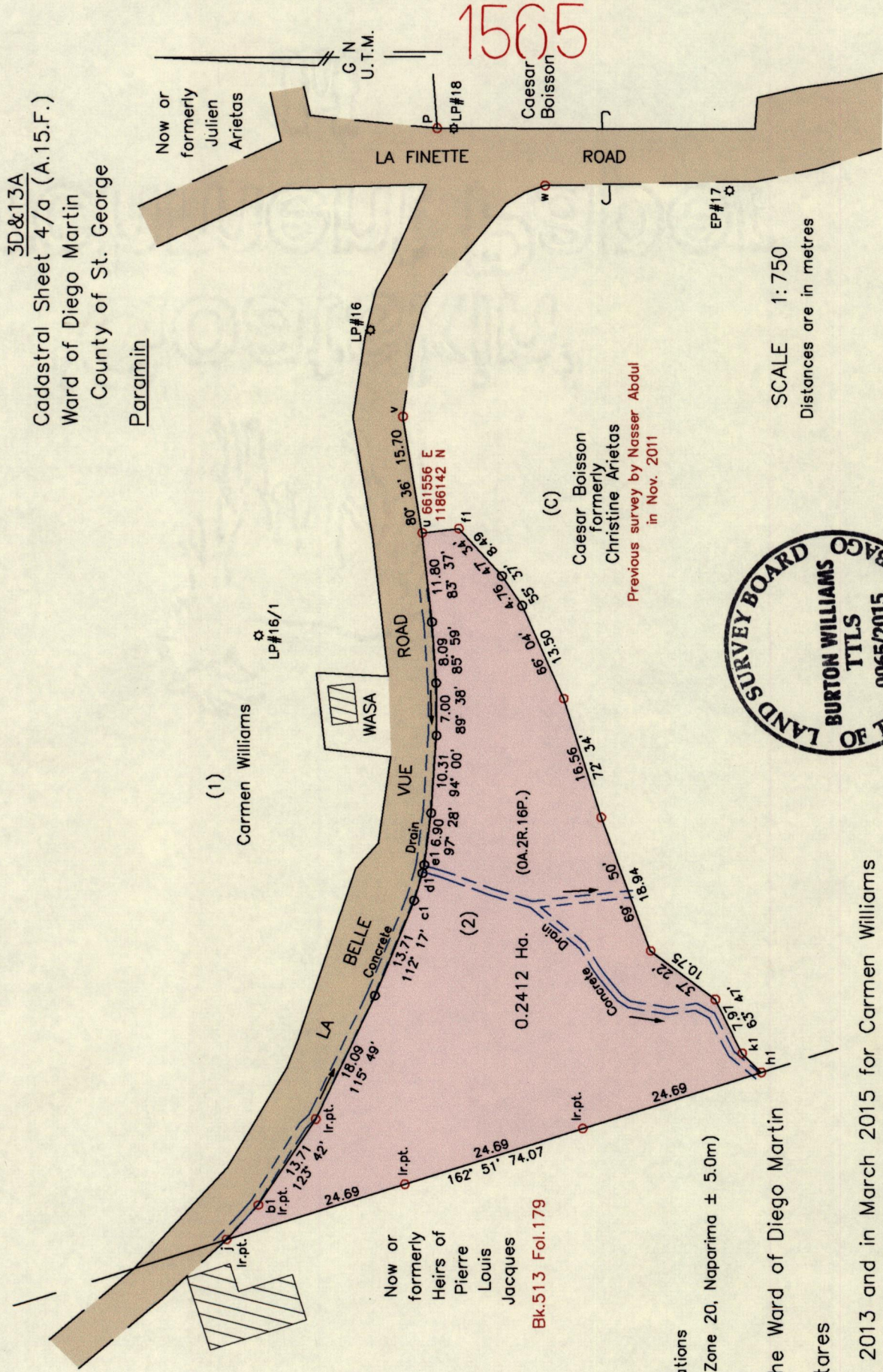
Lightpole \odot LP
 WASA Sub Station \square WASA

- Notes: \circ Denotes Ir.f.d. unless otherwise stated
- \odot Denotes No Mark put
- Bearings are U.T.M. Grid based on Solar Observations
- Coordinates obtained using handheld GPS (UTM Zone 20, Naparima \pm 5.0m)

PLAN of a parcel of land coloured pink in the Ward of Diego Martin
 Containing zero point two four one two hectares

Surveyed by me, with due authority, in April 2013 and in March 2015 for Carmen Williams
 Certified Correct in accordance with Regulation 25(1) of the Land Surveyors Regulations 1998.

Checked by *Burton Williams*
 Entered on 22/6/2015
 Trinidad and Tobago Land Surveyor,.....



SCALE 1:750
 Distances are in metres

3D&13A
 Cadastral Sheet 4/a (A.15.F.)
 Ward of Diego Martin
 County of St. George
Paramin

19

G292013C1.DWG