

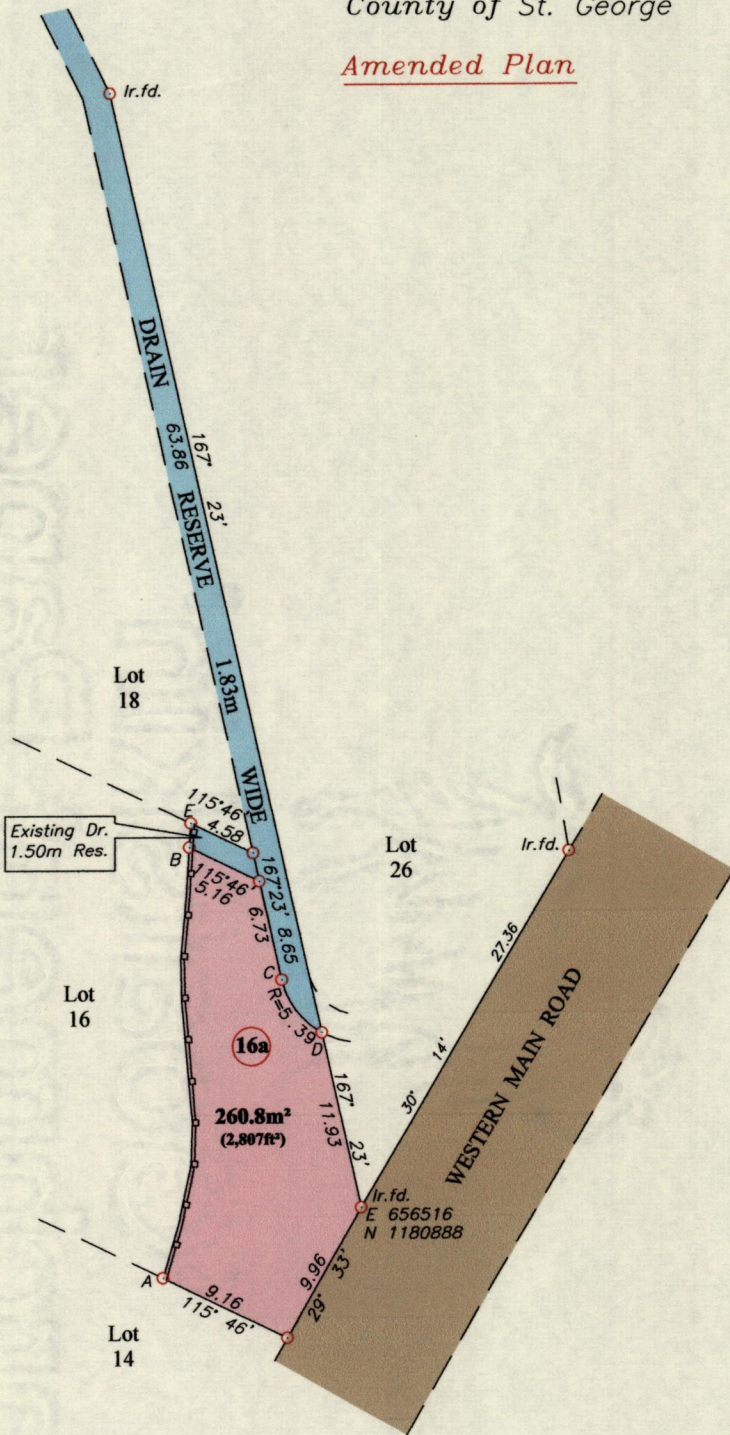
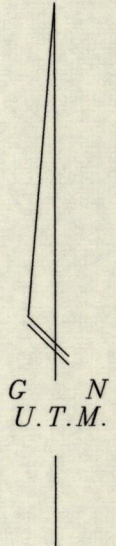
Process ID#110415

Ward of Diego Martin

County of St. George

Amended Plan

E	
30.30	
28.68	B Ir.pt.
25.48	
0.10	
21.21	
19.93	
18.38	0.13
15.09	0.62
10.58	1.29
7.65	1.40
3.68	0.82
0	
A	3' 34'



—○—○—○— Wall

○ Denotes boundary corner unless otherwise stated
 Co-ordinates are U.T.M. Zone 20N Naparima Datum +/-5m
 obtained from a handheld GPS
 Bearings are U.T.M. grid based on solar observations

C - D 142° 49' 4.40

Vide Plans D.I.25
C.K.68

SCALE 1/500

Distances are in metres

PLAN of a Parcel of land coloured pink in the Ward of Diego Martin
 Containing two six zero point eight square metres

Surveyed by me, with due authority, in May 2015 for George Laquis II

Certified Correct in accordance with Regulation 25 (1) of the
 Land Surveyors Regulations 1998

Checked by.....

Entered..... Trinidad & Tobago Land Surveyor..... 12th June 2015

MINISTRY OF FOOD PRODUCTION
 LAND AND MARINE AFFAIRS
 JUN 12 2015
 #172
 Lands & Surveys Division

[Handwritten Signature]
 12th June 2015