

1564

Cadastral Sheet I.19.B. 84

AMENDED PLAN

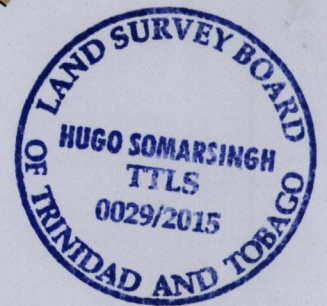
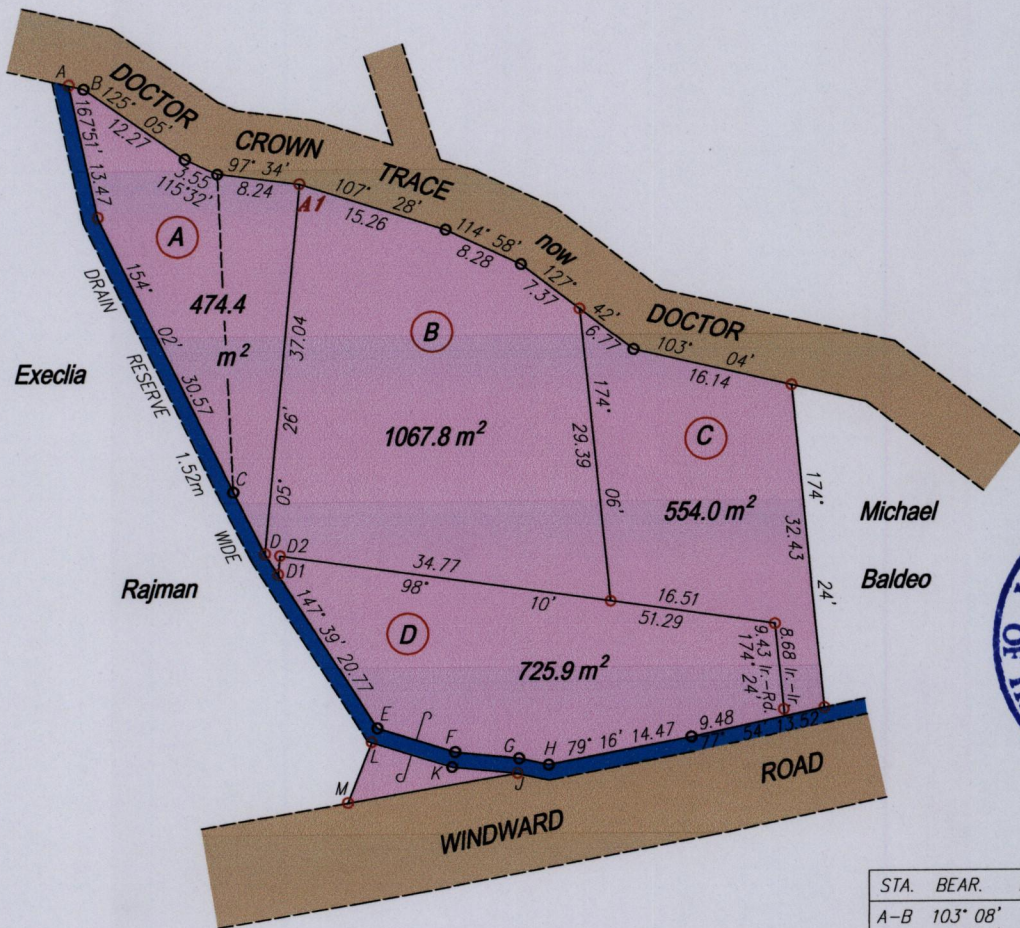
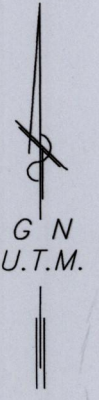
Ward of Tobago.

Process SP#110018

Parish of St. Mary

GOLDBOROUGH ESTATE

Bk.1073 fol.73



STA.	BEAR.	DIST.
A-B	103° 08'	1.52
C-D	153° 08'	6.98
D-D1	147° 39'	2.45
D1-D2	05° 26'	1.87
E-F	107° 20'	8.14
F-G	96° 05'	6.41
G-H	102° 28'	3.02
J-K	276° 05'	6.56
K-L	287° 20'	8.85
L-M	201° 29'	6.47
E-L	201° 29'	1.52

A1= N - 1234723  
E - 0739663

Coordinates obtained by hand held G.P.S.  
U.T.M. Zone 20 WGS84 (+/-) 5m

SCALE 1:750  
Distances are in METRES

- Denotes Iron put unless otherwise stated
- Bearings are Cassini Grid based on Solar observations
- To obtain compass bearings subtract/add minutes.

PLAN of 4 Parcels of land coloured pink in the Ward of Tobago.  
Containing together zero point two eight two two hectares.  
Surveyed by me, with due authority, in February, 2015 for Len Frederick.  
Certified correct in accordance with Regulation 25 (1) of the  
Land Surveyors' Regulations 1998,

Entered Hugo Somarsingh T.T.L.S.  
Trinidad & Tobago Land Surveyor 15th May 2015

