

1564

7

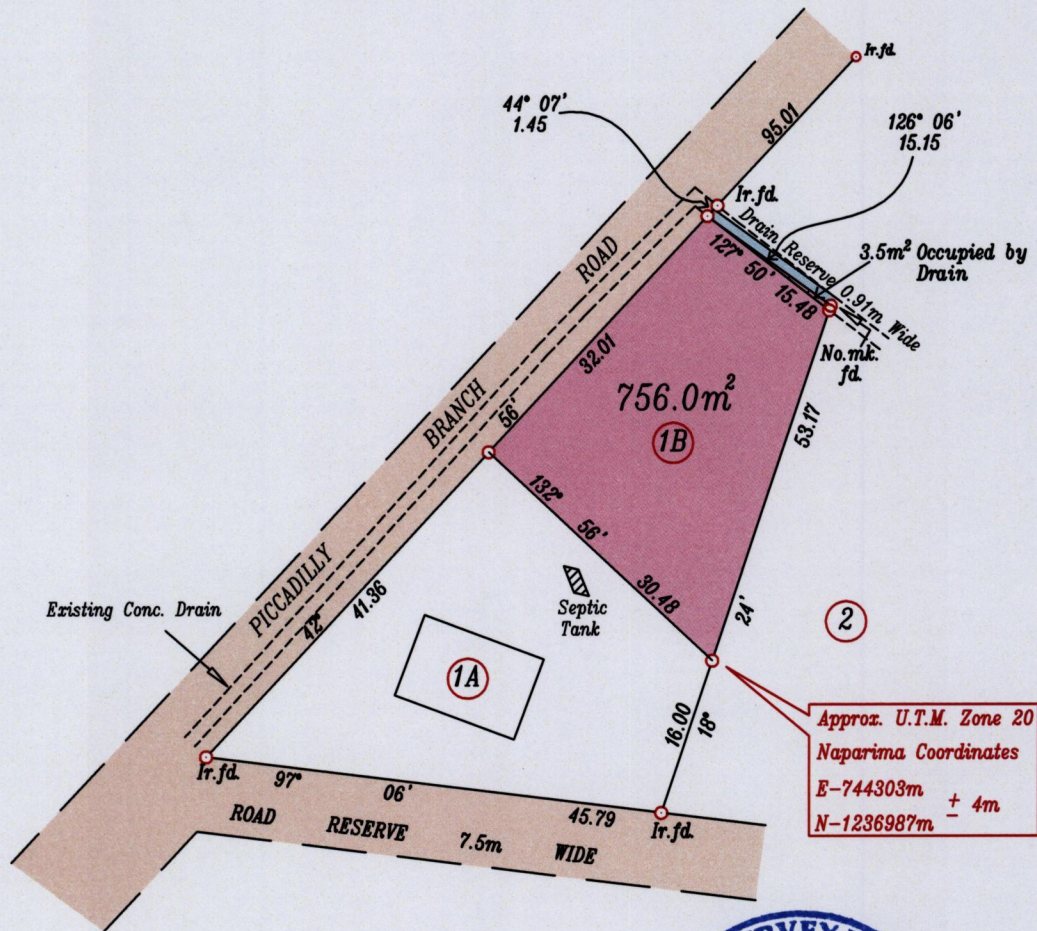
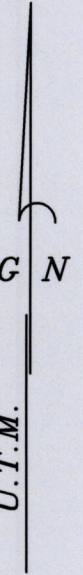
Process S2#109328

Cadastral Sheet I.17.J 1F/6/a

Ward of Tobago

Parish of St. Andrew

SIGNAL HILL



Coordinates obtained from hand held G.P.S. receiver

Bearings are grid based on solar observations

SCALE 1:750

o denotes iron put except otherwise stated

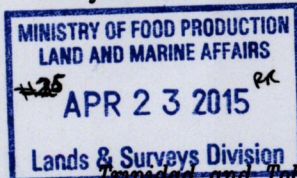
Distances are in metres

Plan of a Parcel of land coloured pink in the Ward of Tobago.

Containing Seven Hundred and Fifty Six Point Zero Square Metres.

Surveyed by me with due authority, on January 22nd, 2015 for Jason Adams and others.

Certified correct in accordance with Regulation 25(I) of the Land Surveyors' Regulations 1998.



*Jefferson Laptiste*

Trinidad and Tobago Land Surveyor

*April 22nd,*

2015

Entered