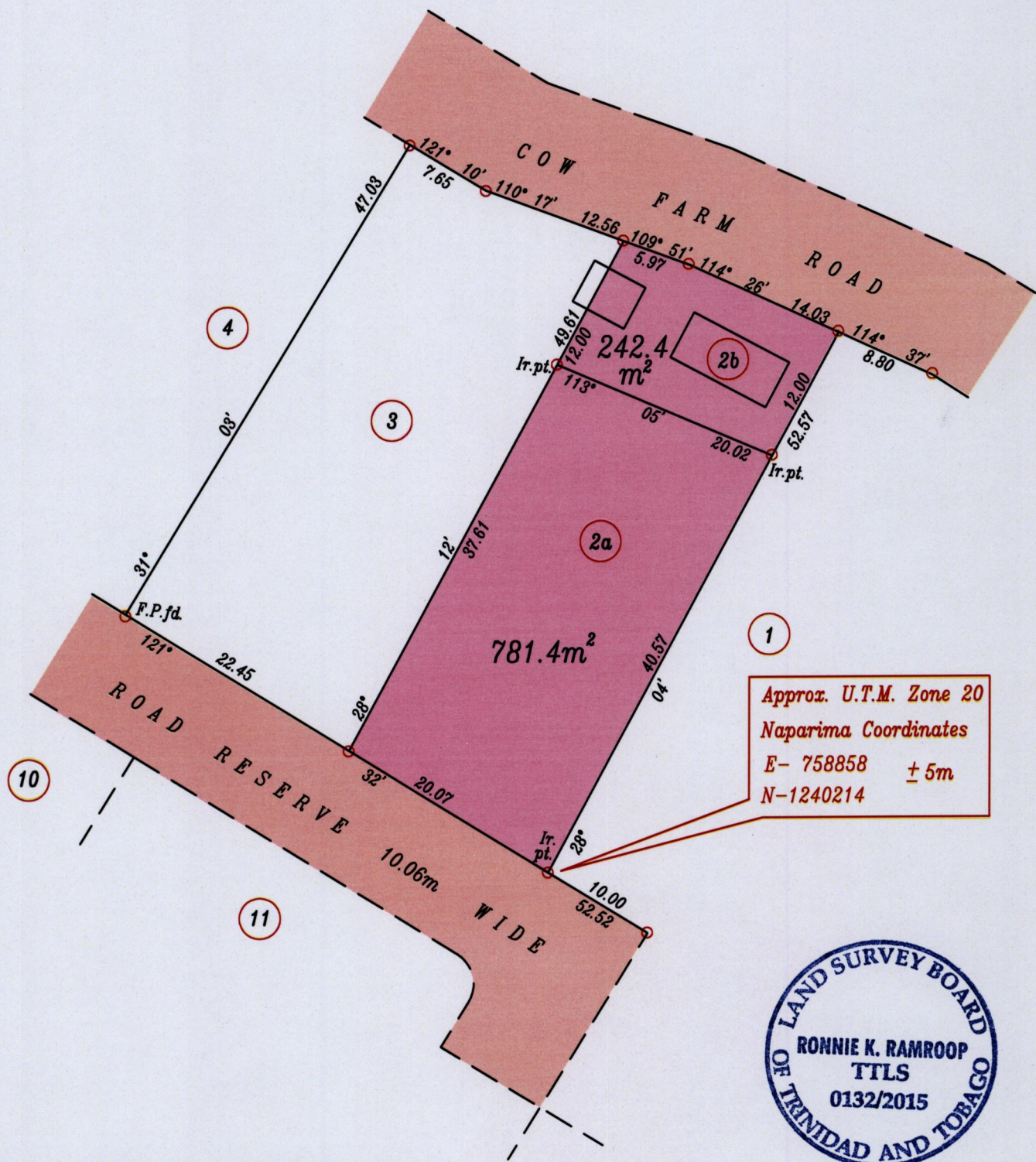
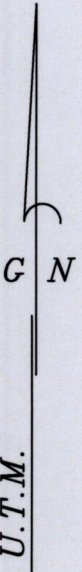


Process ID #109816

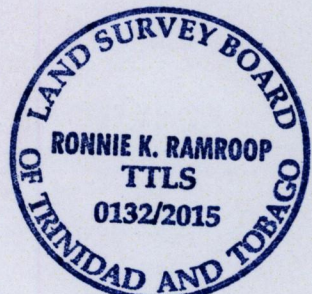
1564

Cadastral Sheet I.19
Ward of Tobago 61
Parish of St. Mary

GOLDSBOROUGH



Approx. U.T.M. Zone 20
Naparima Coordinates
E- 758858 ± 5m
N-1240214



Coordinates obtained from hand held GPS receiver

Bearings are grid based on solar observations

o denotes iron found except otherwise stated

Plan of Two Parcels of land coloured pink in the Ward of Tobago.

Containing together one thousand and twenty three point eight square metres.

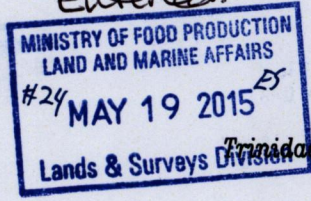
Surveyed by me with due authority, in March 2015 for the Tobago House of Assembly.

Certified correct in accordance with Regulation 25(I) of the Land Surveyors' Regulations 1998.

SCALE 1:500

Distances are in metres

Entered:



Ramroop

Trinidad and Tobago Land Surveyor 19th May 2015