

1564

59

U.P.I.N. No.

Cadastral Sheet $\frac{2J}{2/b}$, I.19.B.

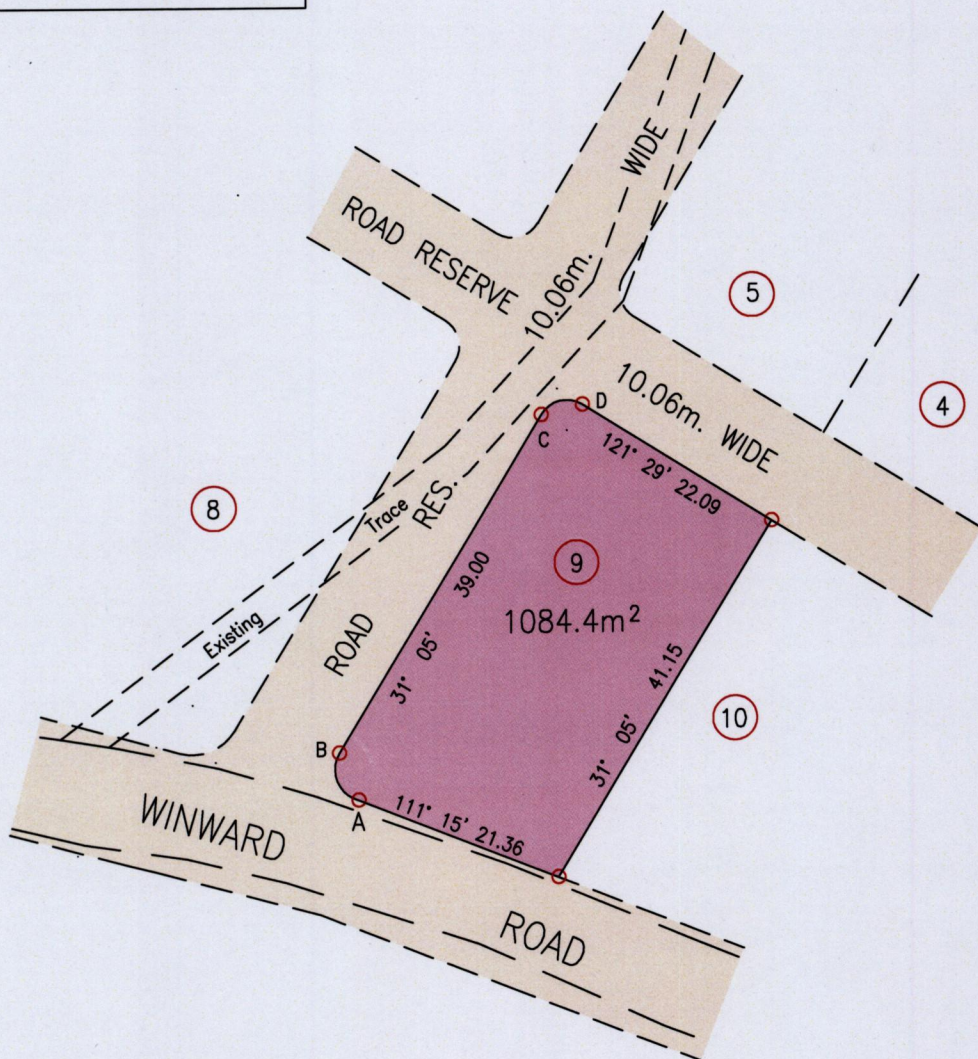
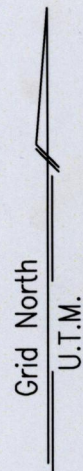
Process ID-1109810

Ward of Tobago

"COMMERCIAL PARK, GOLDSBOROUGH"

Parish of St. Mary

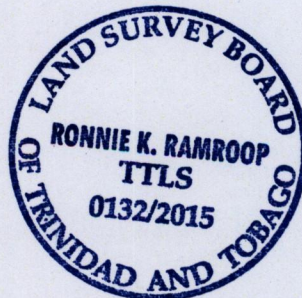
LINE	BEARING	DIST.
A - B	337° 28'	5.02
C - D	76° 16'	4.23



A	E	758752.80
	N	1240217.24

Reliability Error \pm 5.0 m.

Coordinates are U.T.M. Zone 20, Naparima 1955
Obtained from Handheld GPS Receiver



SCALE 1:750
Distances are in Metres

Bearings are U.T.M. Zone 20 Grid based on Solar Obs.

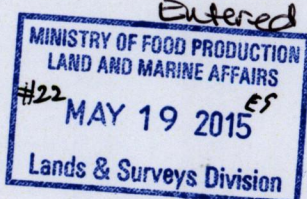
○ Denotes Iron Put unless otherwise stated

Plan of a Parcel of land coloured pink in the Ward of Tobago

Containing one thousand and eighty four point four square metres

Surveyed by me, with due authority, in January 2015 for The Tobago House of Assembly

Certified correct in accordance with Regulation 25(1) of the Land Surveyors Regulations 1998.



[Handwritten Signature]

Trinidad & Tobago Land Surveyor19th May..... 2015