

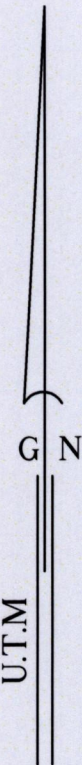
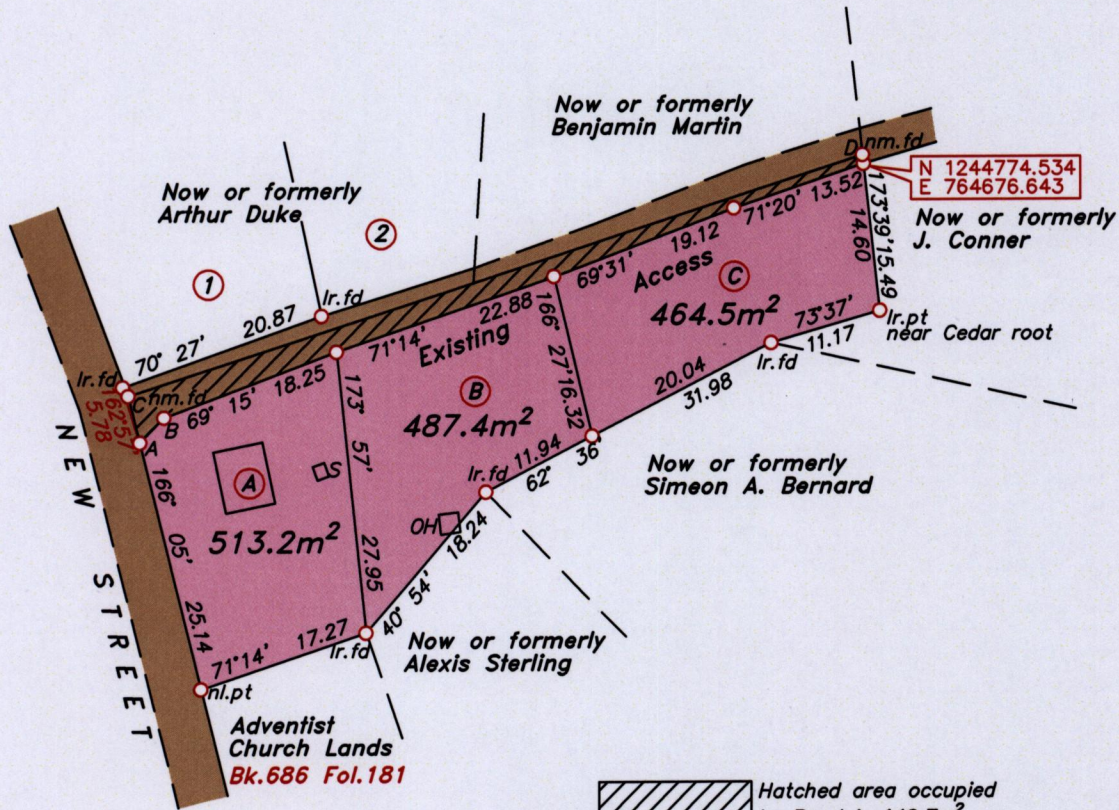
1564

1832

U.P.R.N.....

Process *SDH* 111395

Cadastral Sheet 1.15.E $\frac{3A}{2/b/2}$
Ward of Tobago
Parish of St. Paul
ROXBOROUGH



Hatched area occupied by Road is 149.7m²

OH-Out House
S-Shower

LEGEND		
LINE	BEARING	DISTANCE
A-B	43°53'	3.44
C-D	72°06'	76.60
C-A	166°05'	4.80



Note- UTM Zone 20 (WGS 84) Coordinates obtained from hand held GPS receiver
± 5.00m

○ Denotes iron put, except otherwise stated.

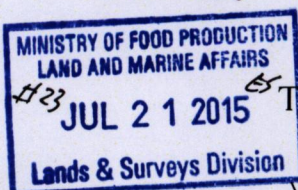
Bearings are U.T.M grid based on solar observations

Distances are in metres

PLAN of 3 parcels of land coloured pink in the Ward of Tobago Containing together one thousand four hundred and sixty five point one square metres. Surveyed by me, with due authority on 12th June 2015 at the request of Ann Williams Certified Correct in accordance with Regulation 25 (1) of the Land Surveyors Regulations 1998.

SCALE 1:500

Entered



Trinidad & Tobago Land Surveyor..... *L. Thomas* 14th July 2015.