

STUDLEY PARK

1564

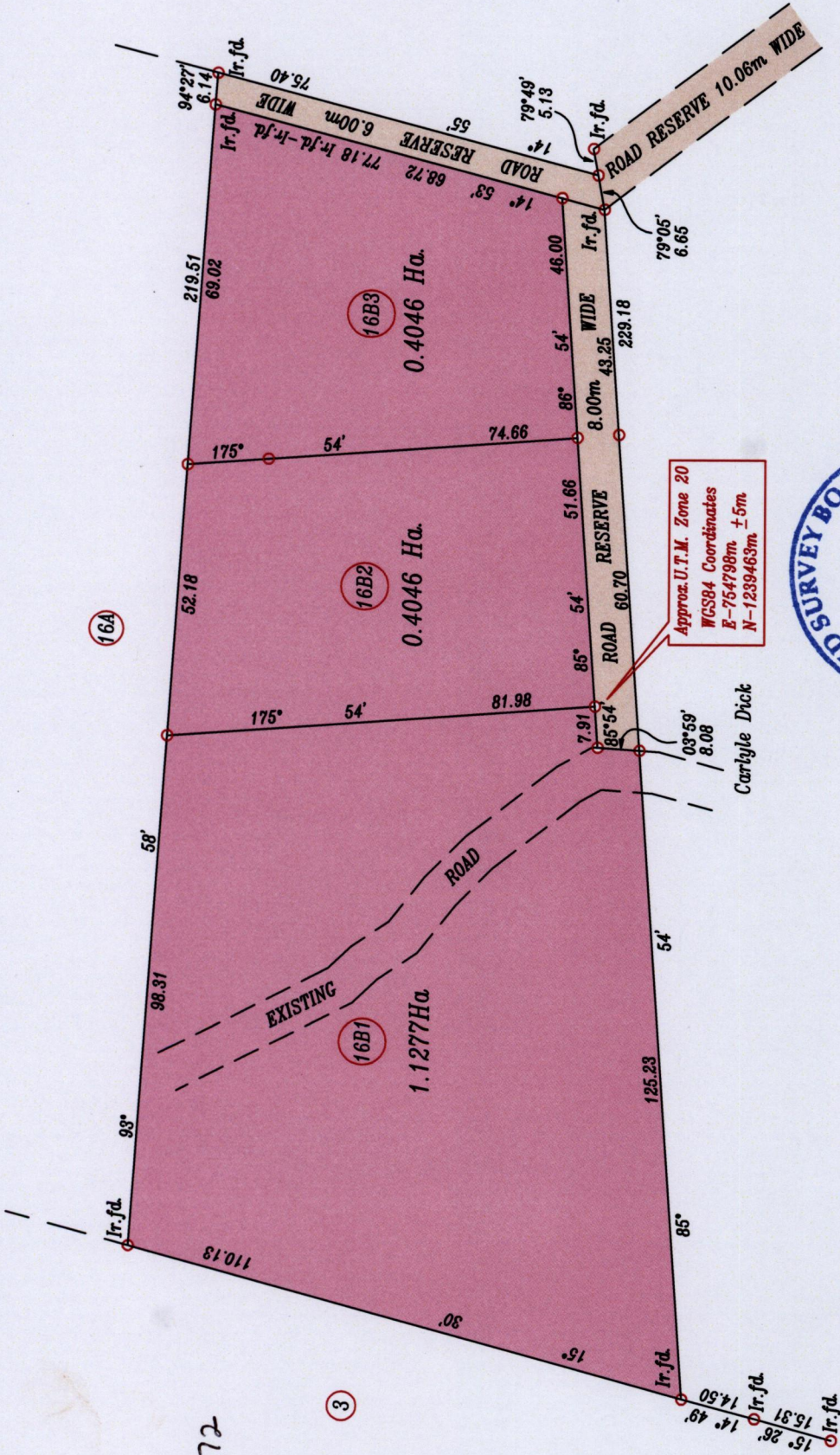
U.T.M.

G N

SCALE 1:1250

Distances are in metres

177



Bearings are grid based on solar observations

○ denotes iron put except otherwise stated

Plan of Three Parcels of land coloured pink in the Ward of Tobago.

Containing together One Point Nine Three Six Nine Hectares.

Surveyed by me with due authority, in March and April, 2015 for Jerome Smart.

Certified correct in accordance with Regulation 25(1) of the Land Surveyors' Regulations 1998.

Entered

Jefferson Laptiste

July 14th 2015

Trinidad and Tobago Land Surveyor

MINISTRY OF FOOD PRODUCTION
LAND AND MARINE AFFAIRS
#16 JUL 15 2015
Lands & Surveys Division