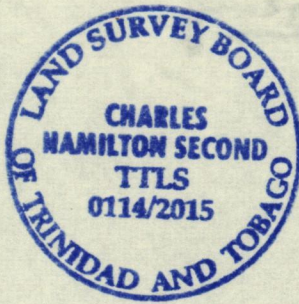


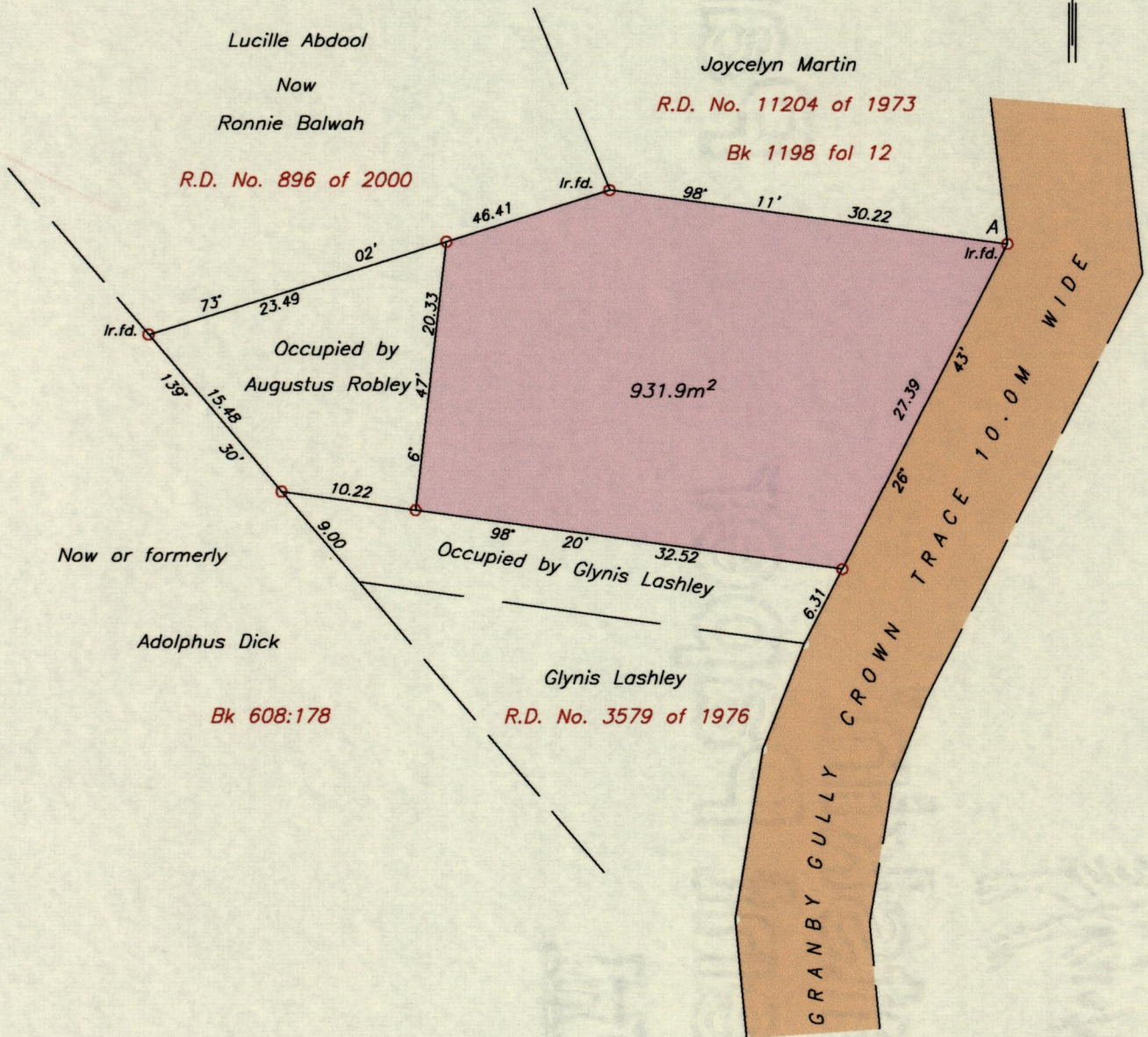
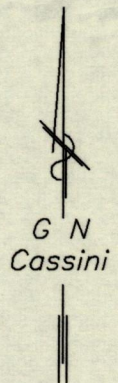
1564

173

Process JDH 111362
R.D. No. 2036 of 2000



Cadastral Sheet 1.19.E. 2/c/1
Ward of Tobago
Parish of St. Mary
Goodwood



A = N 1239448
E = 757851 +/- 5.0m
UTM Zone 20 Naparima 1955 Datum
Hand Held GPS

MINISTRY OF FOOD PRODUCTION
LAND AND MARINE AFFAIRS
4/12 JUL 14 2015 ES
Lands & Surveys Division

To obtain Cassini bearings add 27 minutes
o Denotes Iron put except where otherwise stated
Bearings are U.T.M. Grid based on solar observations

SCALE 1:500
Distances are in METRES

PLAN of a Parcel of land coloured pink in the Ward of Tobago
Containing nine hundred and thirty one point nine square metres
Surveyed by me, with due authority, in September 2007 at the request of Augustus Robley
Certified correct in accordance with Regulation 25 (1) of the Land Surveyors' Regulations 1998,

Charles H. Seaw T.T.L.S.

Entered on Trinidad & Tobago 25th June 2015
Land Surveyor