

1564

170

Process ID# 111357
U.P.I.N. No.

Cadastral Sheet $\frac{1E}{6/a/4}$, I.21.B.

"Mora Avenue, Milford Court, Bon Accord"

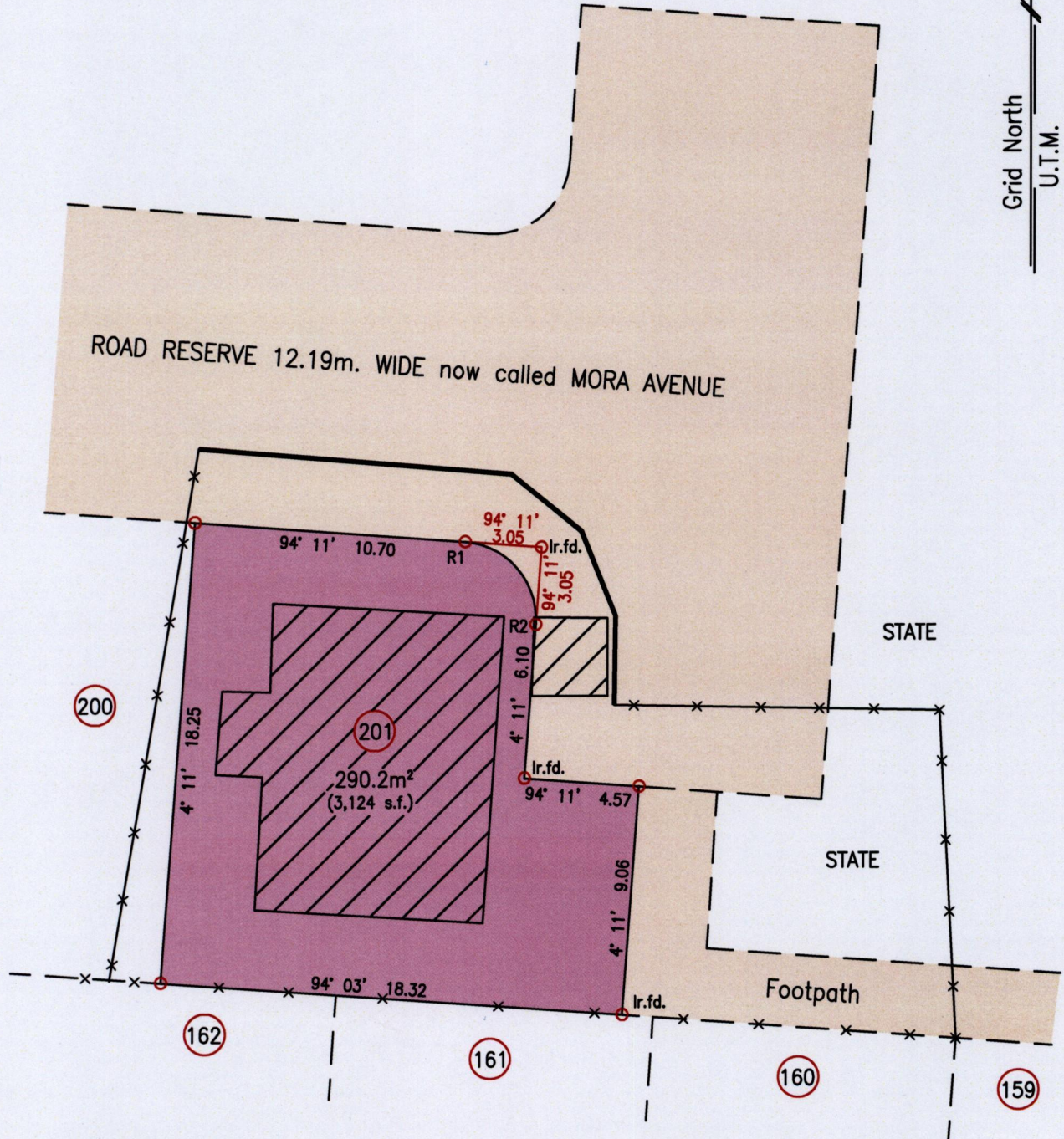
Ward of Tobago

Parish of St. Patrick

CHORD	BEARING	DIST.	RADIUS	SEG. AREA
R1-R2	139° 11'	4.31	3.05	2.7m ²

Vide Plan A.M.53
Plan J.P.165

Grid North
U.T.M.



R1	E 738024
	N 1234256

Reliability Error \pm 5.0 m.

Coordinates are U.T.M. Zone 20, Naparima 1955
Obtained from Handheld GPS Receiver

Bearings are U.T.M. Zone 20 Grid based on Solar Obs.

○ Denotes Iron put unless otherwise stated

Plan of a Parcel of land coloured pink in the Ward of Tobago

Containing two hundred and ninety point two square metres

Prepared by me, with due authority, in July 2015 at the request of

The Division of Settlements and Labour, Tobago House of Assembly

In accordance with Regulation 25(1) of the Land Surveyors Regulations 1998,

I certify that this plan is a true representation of the plan filed as J.P.165

Entered

MINISTRY OF FOOD PRODUCTION
LAND AND MARINE AFFAIRS

#8 JUL 09 2015

Lands & Surveys Division

[Signature]

Trinidad & Tobago Land Surveyor 8th July 2015

SCALE 1:250

Distances are in Metres

—x—x—x— Denotes chain link wire fence

———— Denotes Concrete Brick Wall

