

1564'

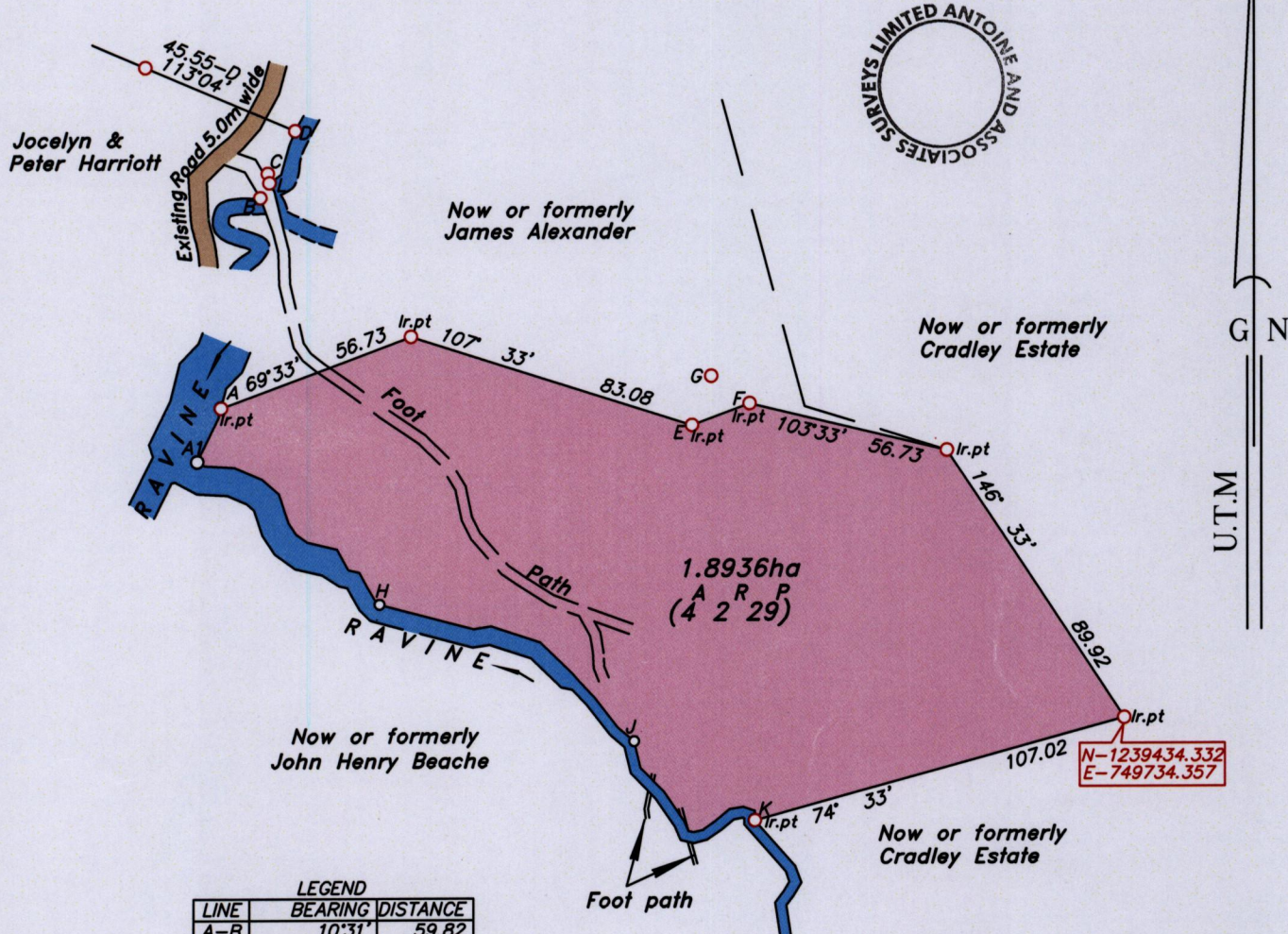
154

U.P.R.N.....

Cadastral Sheet I.17.D & I.18.E ^{2G}/_{2/d/4}
Ward of Tobago
Parish of St. George
CRADLEY

Process ID# 111319

See Plan C.J 46



LEGEND

LINE	BEARING	DISTANCE
A-B	10°31'	59.82
B-L	31°04'	4.92
L-D	26°10'	16.38
C-L	170°29'	2.71
E-F	69°33'	17.30
G-F	125°29'	13.25

LEGEND

LINE	BEARING	DISTANCE
A-A1	23°53'	16.39
A1-H	128°18'	64.95
H-J	118°08'	81.38
J-K	123°19'	40.75



N-1239434.332
E-749734.357

Note- UTM Zone 20 (WGS 84) Coordinates obtained from hand held GPS receiver
± 5.00m

- Denotes iron found, except otherwise stated.
- Denotes peg put.

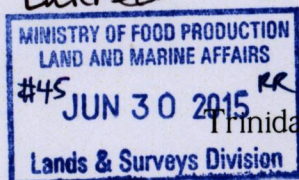
Bearings are U.T.M grid based on solar observations

Distances are in metres

SCALE 1:2000

PLAN of a parcel of land coloured pink in the Ward of Tobago
Containing one point eight nine three six hectares.
Surveyed by me, with due authority on 19th, 20th 21st & 22nd May 2015 for Ivan Beache
Certified Correct in accordance with Regulation 25 (1) of the Land Surveyors Regulations 1998.

Entered:



.....
L. Beache
 30th June2015.

