

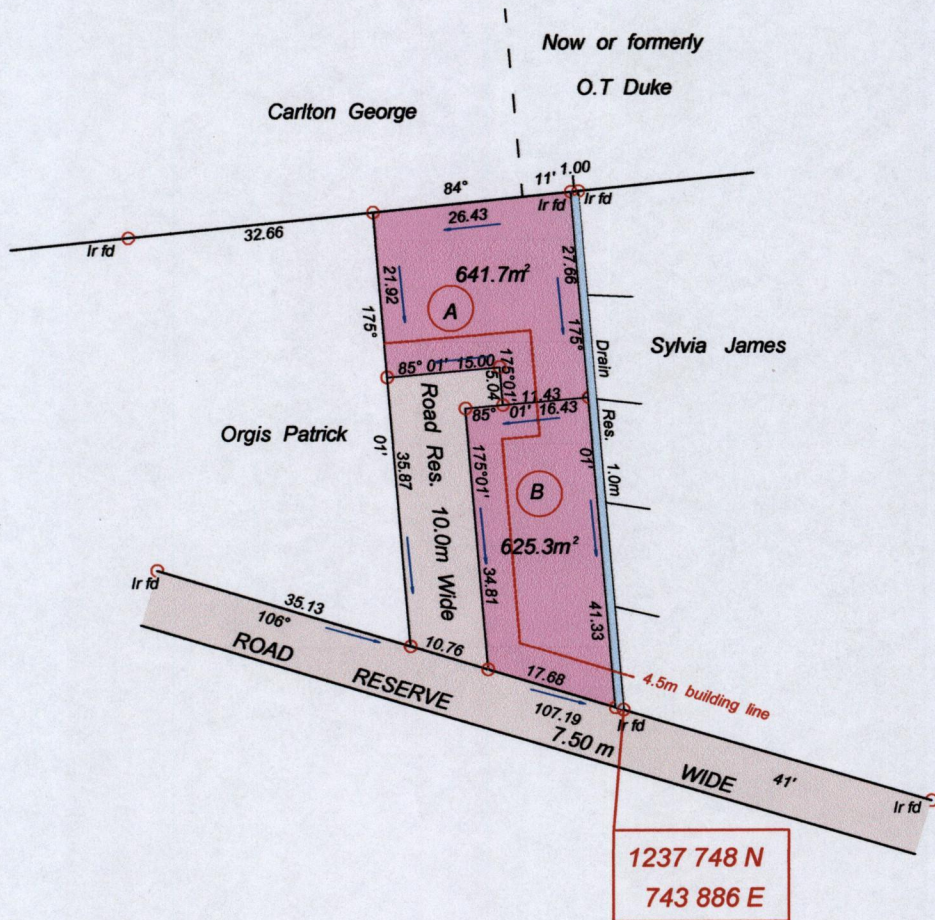
1504  
SIGNAL HILL

Cadastral Sheet 1171  
Ward of Tobago  
Parish of St Andrew

1F  
316  
127

Process ID#111329

UTM  
Grid North



Naparima UTM Zone 20 (+/-) 4m  
Note : Coordinates obtained by hand held G.P.S.

Bearings are UTM grid based on Solar Observations  
denotes iron put unless otherwise stated



SCALE 1 : 1000

Distances are in metres

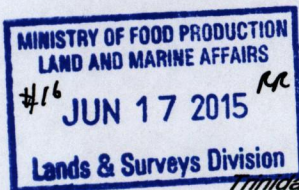
Plan of 2 parcels of land coloured pink in the Ward of Tobago

Containing A. Six hundred and forty one point seven square metres.

B. Six hundred and twenty five point three square metres.

Surveyed by me with due authority, in June 2015 at the request of Norbert George

Certified correct, in accordance with Reg. 25(1) of the Land Surveyors Regulations 1998.



Horace A. Achille

Trinidad and Tobago Land Surveyor 5<sup>th</sup> June 2015

Entered