

1564

115

U.P.I.N. No.

Cadastral Sheet $\frac{2J}{2/b}$, I.19.B.

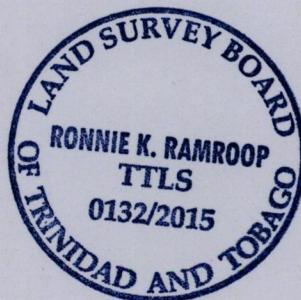
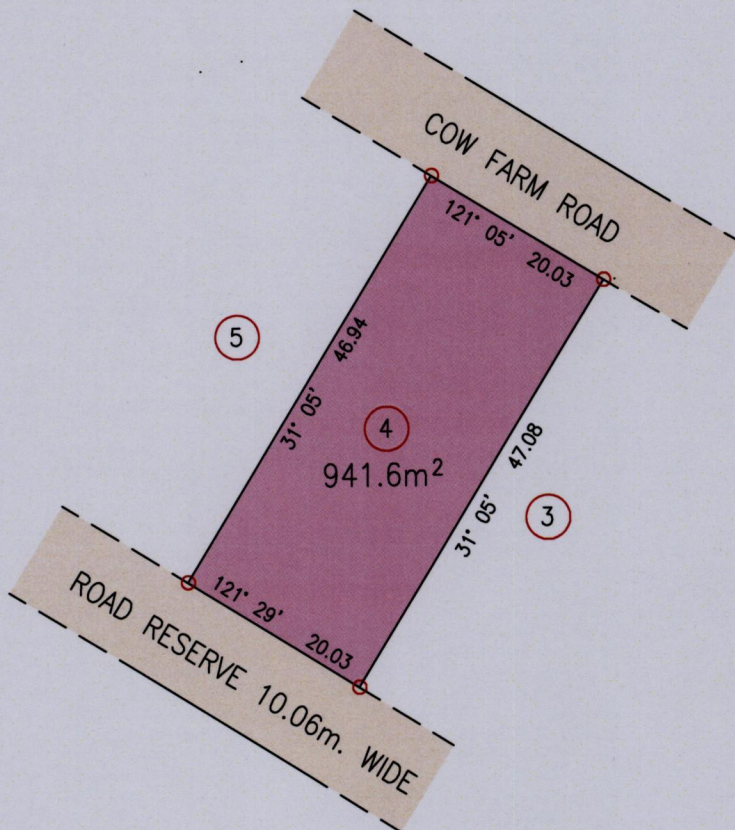
Process ID#111263

Ward of Tobago

"COMMERCIAL PARK, GOLDSBOROUGH"

Parish of St. Mary

Grid North
U.T.M.



A	E 758795.02
	N 1240223.76

Reliability Error ± 5.0 m.
 Coordinates are U.T.M. Zone 20, Naparima 1955
 Obtained from Handheld GPS Receiver

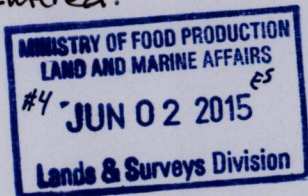
SCALE 1:750
 Distances are in Metres

Bearings are U.T.M. Zone 20 Grid based on Solar Obs.

○ Denotes Iron Put unless otherwise stated

Plan of a Parcel of land coloured pink in the Ward of Tobago
 Containing nine hundred and forty one point six square metres
 Surveyed by me, with due authority, in January 2015 for The Tobago House of Assembly
 Certified correct in accordance with Regulation 25(1) of the Land Surveyors Regulations 1998.

Entered:



Ramroop
 Trinidad & Tobago Land Surveyor 2nd June 2015