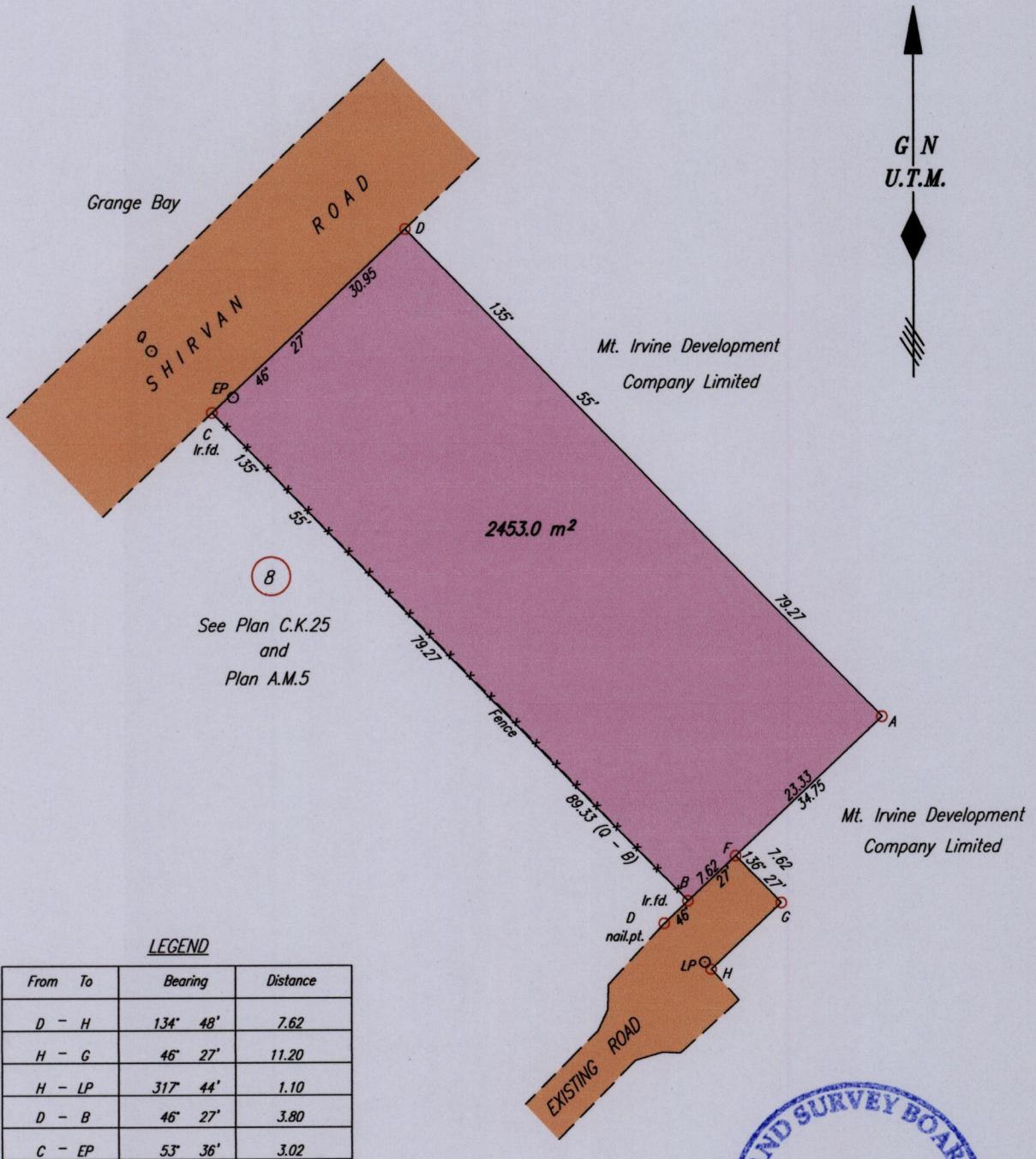


1564

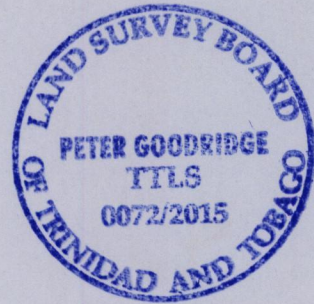
Process SA# 110076

MOUNT IRVINE



LEGEND

From	To	Bearing	Distance
D	H	134° 48'	7.62
H	G	46° 27'	11.20
H	LP	317° 44'	1.10
D	B	46° 27'	3.80
C	EP	53° 36'	3.02



Coordinates of A (lr.pt): 0740708mE 1237587mN
 U.T.M. W.G.S.84 (-/+ 3.00m)
 G.P.S. Direct observation using handheld receiver

SCALE 1:750

Distances are in METRES

- Denotes Iron put except where otherwise stated
- Bearings are U.T.M. Grid based on Solar Observations

PLAN of a Parcel of land coloured pink in the Ward of Tobago

Containing two thousand four hundred and fifty three point zero square metres

Surveyed by me, with due authority, in May 2015 for Mount Irvine Development Company Limited

Certified Correct in accordance with Regulation 25 (1) of The Land Surveyors' Regulations 1998,

Entered

[Signature] .TTLS

