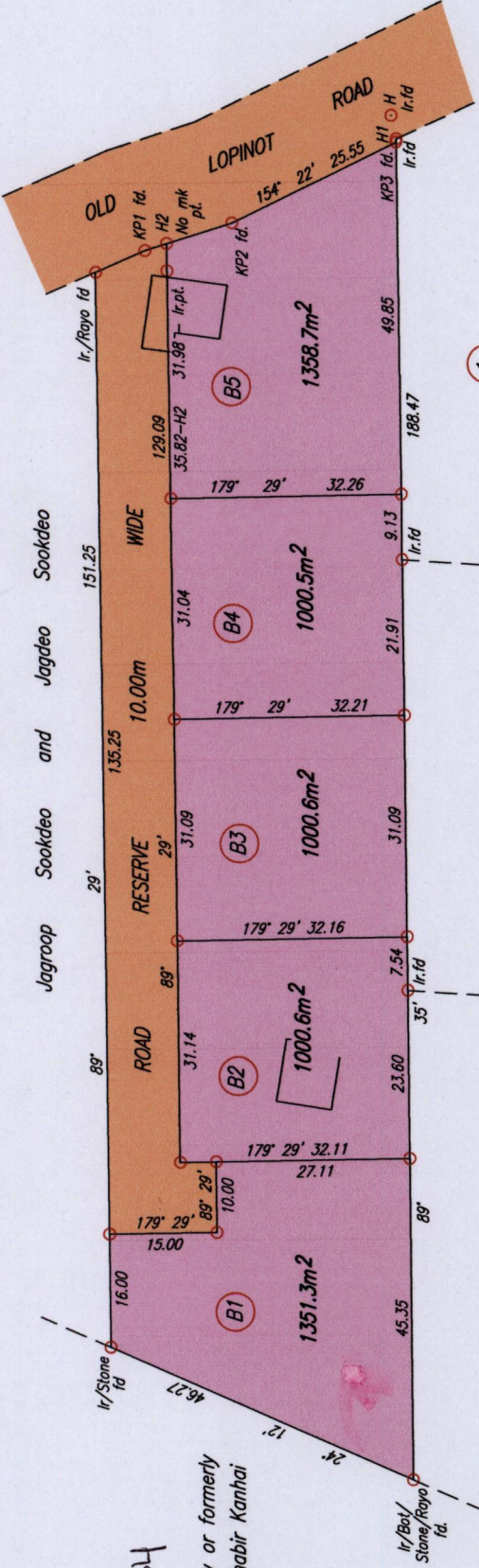


1563

34



Process # 110034

Now or formerly
Mahabir Kanhai

Now or formerly James Quacoco & Others
Plan R.C. 78

Coordinates of KP1 fd.: 0682887mE, 1178878mN
U.T.M. 20 WGS (+/- 7.00m)
G.P.S. Direct Observation using a handheld receiver

LEGEND

From	To	Bearing	Distance
H1	- KP3	281° 02'	0.48
KP3	- KP2	334° 22'	25.55
KP2	- H2	342° 55'	9.52
KP2	- KP1	342° 55'	12.74
KP1	- Ir/Royal	336° 35'	7.51
H1	- H	77° 53'	3.35

KP = King Post

SCALE 1:1000

Distances are in METRES

PLAN of 5 Parcels of land coloured pink in the Ward of Tacarigua

Containing together five thousand seven hundred and eleven point seven square metres

Surveyed by me, with due authority, in March 2013 for Caroline Olivier

Certified Correct in accordance with Regulation 25 (1) of The Land Surveyors Regulations 1998,

Entered:

MINISTRY OF FOOD PRODUCTION
LAND AND MARINE AFFAIRS
JUN 01 2015
#10
Lands & Surveys Division

Camille Fortune-Rollock .TTLs

Trinidad & Tobago Land Surveyor
C:\LESS 2013\TRINIDAD\OLD LOPINOT ROAD.dwg
1st June 2015



H.G.P.
S.L.P.