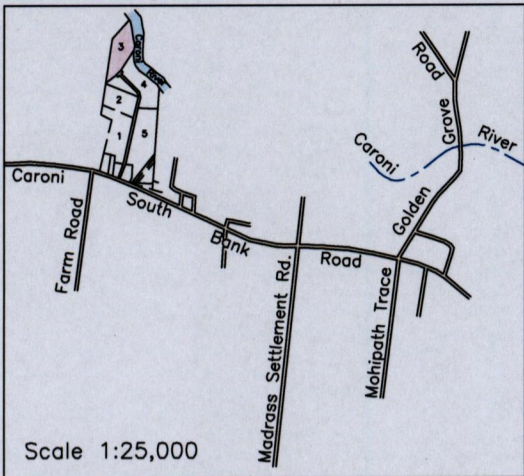
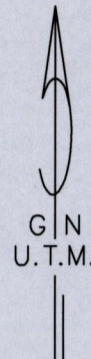


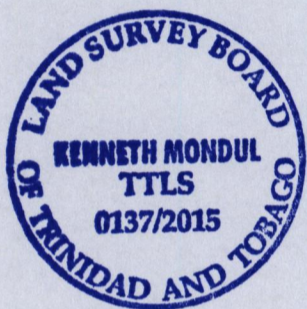
Location Diagram



24E
 Cadastral Sheet 1/c (B.23.P.)
 Ward of Tacarigua
 County of St. George
 Kelly Village
 St. Helena



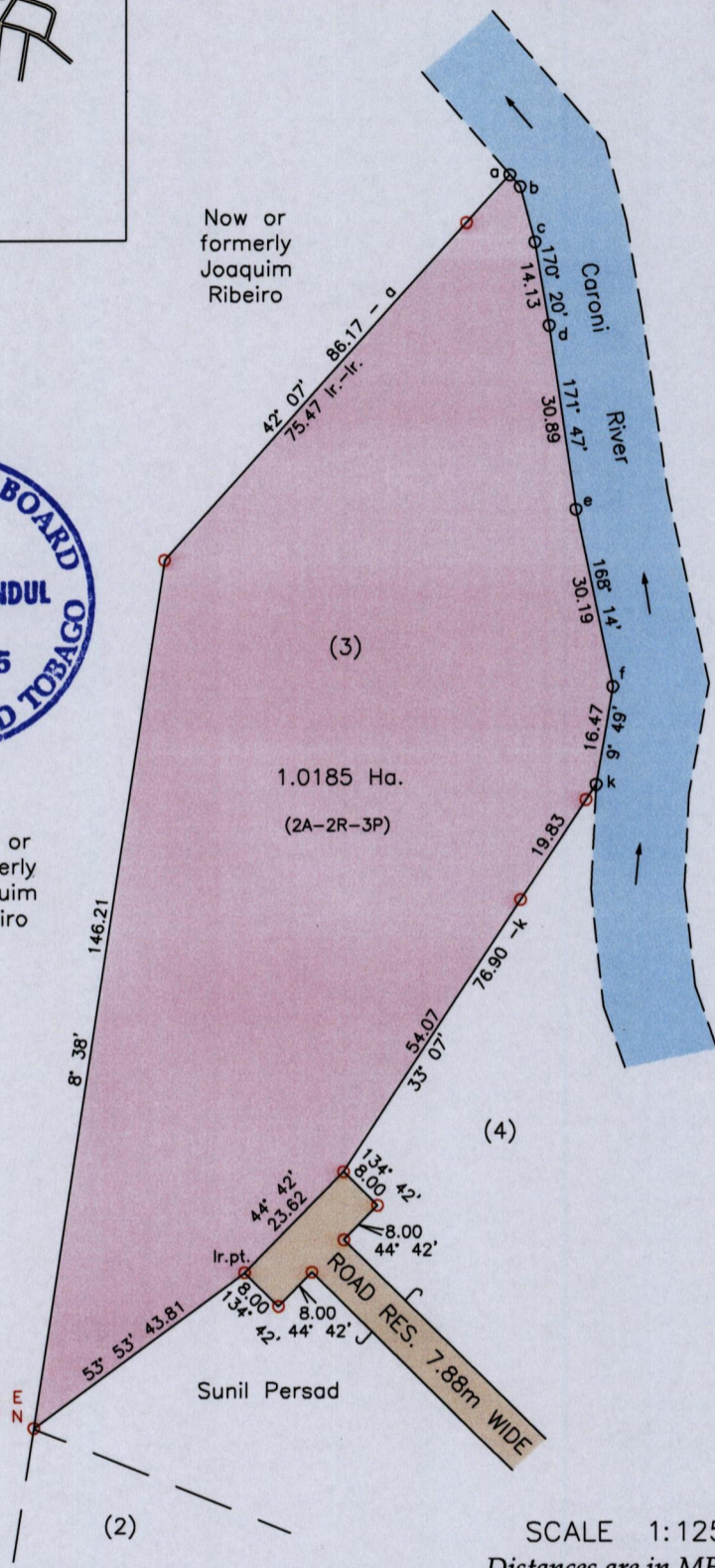
From	To	Bearing	Distance
a	b	139° 06'	2.60
b	c	165° 05'	9.52



Now or formerly Joaquim Ribeiro

680491 E
 1170617 N

References:
 PLAN R.H.197
 PLAN X.E.25
 R.D.# 198714939041



SCALE 1:1250
 Distances are in METRES

- Notes:
- o Denotes lr.fd. unless otherwise indicated
 - o a,b,c,d,e,f,k = No Mark put
 - Bearings are U.T.M. Grid based on Solar Observations
 - Coordinates obtained by handheld GPS (UTM Zone 20, Naparima ± 5.0m)

PLAN of a parcel of land coloured pink in the Ward of Tacarigua
 Containing one point zero one eight five hectares
 Surveyed by me, with due authority, in March 2015 at the request of Sunil Persad
 Certified Correct in accordance with Regulation 25(1) of the Land Surveyors Regulations 1998.

Checked by

Kenneth Mondul

 Trinidad and Tobago Land Surveyor, 31st March 2015

