

1503

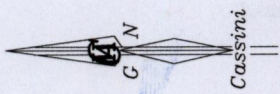
12

Cadastral Sheet B.23.L $\frac{24B}{3/C}$

Ward of Tacarigua
County of St. George

Mohan Trace, Piarce

Portion of Plot No.51
in Plan A.K. 93



Station	Bearing	Distance	Station
A	08° 02'	26.15	LP#1
A	08° 30'	13.56	Hydrant

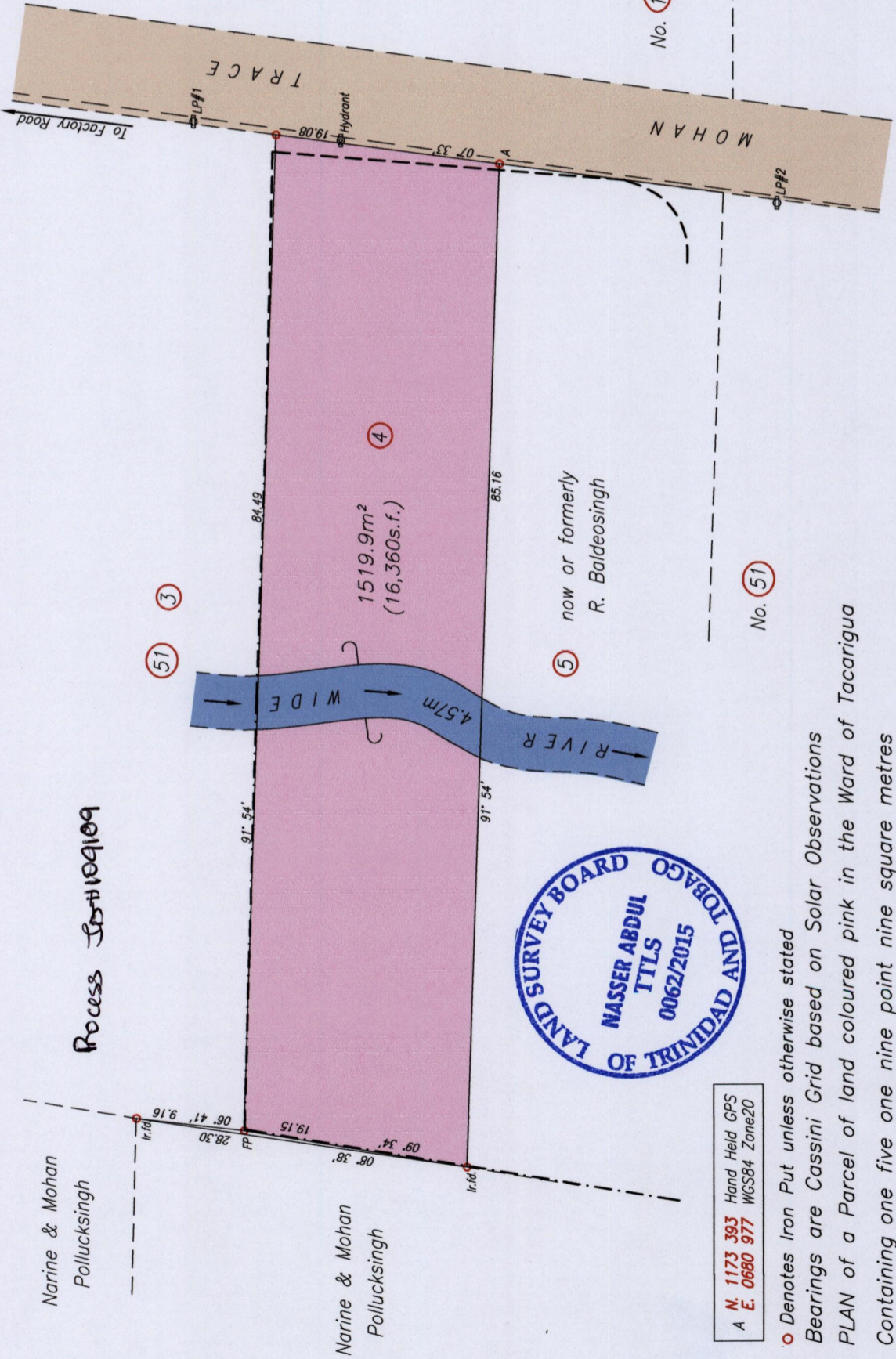
--- Wall
- - - - - Wire Fence

SCALE 1/500
Distances are in metres

MINISTRY OF FOOD PRODUCTION
LAND AND MARINE AFFAIRS
APR 17 2015
#229
Lands & Surveys Division

Abel Mull
17th Ave

Trinidad & Tobago Land Surveyor2015



No. 138

No. 51

LAND SURVEY BOARD
OF TRINIDAD AND TOBAGO
NASSER ABDUL
TTLS
0062/2015

A N. 1173 393 Hand Held GPS
E. 0680 977 WGS84 Zone20

o Denotes Iron Put unless otherwise stated
Bearings are Cassini Grid based on Solar Observations
PLAN of a Parcel of land coloured pink in the Ward of Tacarigua
Containing one five one nine point nine square metres
Surveyed with due authority in April 2015 for Kall Properties Limited
Certified correct in accordance with Regulation 25 (1) of the Land Surveyors' Regulations 1998,

Entered on