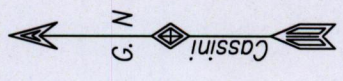
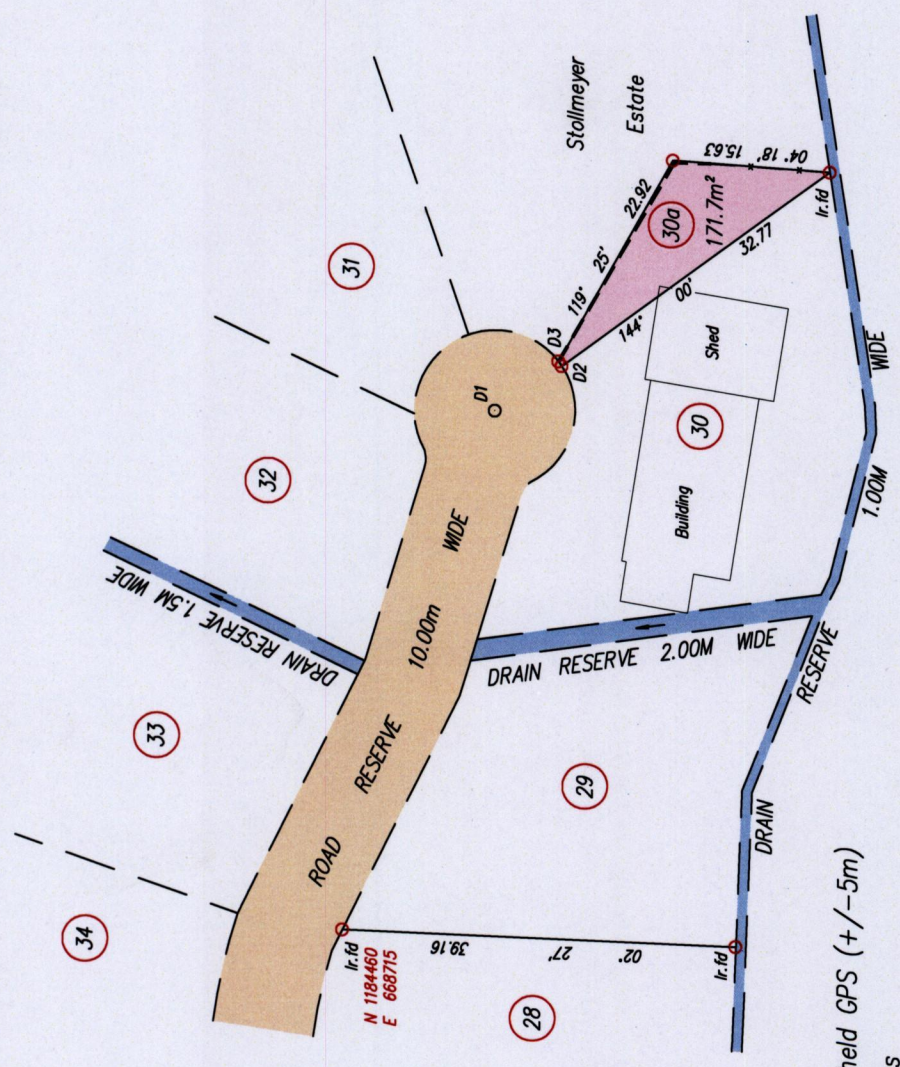


Cadastral Sheet B.15.1 13B
4/d
Ward of St. Anns
County of St. George

1561



95



SCALE 1:750
Distances are in metres

D1 - D2 : 146° 16' 8.00
D1 - D3 : 142° 08' 8.00

Process ID # 109594



--- x --- Wire Fence
--- Block Wall

o Denotes Iron put except where stated otherwise
Co-ordinates are Naparima/UTM, derived using Handheld GPS (+/-5m)
Bearings are Cassini Grid based on Solar Observations
PLAN of a parcel of land coloured pink in the Ward of St. Anns
Containing one hundred and seventy one point seven square metres
Surveyed by me, with due authority in April 2015, at the request of Dennis Christopher Scott
Certified correct in accordance with Regulation 25 (1) of the Land Surveyors Regulations 1998.

Checked by *Christian Persad*

Entered on Trinidad & Tobago Land Surveyor. . . 4th May 2015
PATH = ADA03 D:/CADAS2/D.SCOTT.DWG

