

1561

93

Cadastral Sheet A.20.K. $\frac{13E}{3/c}$

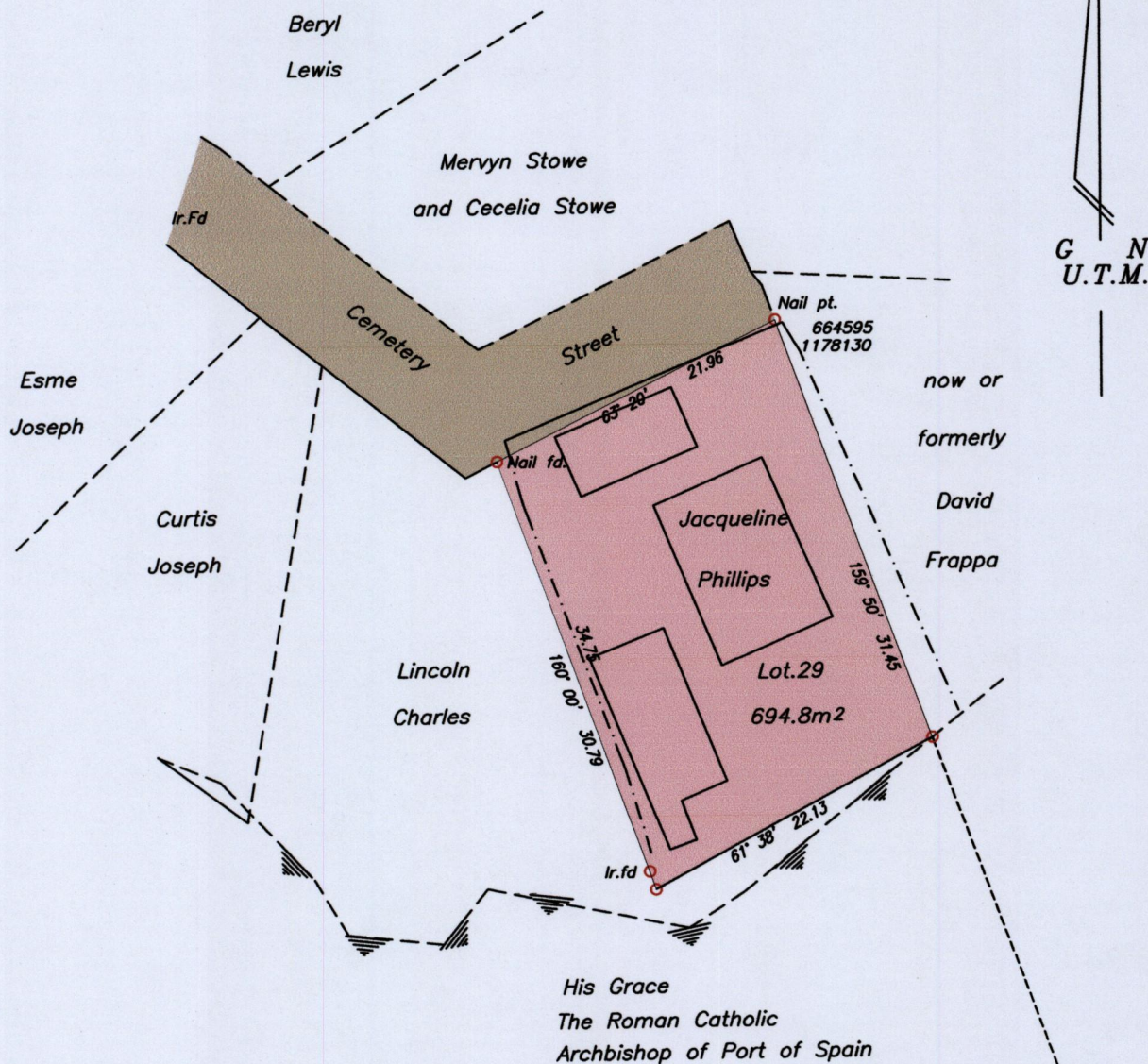
City of Port of Spain

County of St. George

RCA Laventille

Lot.29

Process ID#109577



G N
U.T.M.

now or
formerly
David
Frappa

His Grace
The Roman Catholic
Archbishop of Port of Spain

----- fence

See Plan: EA 135itscale



SCALE 1/500

Distances are in metres

○ Denotes Ir.pt. except where otherwise stated
 Co-ordinates are UTM zone 20N Naparima Datum +/-5m
 obtained from 1/10000 Sheet
 Bearings are U.T.M. grid based on marks found
 Note: To obtain compass bearings add 20 minutes.

PLAN of a Parcel of land coloured pink in the City of Port of Spain

Containing six nine four point eight square metres

Surveyed by me, with due authority, in July 2013

for His Grace The Roman Catholic Archbishop of Port of Spain

Certified correct in accordance with Regulation 25 (1) of the Land Surveyors Regulations 1998.

Checked by.....

..... *L. E. Apperley*

Entered..... Trinidad & Tobago Land Surveyor

26/4/15

RCA \RCA Laventille Jacqueline Phillips

