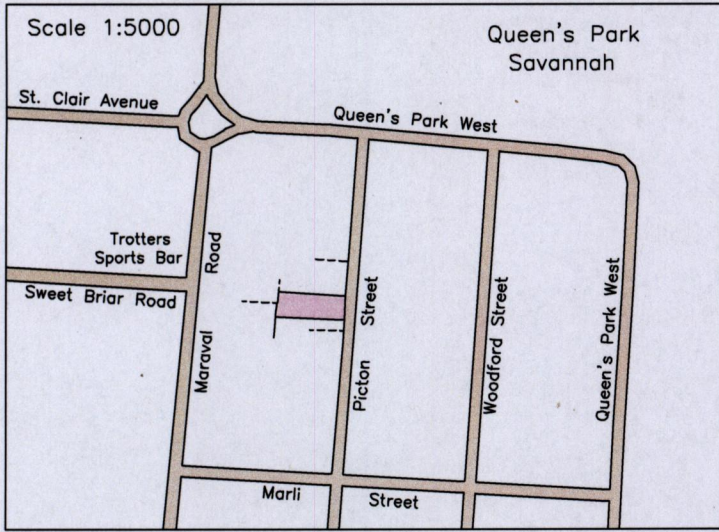


1561

87

Location Diagram

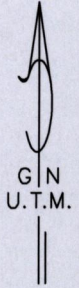


13D&23A

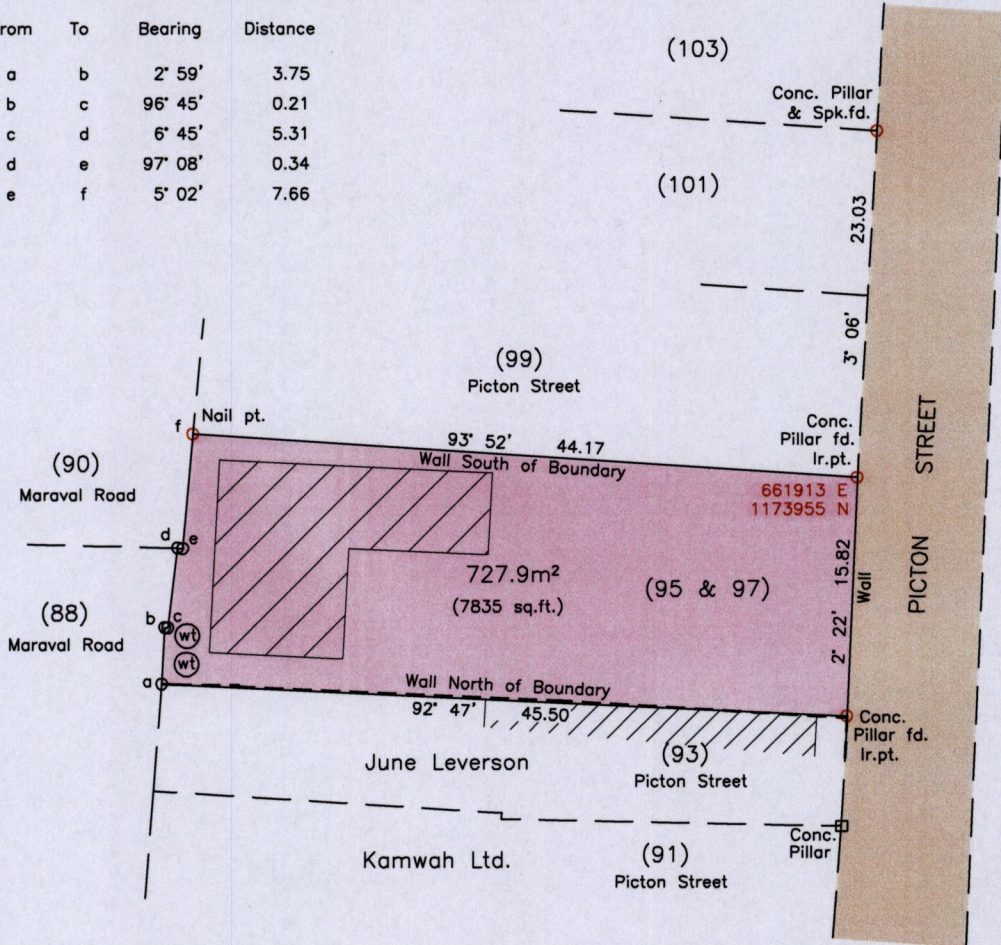
Cadastral Sheet 4/d A.20.F.
City of Port of Spain
County of St. George

Newtown

Process ID#109564



From	To	Bearing	Distance
a	b	2° 59'	3.75
b	c	96° 45'	0.21
c	d	6° 45'	5.31
d	e	97° 08'	0.34
e	f	5° 02'	7.66



a-b-c-d-e = Wall East of B'dry
e-f = Wall West of B'dry

Water Tank (wl)

Reference:
Bk.1254 Fol.33

SCALE 1:500
Distances are in metres

Notes: o a,b,c,d,e Denotes Wall Corner unless otherwise indicated
Bearings are U.T.M. Grid based on Solar Observations
Coordinates obtained using handheld GPS (UTM Zone 20, Naparima ± 5.0m)

PLAN of a parcel of land coloured pink in the City of Port of Spain
Containing seven hundred and twenty seven point nine square metres
Surveyed by me, with due authority, in April 2015 for Kamwah Limited
Certified Correct in accordance with Regulation 25(1) of the Land Surveyors Regulations 1998.



Checked by *Calvin Archibald*

Entered on Trinidad and Tobago Land Surveyor, *1st May*2015.

ARCH01/2015

