

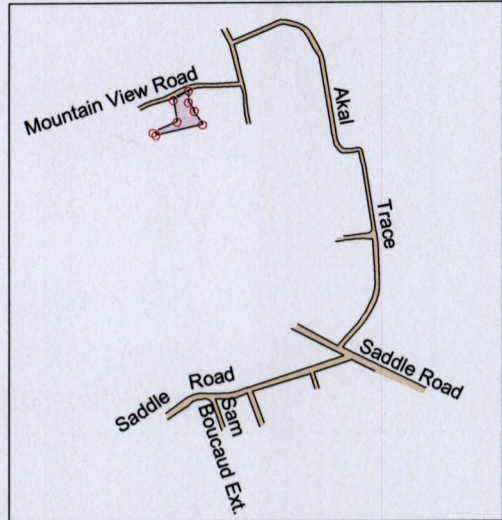
1561

13B

Location Diagram

Cadastral Sheet 13B/4/a B.12
Ward of St. Anns
County of St. George

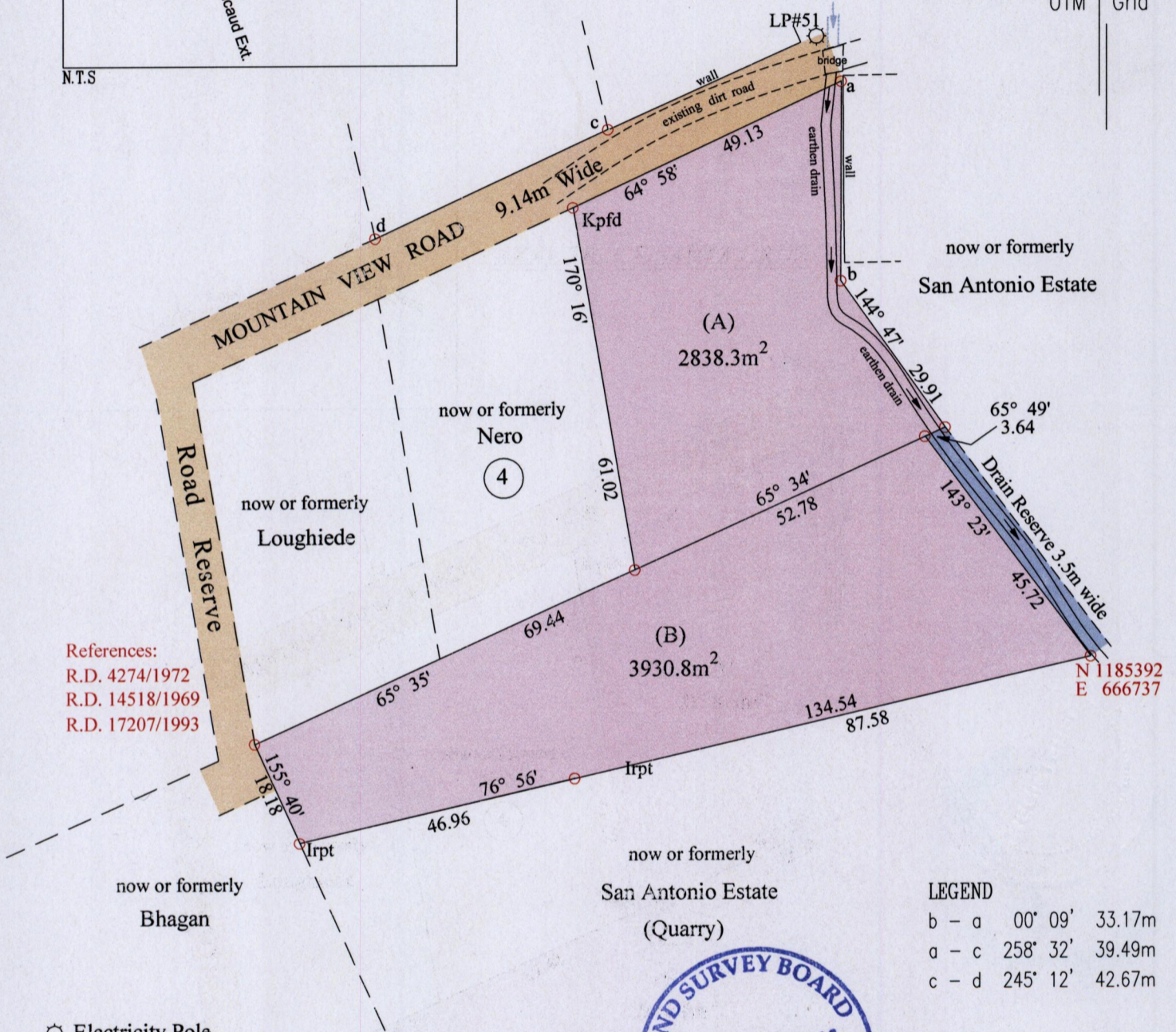
Process ID#109561



AKAL TRACE/SANTA CRUZ

UTM Grid

N.T.S



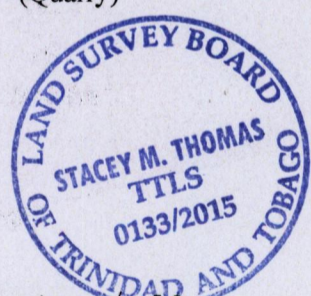
- References:
- R.D. 4274/1972
- R.D. 14518/1969
- R.D. 17207/1993

N 1185392
E 666737

LEGEND

b - a	00° 09'	33.17m
a - c	258° 32'	39.49m
c - d	245° 12'	42.67m

SCALE 1:1000
Distances are in Metres



⊙ Electricity Pole

- Denotes Iron Found unless otherwise stated
- Bearings are UTM Grid based on Solar Observations.
- Coordinates obtained using hand held GPS UTM zone 20, Naparima +/- 5.0m

Plan of two Parcels of land coloured pink in the Ward of St. Anns
Containing together six thousand seven hundred and sixty nine point one square metres
Surveyed by me, with due authority, in January 2015 for Jasmine Dubarry
In accordance with Rule 25(1) of the Land Surveyors' Regulations 1998, I certify that this plan is correct.

MINISTRY OF FOOD PRODUCTION
LAND AND MARINE AFFAIRS
MAY 01 2015
#5 RR
Lands & Surveys Division

Jasmine Thomas
Trinidad & Tobago Land Surveyor 1st / May 2015

Entered