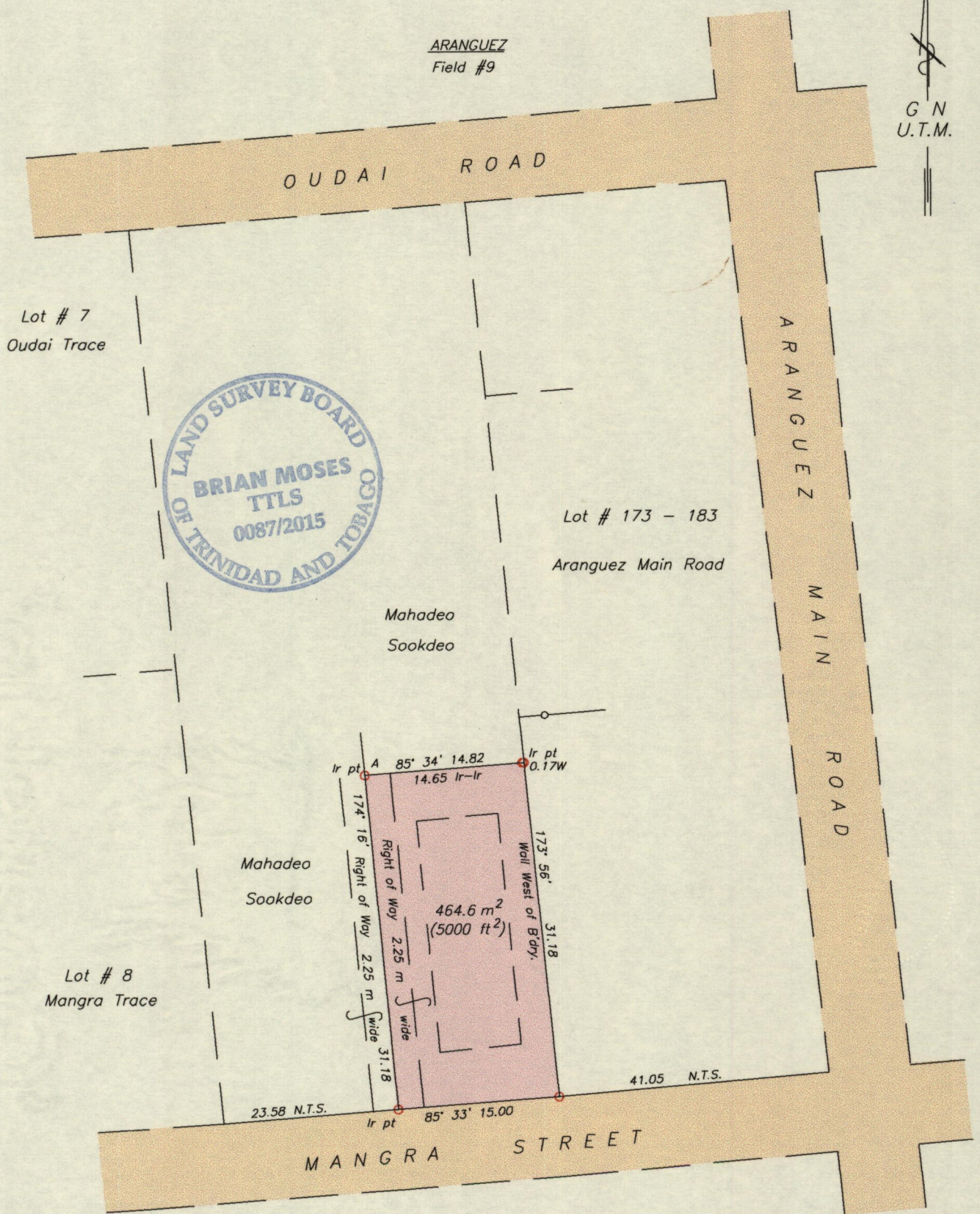


1561

688

Process ID# 109185

Cadastral Sheet B.17.N. <sup>23C</sup>/<sub>1/d</sub>  
Ward of St. Anns  
County of St. George



—○— wall  
 A - N 1176278  
 E 670591  
 Derived From Hand-Held GPS (+/-5 m)  
 UTM Zone 20 Naparima Co-ordinates

SCALE 1:500  
 Distances are in METRES

MINISTRY OF FOOD PRODUCTION  
 LAND AND MARINE AFFAIRS  
 APR 17 2015  
 #234  
 Lands & Surveys Division

Bearings are U.T.M. Grid based on Solar observations  
 PLAN of a Parcel of land coloured pink in the Ward of St. Anns  
 Containing four six four point six square metres  
 Surveyed by me, with due authority, in March, 2015 for Lilloutie Rmdass, Mohan Ramdass,  
 Jeniferr Ramdass & Rana Ramdass  
 Certified correct in accordance with Regulation 25 (1) of the Land Surveyors' Regulations 1998

Entered

*Brian Moses*  
 Trinidad & Tobago Land Surveyor (T.T.L.S.)  
 17th April 2015