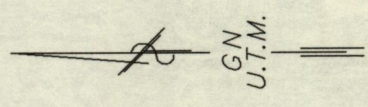
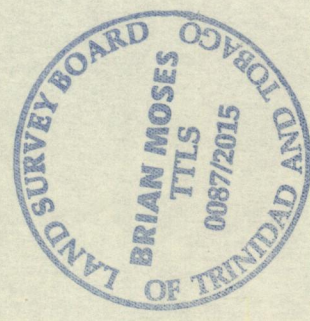


Cadastral Sheet B.17.E. <sup>13E</sup>/<sub>4/b</sub>

Ward of St. Anns  
County of St. George



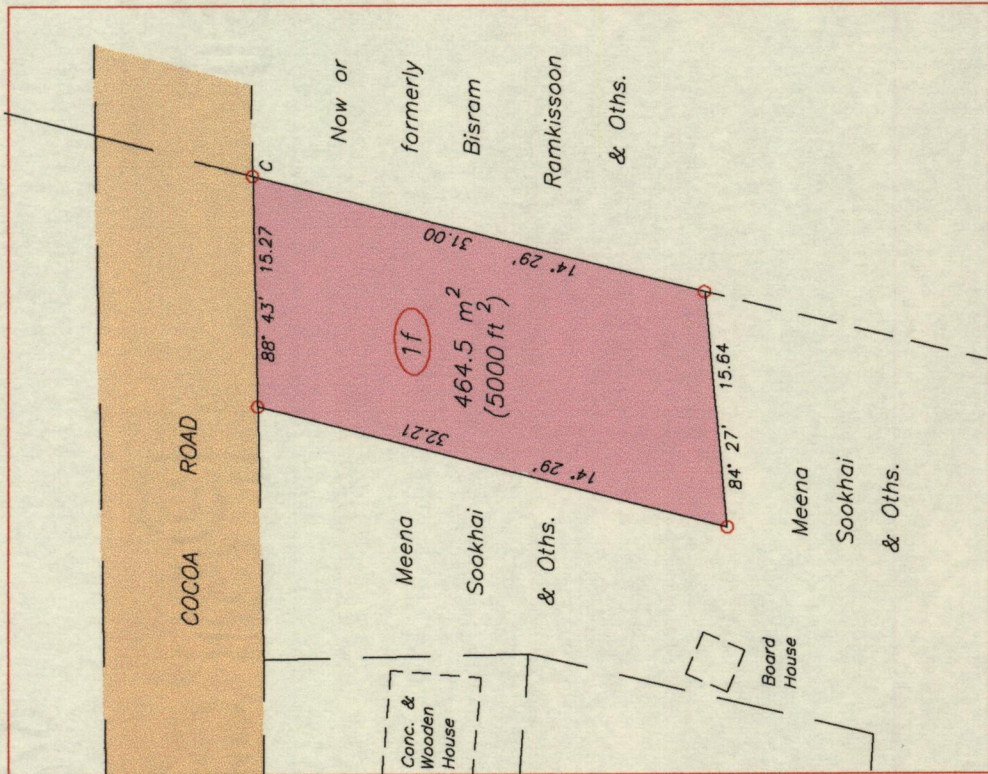
1561



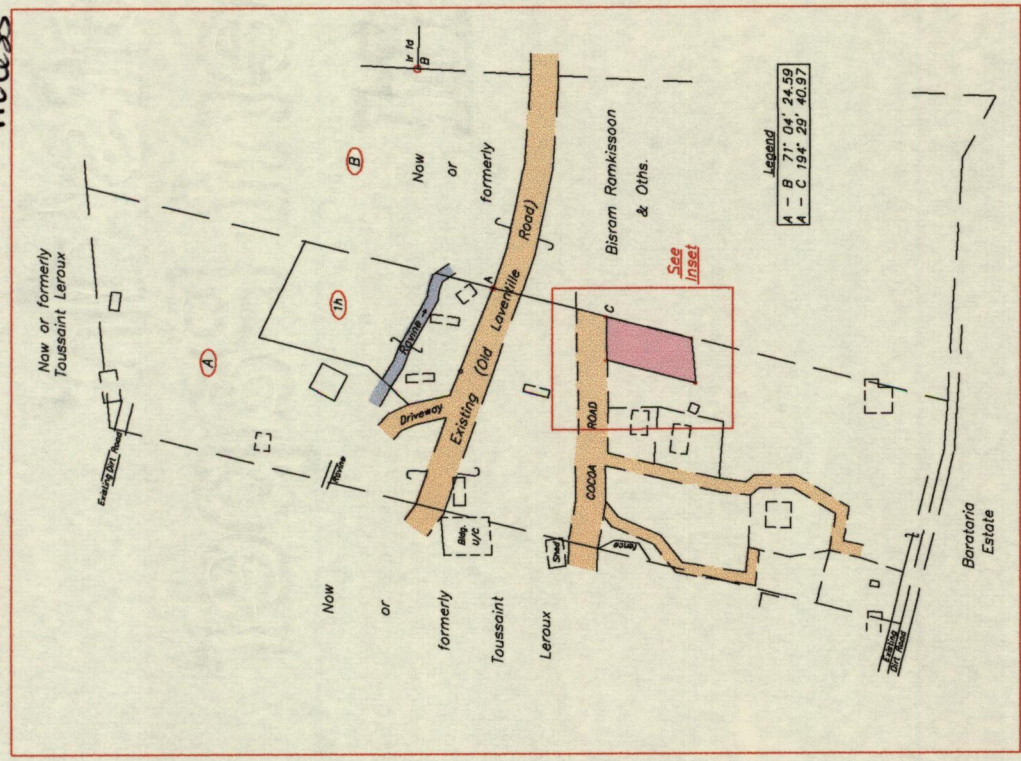
B - N 1179590  
E 667671  
Derived From Hand-Held GPS (+/-5 m)  
UTM Zone 20 Naparima Co-ordinates

SCALE 1:500  
Distances are in METRES

Inset



Location Plan Not to Scale Process 109177



o Denotes iron put unless otherwise stated  
Bearings are U.T.M. Grid based on Solar observations

PLAN of a Parcel of land coloured pink in the Ward of St. Anns.  
Containing four six four point five square metres  
Surveyed by me, with due authority, in March, 2015 for Meena Sookhai & Oths.  
Certified Correct in accordance with Regulation 25 (1) of the Land Surveyors Regulation 1998.



*Brian Moses*  
Trinidad & Tobago Land Surveyor (T.T.L.S.)  
17 April 2015

*Entered*