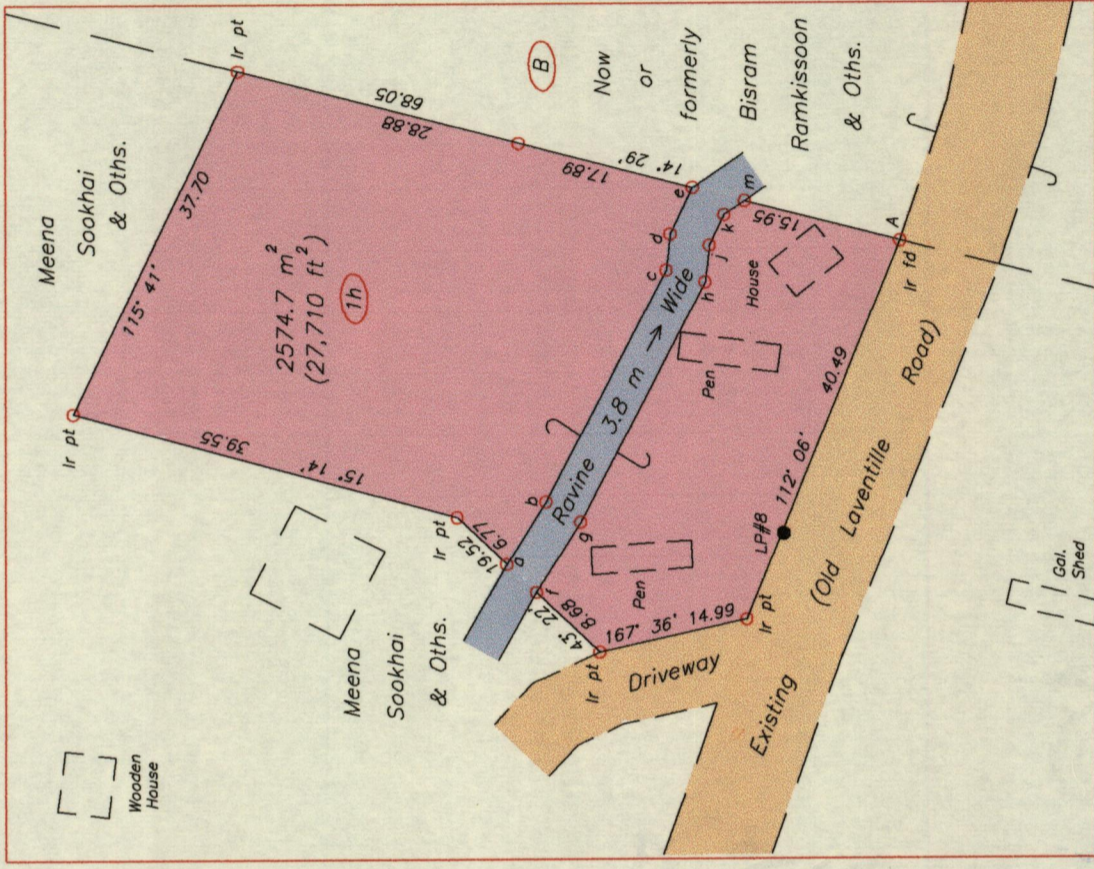
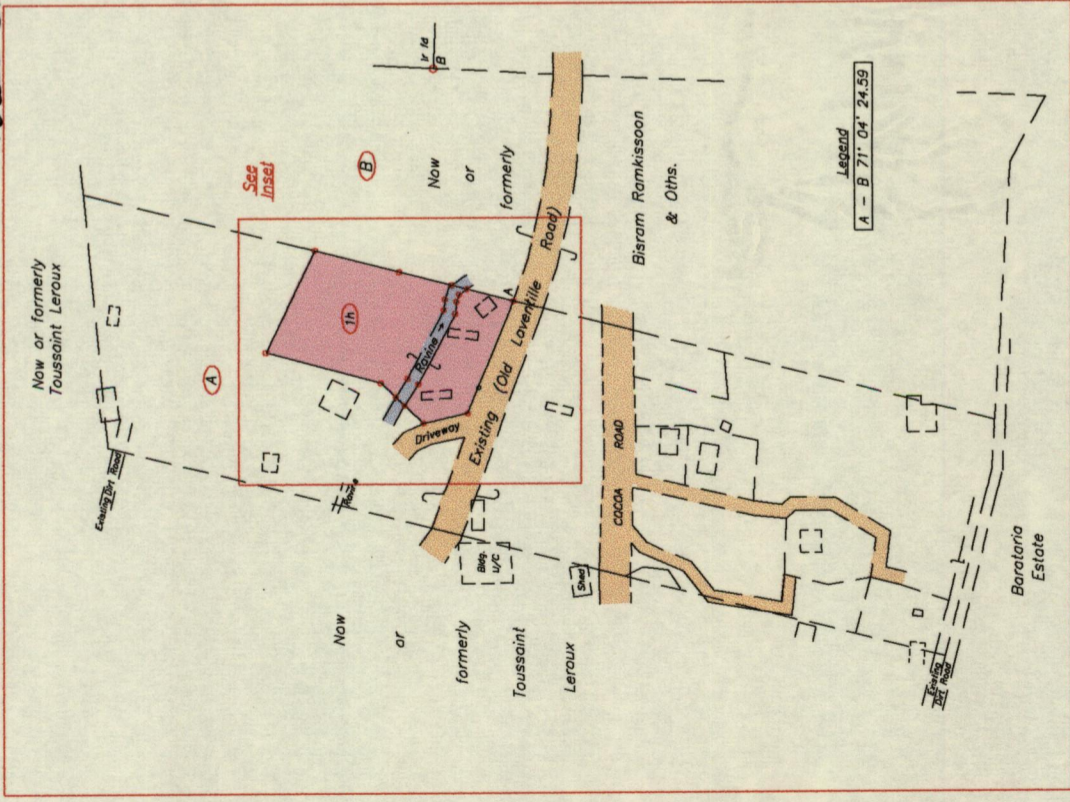
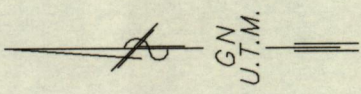


Location Plan Process # 109115

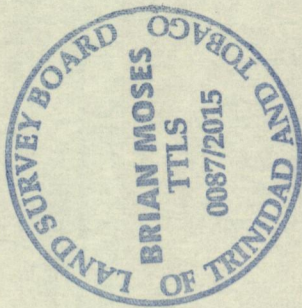
Inset



Cadastral Sheet B.17.E. 13E
4/b
Ward of St. Anns
County of St. George



1561



Legend

a - b	122° 24'	7.31
b - c	117° 37'	25.87
c - d	96° 36'	3.62
d - e	115° 38'	5.12
f - g	122° 24'	8.25
g - h	117° 37'	26.78
h - j	96° 36'	3.69
j - k	115° 38'	3.36
k - m	145° 52'	2.44

B - N 1179590
E 667671
Derived From Hand-Held GPS (+/-5 m)
UTM Zone 20 Naparima Co-ordinates

SCALE 1:750
Distances are in METRES

MINISTRY OF FOOD PRODUCTION
LANDS AND MARINE AFFAIRS
APR 17 2015
4232
Lands & Surveys Division

65

Brian Moses

Trinidad & Tobago Land Surveyor (T.T.L.S.)
17th April 2015

o Denotes No mk put unless otherwise stated
Bearings are U.T.M. Grid based on Solar observations

PLAN of a Parcel of land coloured pink in the Ward of St. Anns.
Containing two five seven four point seven square metres
Surveyed by me, with due authority, in March, 2015 for Meena Sookhai & Oths.
Certified Correct in accordance with Regulation 25 (1) of the Land Surveyors Regulation 1998.

Entered