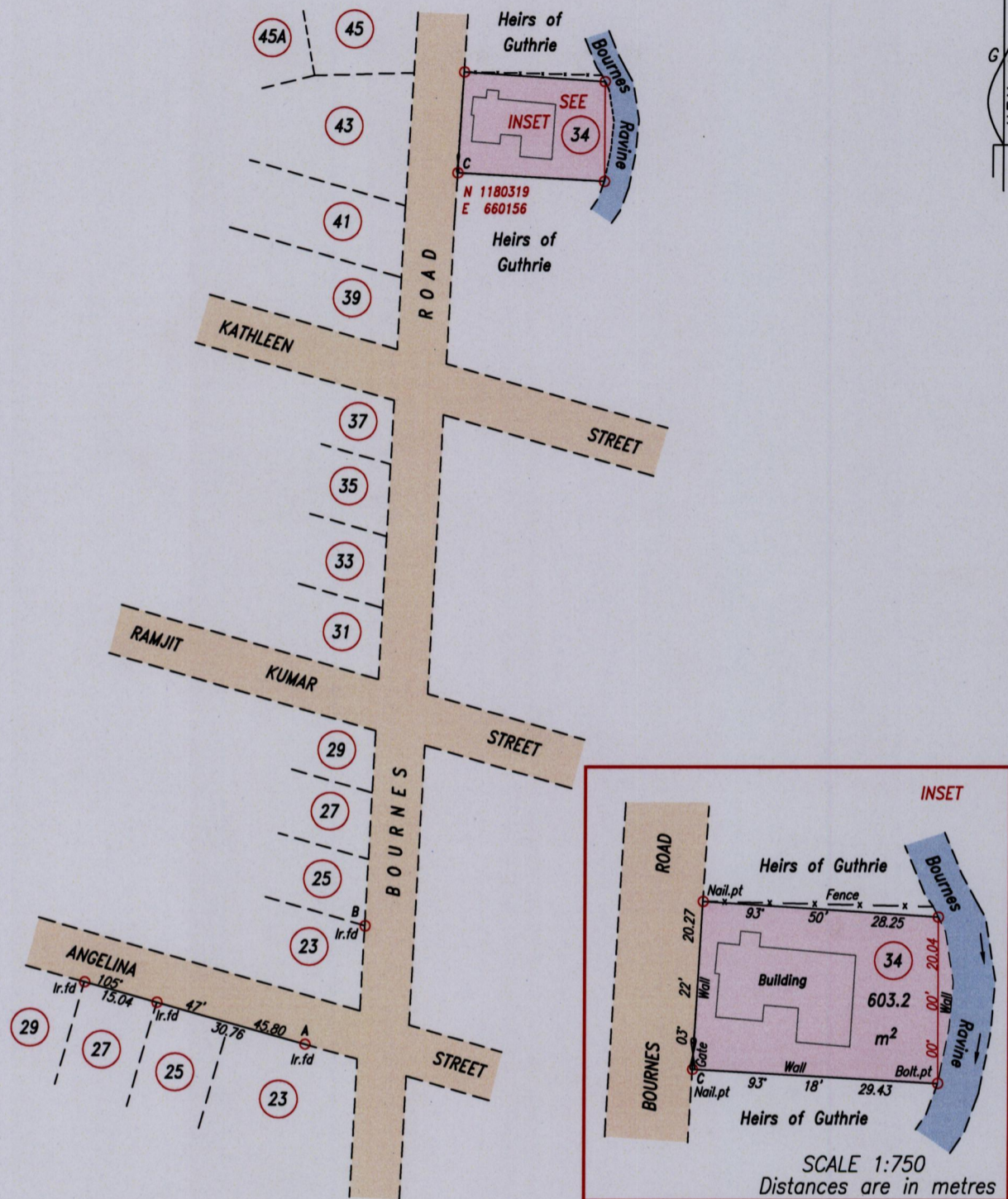
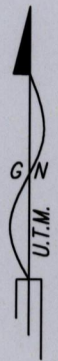


1561

62

Process SD#109170

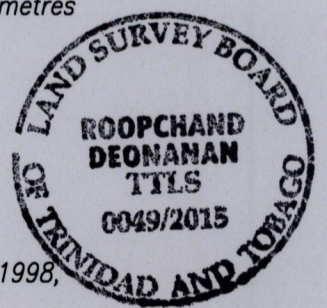
Cadastral Sheet A.20.E. 13D
City of Port-of-Spain
County of St. George



A - B : 26° 39' 26.63
B - C : 06° 45' 151.86

SCALE 1:1250
Distances are in metres

○ Denotes Iron put except where otherwise stated
 Bearings are U.T.M. Grid based on Solar Observations
 Co-ordinates are Naparima/UTM, derived using Handheld GPS (+/-5m)
 PLAN of a Parcel of land coloured pink in the City of Port-of-Spain
 Containing six hundred and three point two square metres
 Surveyed by me, with due authority, in April 2015 for Nkomo Kamau
 Certified Correct in accordance with Regulation 25 (1) of the Land Surveyors' Regulations 1998,



Checked by *Deonanan*

Entered on Trinidad & Tobago Land Surveyor. 16th April 2015
PATH = ADA004 D:/DEO/BORNES ROAD N.KAMAU DWG.

