

R.D.# 7766/1979

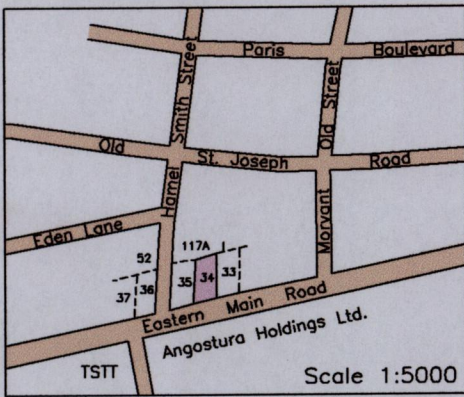
Process ID#109163

Location Diagram

1501

Cadastral Sheet 23B  
2/a (A.20.P)  
Ward of St. Anns  
County of St. George

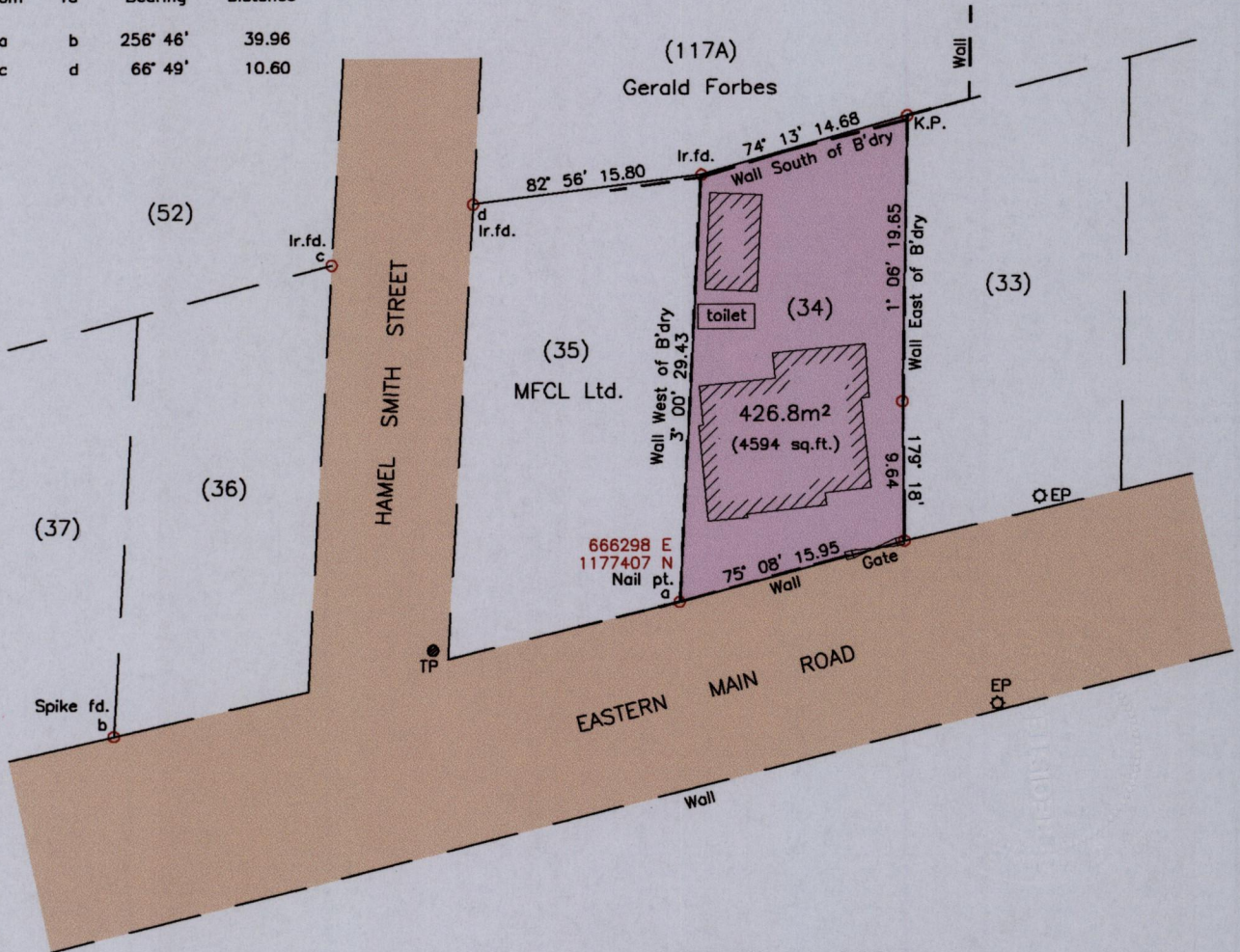
59



Lot 34 also called #168  
Eastern Main Road  
Laventille

G N  
U.T.M.

From	To	Bearing	Distance
a	b	256° 46'	39.96
c	d	66° 49'	10.60



SCALE 1:500  
Distances are in metres

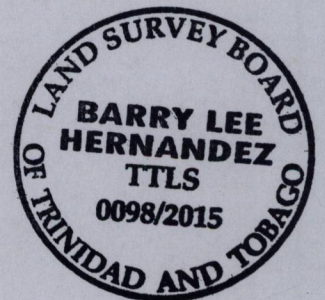
References:  
PLAN K.T.40  
R.D.# 7488/1945

Legend

Electricity Pole	○ EP
Telephone Pole	● TP
King Post	○ K.P.

Notes: ○ Denotes Ir.pt. unless otherwise stated  
Bearings are U.T.M. Grid based on Solar Observations  
Coordinates obtained using handheld GPS (UTM Zone 20, Naparima ± 5.0m)

PLAN of a parcel of land coloured pink in the Ward of St. Anns  
Containing four hundred and twenty six point eight square metres  
Surveyed by me, with due authority, in March 2015 for Patrick Clemendor  
Certified Correct in accordance with Regulation 25(1) of the Land Surveyors Regulations 1998.



Checked by .....  
Entered on ..... Trinidad and Tobago Land Surveyor, 15<sup>th</sup> Apr 2015.

