

Cadastral Sheet 13B  
47/d (B.12.I.)  
Ward of St. Anns  
County of St. George

La Sagesse Road, Santa Cruz

R.D.#15131/1992

Process ID# 109162

From	To	Bearing	Distance
d	e	218° 43'	4.00
e	f	128° 43'	8.00
g	h	308° 43'	8.00
h	m	218° 43'	4.00
n	p	127° 41'	10.17
r	q	299° 16'	10.44

Legend

- Lightpole LP
- Fire Hydrant FH
- Telephone Pole TP

Reference:  
PLAN G.A.173

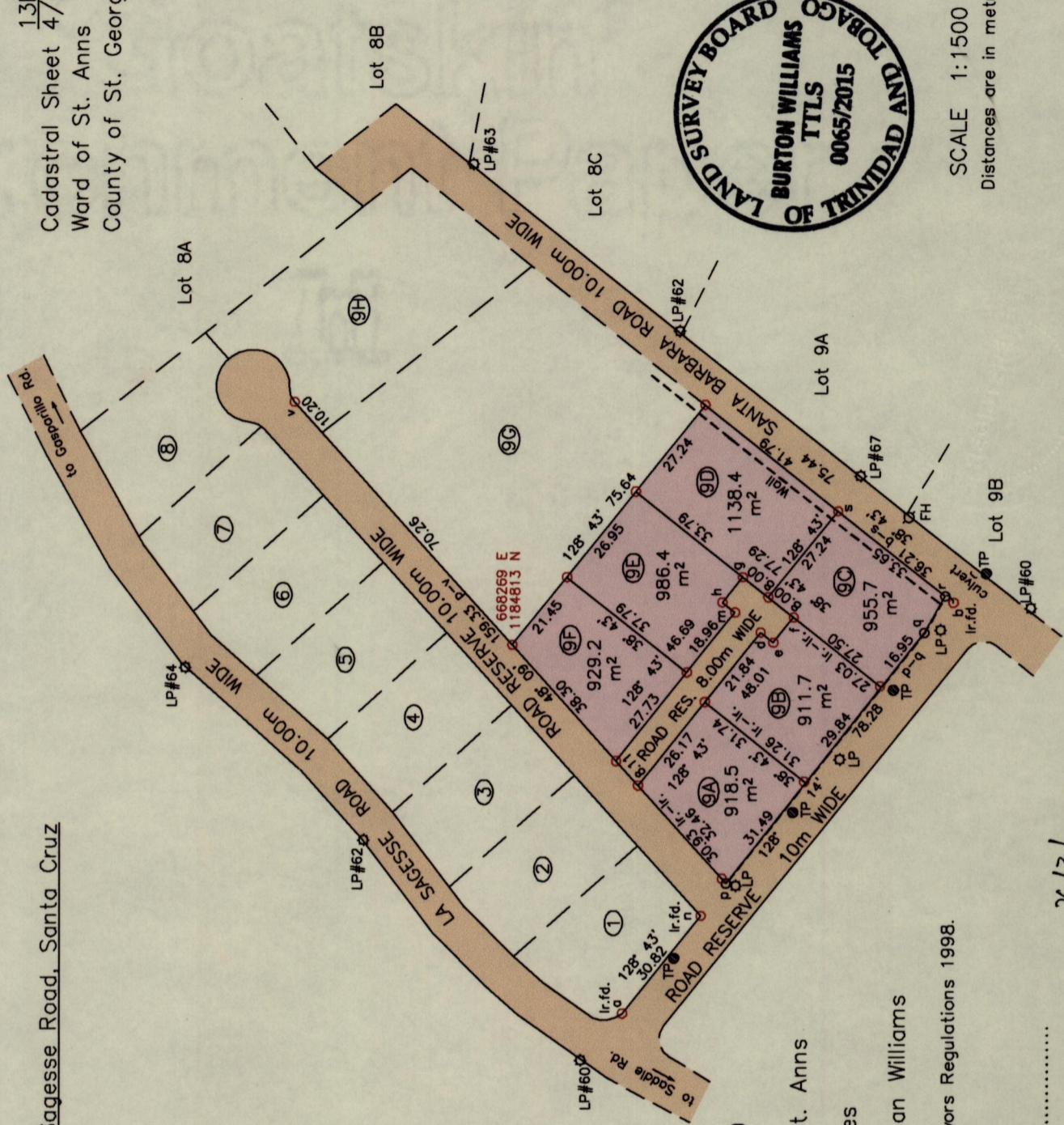
p-q-r = Wall & Concrete Drain West of Boundary

Notes: ○ Denotes Ir.pt. unless otherwise indicated  
 ○ p,q,r = No Mark put  
 Bearings are U.T.M. Grid based on Solar Observations  
 Previous surveys by Anwar Ali in Nov. 1993 and July 1990  
 Previous survey by George Johnson in Dec. 2005 for Dale McLeod  
 Coordinates obtained by handheld GPS (UTM 20, Naparima ± 5.0m)

PLAN of 6 parcels of land coloured pink in the Ward of St. Anns  
 Containing together zero point five eight four zero hectares  
 Surveyed by me, with due authority, in March 2015 for Allan Williams  
 Certified Correct in accordance with Regulation 25(1) of the Land Surveyors Regulations 1998.

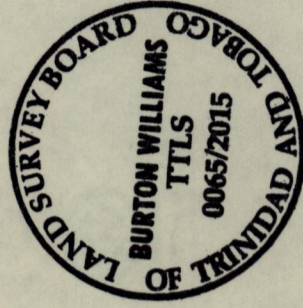
Checked by .....  
 Entered on .....  
 APR 14 2015  
 #17488  
 Lands & Surveys Division

26/3/2015.



1561

G N  
U.T.M.



SCALE 1:1500  
Distances are in metres

58

G402007N1.DWG