

1561

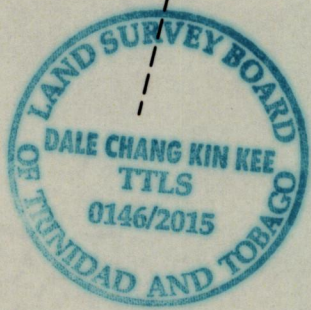
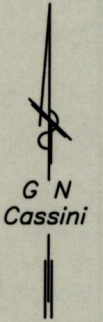
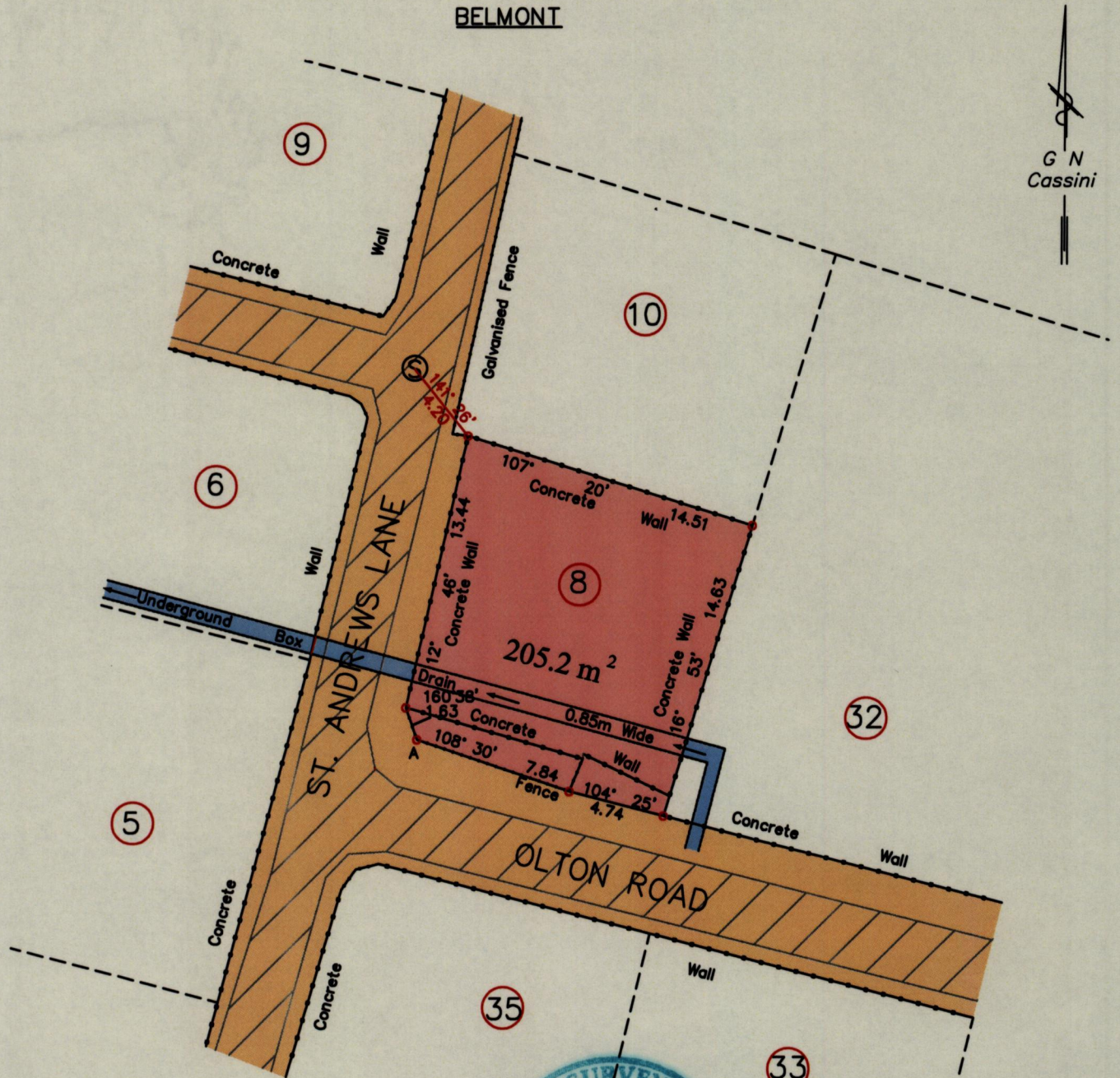
57

U.P.R.N.....

Process Jdt 109160

City of Port - of - Spain
County of St. George
Cadastral Sheet A20K 13E
3/c

BELMONT



A
Co-ordinates obtained by hand held G.P.S.
(WGS84 Datum Zone 20)
663709 m E
1178917 m N

Bk. 1212 Fol.36

Bearings are Cassini Grid based on Solar Observation

SCALE 1:300

○ Denotes King Post Found unless otherwise stated

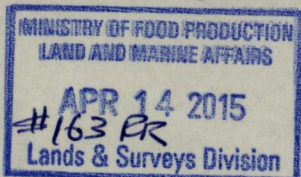
Distances are in Meters

Plan of a Parcel coloured pink in the City of Port-of -Spain

Containing together two hundred and five point two square meters

Surveyed by me, with due authority, in February 2015, for KESTON AND STACY ANN BALCOMBE

Certified correct in accordance with Regulation 25(1) of the Land Surveyors Regulations 1998



Entered on.....

Trinidad and Tobago Land Surveyor..... 18th March 2015