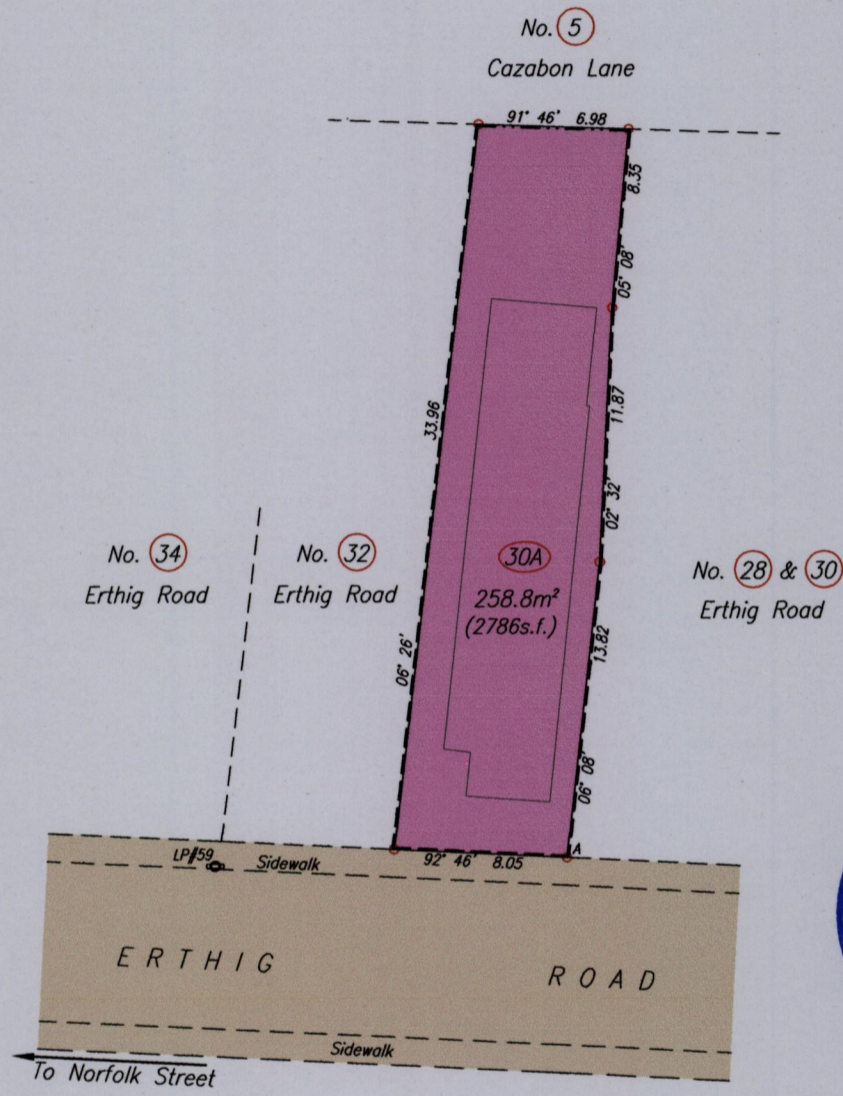
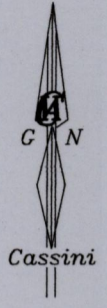


1561

49

Process ID#109147  
DE 201500615949D001

Cadastral Sheet. A.20.G  $\frac{13E}{4/c}$   
City of Port-Of-Spain  
County of St. George  
Lot#30A Erthig Road,  
Belmont



--- Wall  
- - - Galvanize Fence

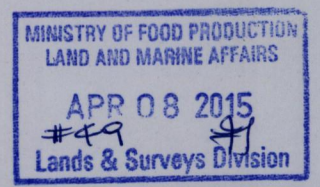
A	-	LP#59	268° 40'	16.36
A	N	1179 316	Hand Held GPS	
	E	0663 289	WGS84 Zone20	

SCALE 1/350  
Distances are in metres

○ Denotes Iron Put unless otherwise stated  
Bearings are Cassini Grid based on Solar Observations  
PLAN of a Parcel of land coloured pink in the City of Port-Of-Spain  
Containing two five eight point eight square metres  
Surveyed by me, with due authority, in March 2015 for Susan Nurse  
Certified Correct In accordance with Regulation 25 (1) of the Land Surveyors' Regulations 1998,

*Nasser Abdul*  
Trinidad & Tobago Land Surveyor

Entered On..... 2015



368