

R.D.# 201200385990

13D&23A

Cadastral Sheet 3/b (A.20.E.)

Location Diagram

Process ID# 109141

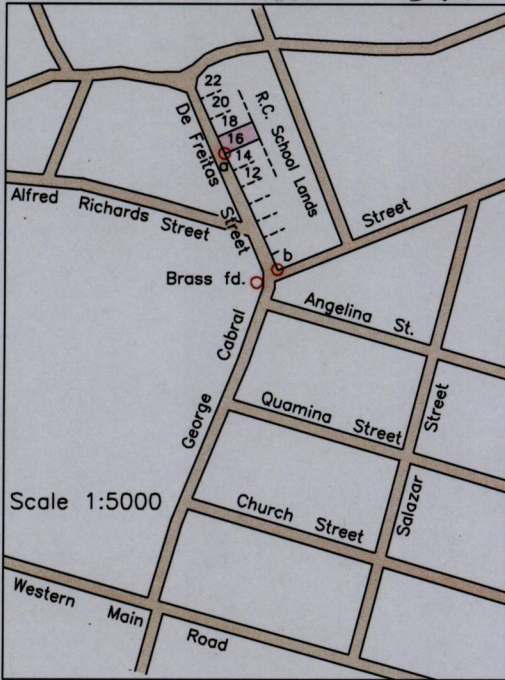
City of Port of Spain

County of St. George

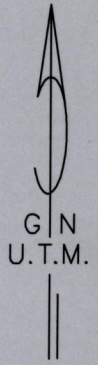
St. James

47

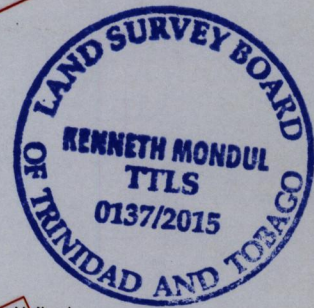
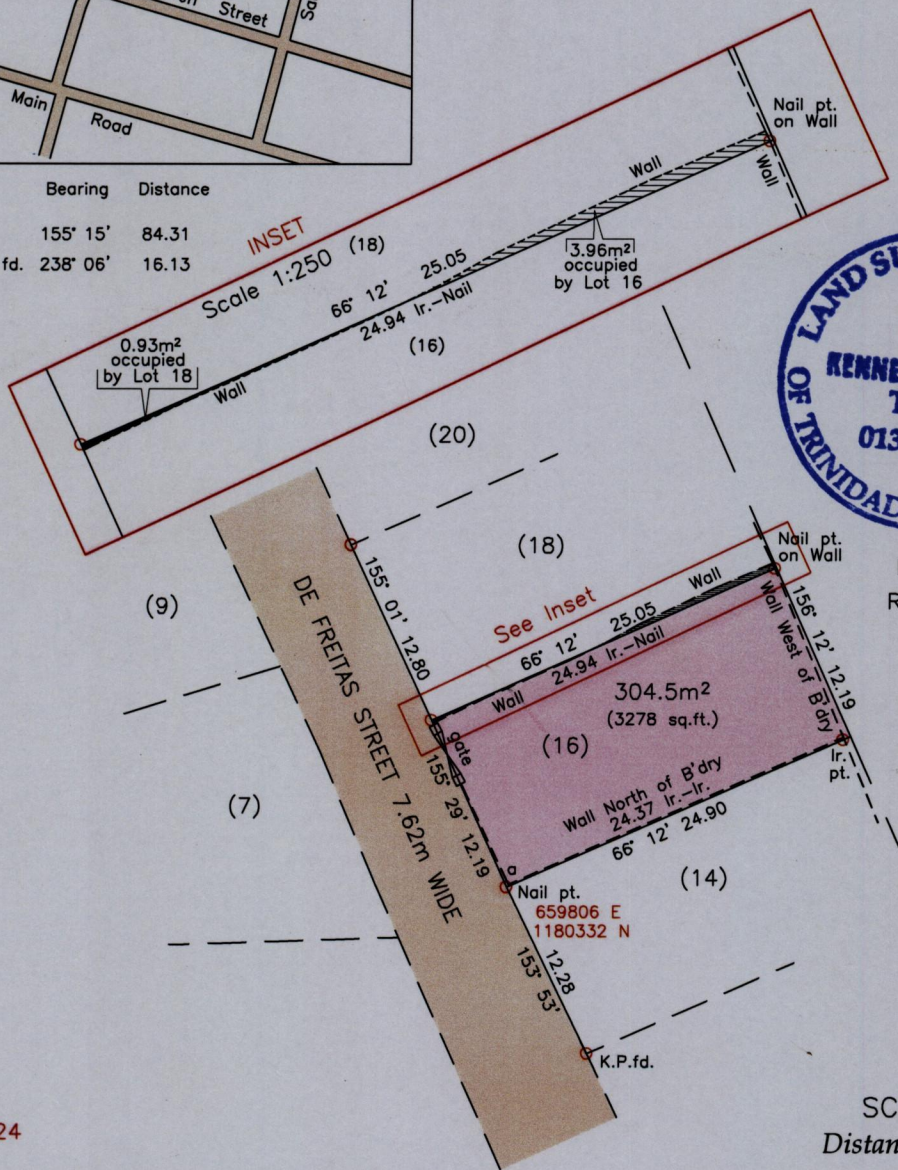
1561



REDEFINITION



From	To	Bearing	Distance
a	b	155° 15'	84.31
b	Brass fd.	238° 06'	16.13



Mucurapo R.C School

Reference: PLAN P.G.24

SCALE 1:500 Distances are in METRES

- Notes: ○ Denotes lr.fd. unless otherwise indicated
 Bearings are U.T.M. Grid based on Solar Observations
 Coordinates obtained by handheld GPS (UTM Zone 20, Naparima ± 5.0m)

PLAN of a parcel of land coloured pink in the City of Port of Spain
 Containing three hundred and four point five square metres
 Surveyed by me, with due authority, in March 2015 for Rawle Mitchell
 Certified Correct in accordance with Regulation 25(1) of the Land Surveyors Regulations 1998.

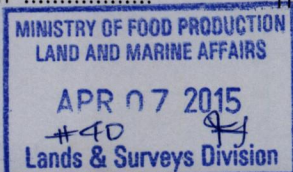
Checked by

Kenneth Mondul

Entered on

Trinidad and Tobago Land Surveyor, 31st March 2015

KM03/2015



489