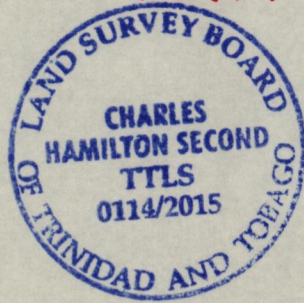


1561

225



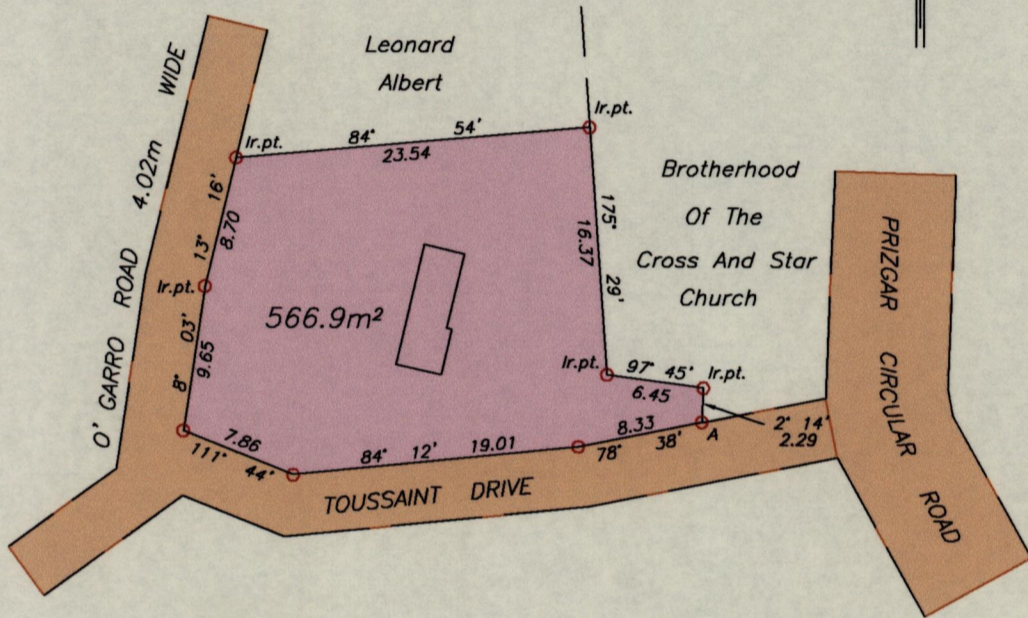
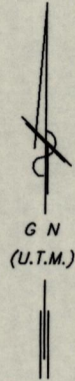
Process 111322

REFERENCE:

Deed Ref: 2370/1997

23B
Cadastral Sheet 1/b/1, A.20.K.
Ward of St. Ann's
County of St. George

LAVENTILLE



A = N 1177514 +/- 5.0m
E 664629
UTM 20 Naparima 1955 Datum
Hand Held GPS

SCALE 1:500
Distances are in METRES

○ Denotes Nail put unless otherwise stated
Bearings are U.T.M. Grid based on Solar observations

PLAN of a Parcel of land coloured pink in the Ward of St. Ann's
Containing five hundred and sixty six point nine square metres
Surveyed by me, with due authority, in June 2015 at the request of Aldwyn Collins
Certified correct in accordance with Regulation 25 (1) of the Land Surveyors Regulations 1998.

Charles H. Second T.T.L.S.

Entered on

Trinidad & Tobago 24th July 2015
Land Surveyor

