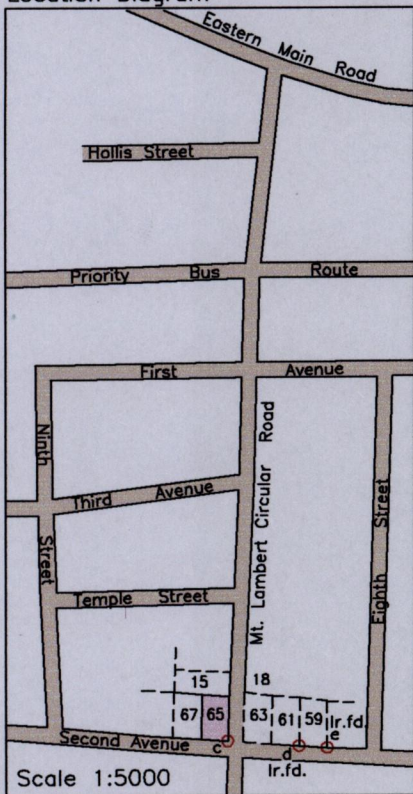


1561

23C

223

Location Diagram



Cadastral Sheet 1/b (B.17.0.)

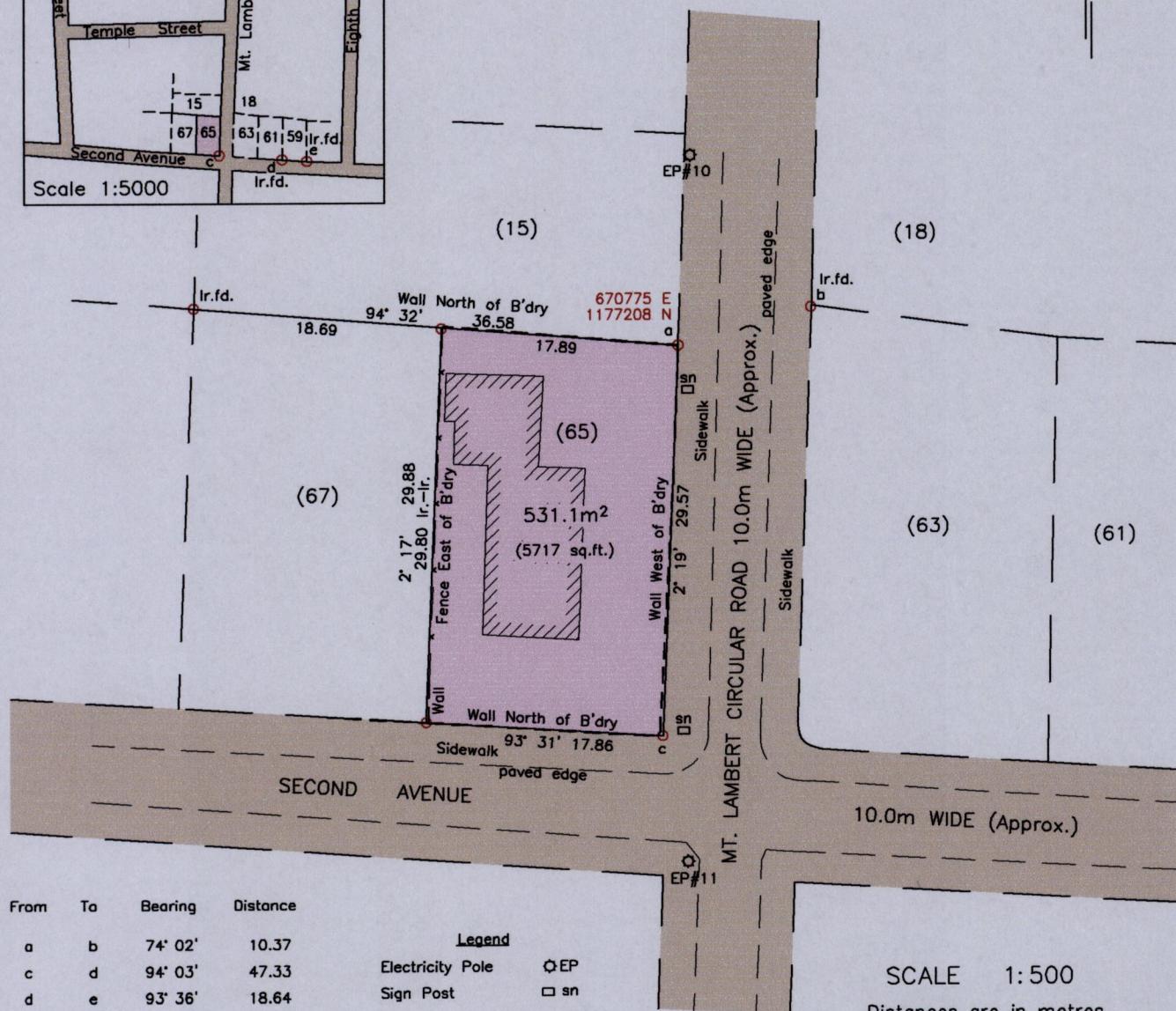
Ward of St. Anns

County of St. George

Mt. Lambert

Process ~~10~~ 111314

G N
U.T.M.



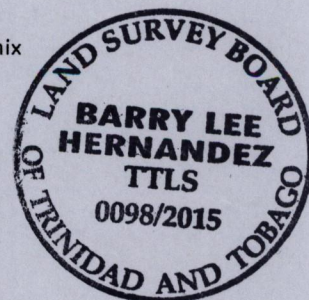
From	To	Bearing	Distance
a	b	74° 02'	10.37
c	d	94° 03'	47.33
d	e	93° 36'	18.64

Legend	
Electricity Pole	⊙ EP
Sign Post	□ sn

SCALE 1:500
Distances are in metres

Notes: ○ Denotes Ir.pt. unless otherwise stated
 Bearings are U.T.M. Grid based on Solar Observations
 Previous survey of Lot 59 by Hugo Somarsingh in March 2012 for Constance Mornix
 Coordinates obtained by handheld GPS (UTM Zone 20, Naparima ± 5.0m)

PLAN of a parcel of land coloured pink in the Ward of St. Anns
 Containing five hundred and thirty one point one square metres
 Surveyed by me, with due authority, in July 2015 for Brenda Pantin
 Certified Correct in accordance with Regulation 25(1) of the Land Surveyors Regulations 1998.



Checked by
Entered on

Barry Hernandez
 Trinidad and Tobago Land Surveyor, 27th July 2015.

