

1561

2013

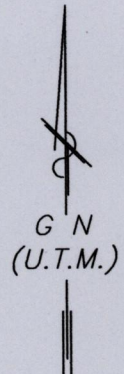
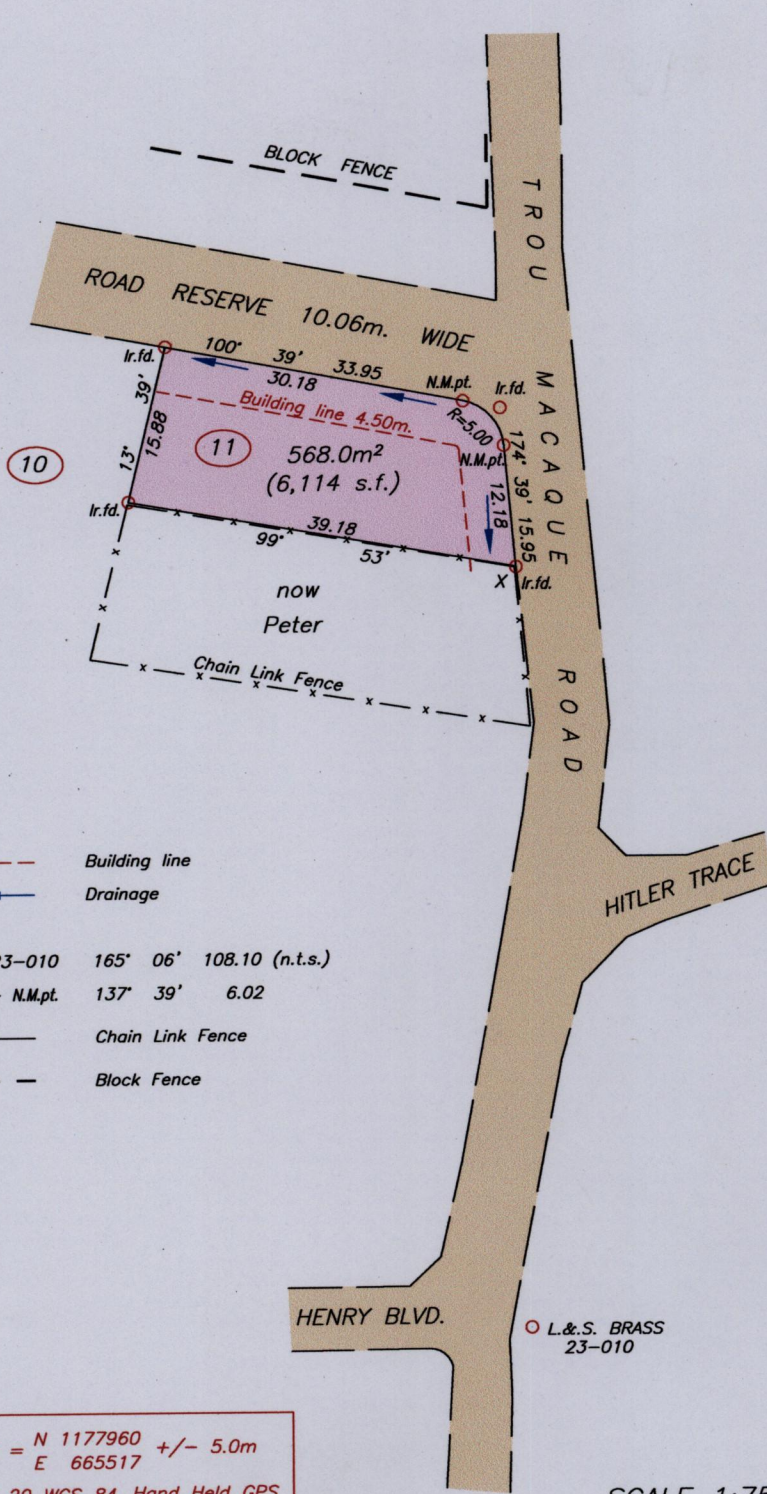
23B

Cadastral Sheet 1/b/2, B.17.

Ward of St. Ann's

County of St. George

Process ~~SD#~~ 11146



- - - - - Building line
- ← Drainage
- X - Brass 23-010 165° 06' 108.10 (n.t.s.)
- N.M.pt. - N.M.pt. 137° 39' 6.02
- x - Chain Link Fence
- - - - - Block Fence

X = N 1177960 +/- 5.0m  
 E 665517  
 UTM 20 WGS 84 Hand Held GPS



SCALE 1:750  
Distances are in METRES

Bearings are U.T.M. Grid based on Solar observations

PLAN of a Parcel of land coloured pink in the Ward of St. Ann's  
 Containing five hundred and sixty eight point zero square metres  
 Surveyed by me, with due authority, in June 2015 for Justyn Woodley  
 Certified correct in accordance with Regulation 25 (1) of the Land Surveyors Regulations 1998.

..... T.T.L.S.  
 Entered on .....  
 Trinidad & Tobago ..... 17th July 2015  
 Land Surveyor

