

1501

2012

Process #11193

13E

Cadastral Sheet 3/c A.20.G.

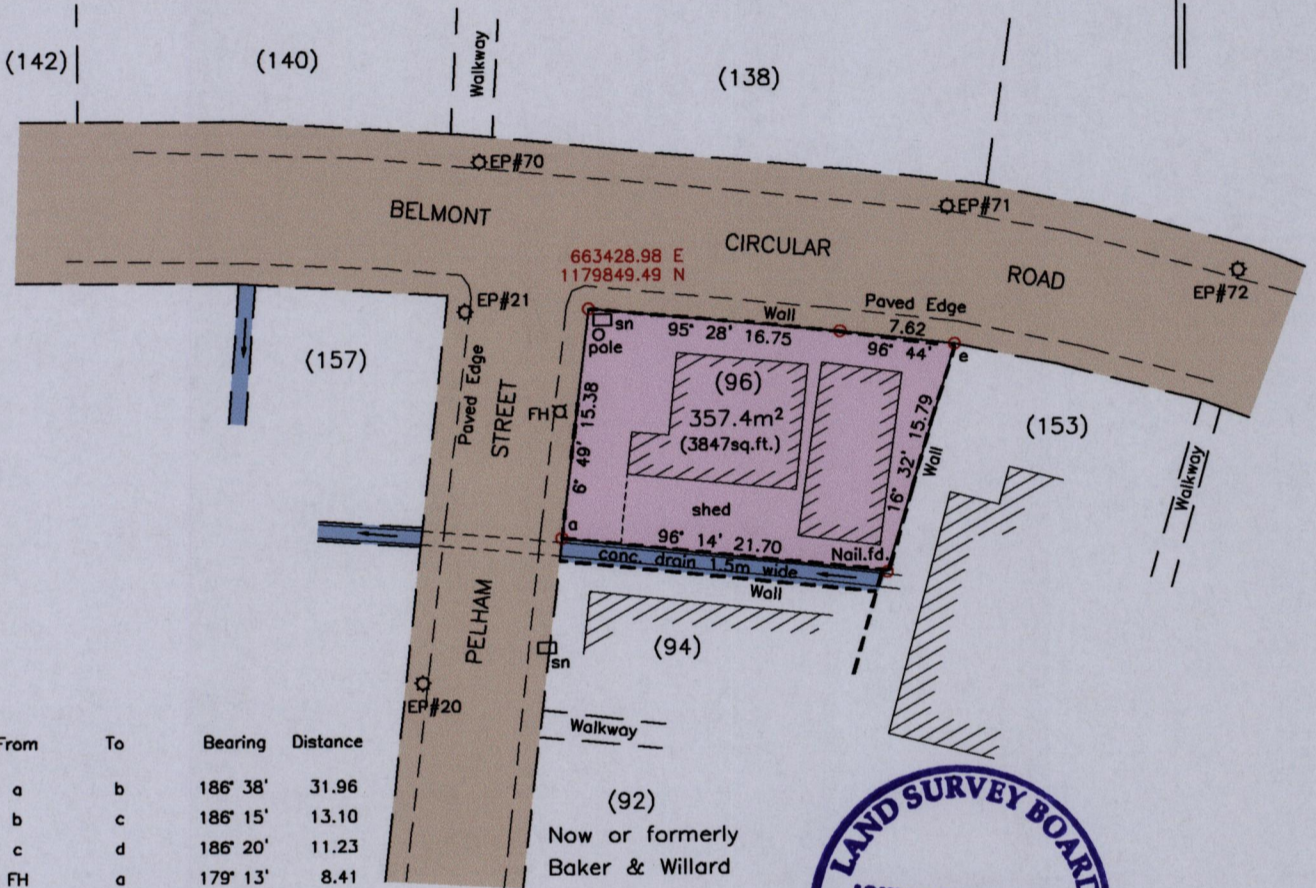
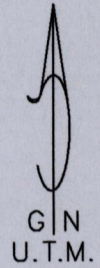
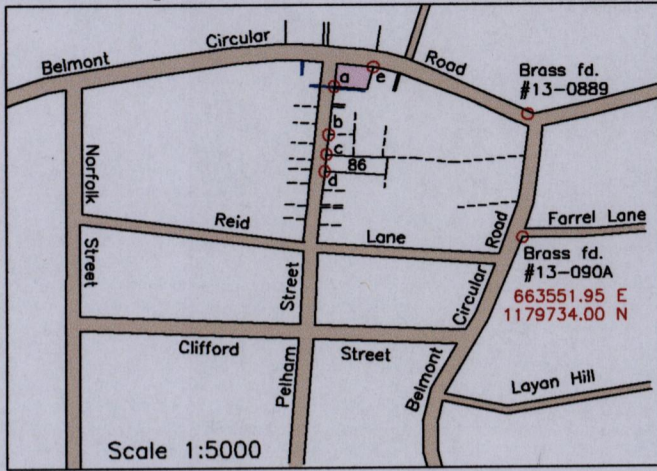
City of Port of Spain

County of St. George

Lot 96 Pelham St. also called

Lot 155 Belmont Circular Rd.

Belmont



From	To	Bearing	Distance
a	b	186° 38'	31.96
b	c	186° 15'	13.10
c	d	186° 20'	11.23
FH	a	179° 13'	8.41
e	Brass fd. #13-0889	107° 11'	107.24
Brass fd. #13-0889	Brass fd. #13-090A	182° 38'	81.41

References:
 Bk.1198 Fol.211
 Bk.1198 Fol.209
 Bk.1188 Fol.195

Legend

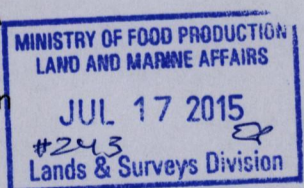
Electricity Pole	⊙ EP
Fire Hydrant	⊠ FH
Sign	□ sn
Wall	---



SCALE 1:500

Distances are in METRES

Notes: ○ Denotes lr.f.d. unless otherwise indicated
 Bearings are U.T.M. Grid based on Solar Observations
 Previous survey of Lot 96 by Peter Goodridge in June 2001
 Previous survey of Lot 86 by J. de Sormeaux in Aug. 2014 for Rupert Roy Williams
 Coordinates (UTM Zone 20, Naparima) obtained from Brass fd. #13-090A



PLAN of a parcel of land coloured pink in the City of Port of Spain
 Containing three hundred and fifty seven point four square metres
 Surveyed by me, with due authority, in March 2015 for Robert Edward McLean
 Certified Correct in accordance with Regulation 25(1) of the Land Surveyors Regulations 1998.

Checked by
 Entered on
 John de Sormeaux
 Trinidad and Tobago Land Surveyor, 10th July 2015.