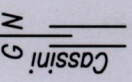
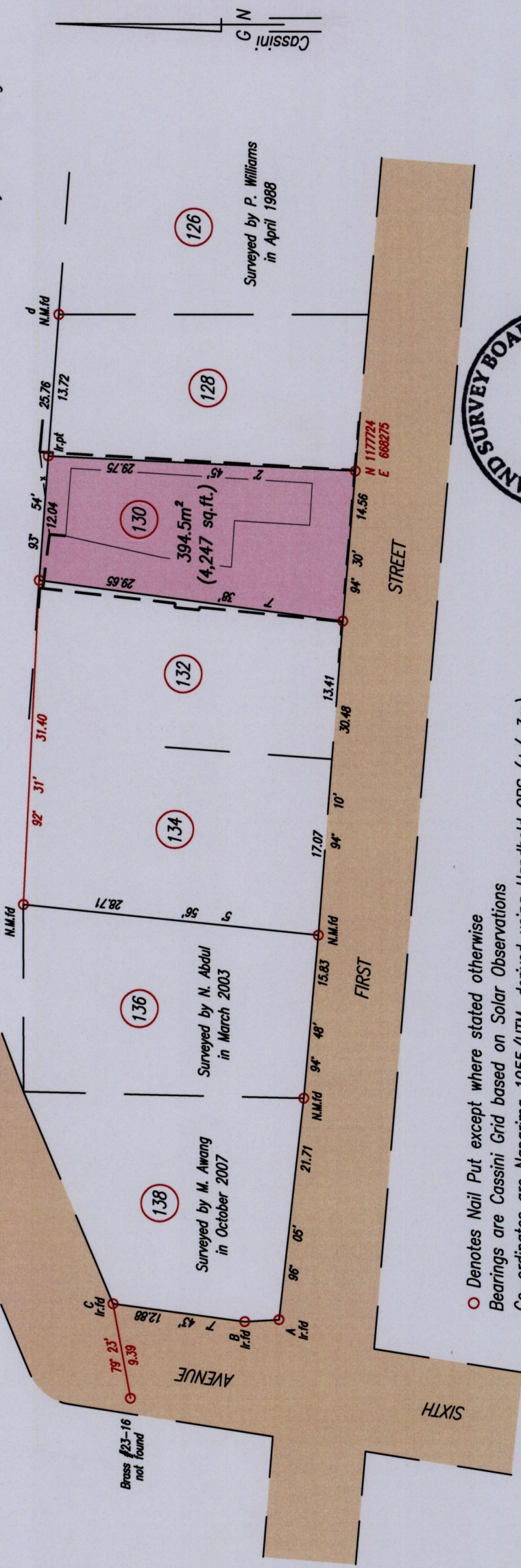


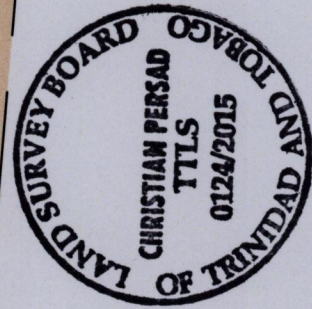
Cadastral Sheet  $\frac{23B}{2/b}$  (B.17.1)  
Ward of St. Anns  
County of St. George

Process JD-#111169  
A - B : 356' 46" 3.33



— — — — — Brick Wall  
— x — — — — — Wire Fence

SCALE 1:500  
Distances are in metres



○ Denotes Nail Put except where stated otherwise  
Bearings are Cassini Grid based on Solar Observations  
Co-ordinates are Naparima 1955/UTM, derived using Handheld GPS (+/-3m)  
PLAN of a parcel of land coloured pink in the Ward of St. Anns  
Containing three hundred and ninety four point five square metres  
Surveyed by me, with due authority, on July 10th 2015, at the request of Martin Rodney  
Certified correct in accordance with Regulation 25 (1) of the Land Surveyors Regulations 1998

Checked by.....  
Entered on.....  
Trinidad & Tobago Land Surveyor..... 13/07. 2015.

