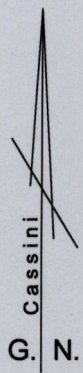


1561

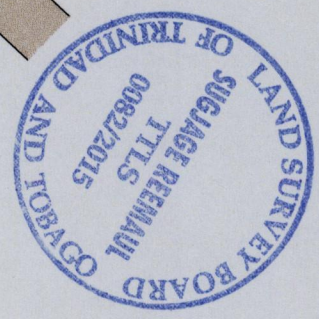
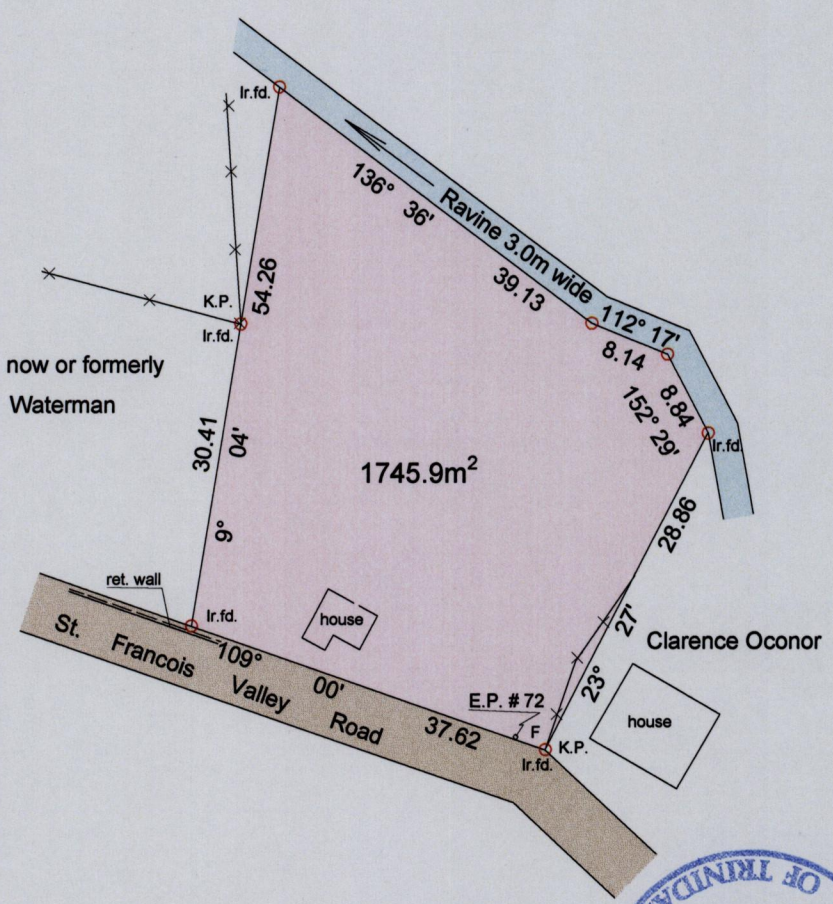
196

Process JD-111167

Cadastral Sheet A.20.G 13E  
Ward of St. Anns 3/c  
County of St. George



BELMONT



@F N 1179422 E 0664226 +/- 5.00m Naparima datum U.T.M. Zone 20 handheld G.P.S.

○ Denotes Iron put except stated otherwise

Scale 1 : 750

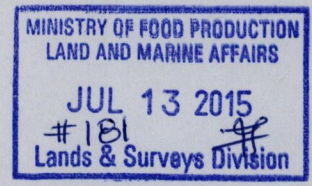
Note : Bearings are Cassini Grid based on Solar Observations

Distances are in metres

Plan of a parcel of land coloured pink in the Ward of St.Anns  
Containing one thousand seven hundred and forty-five point nine square metres  
Surveyed by me with due authority in July 2015 for Neisa Small  
Certified correct in accordance with Reg.25(1) of the Land Surveyors' Regulations 1998

Checked by.....  
Entered on.....

*Sugage Reemau*  
Trinidad & Tobago Land Surveyor  
date *13 July* 2015



36P