

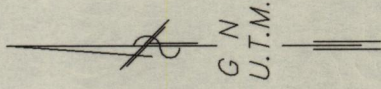
Cadastral Sheet A.20.B. 13D & 23A  
2/c

Ward of St. Anns

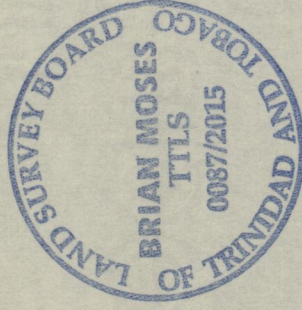
County of St. George

Maraval

Process SD# 111166

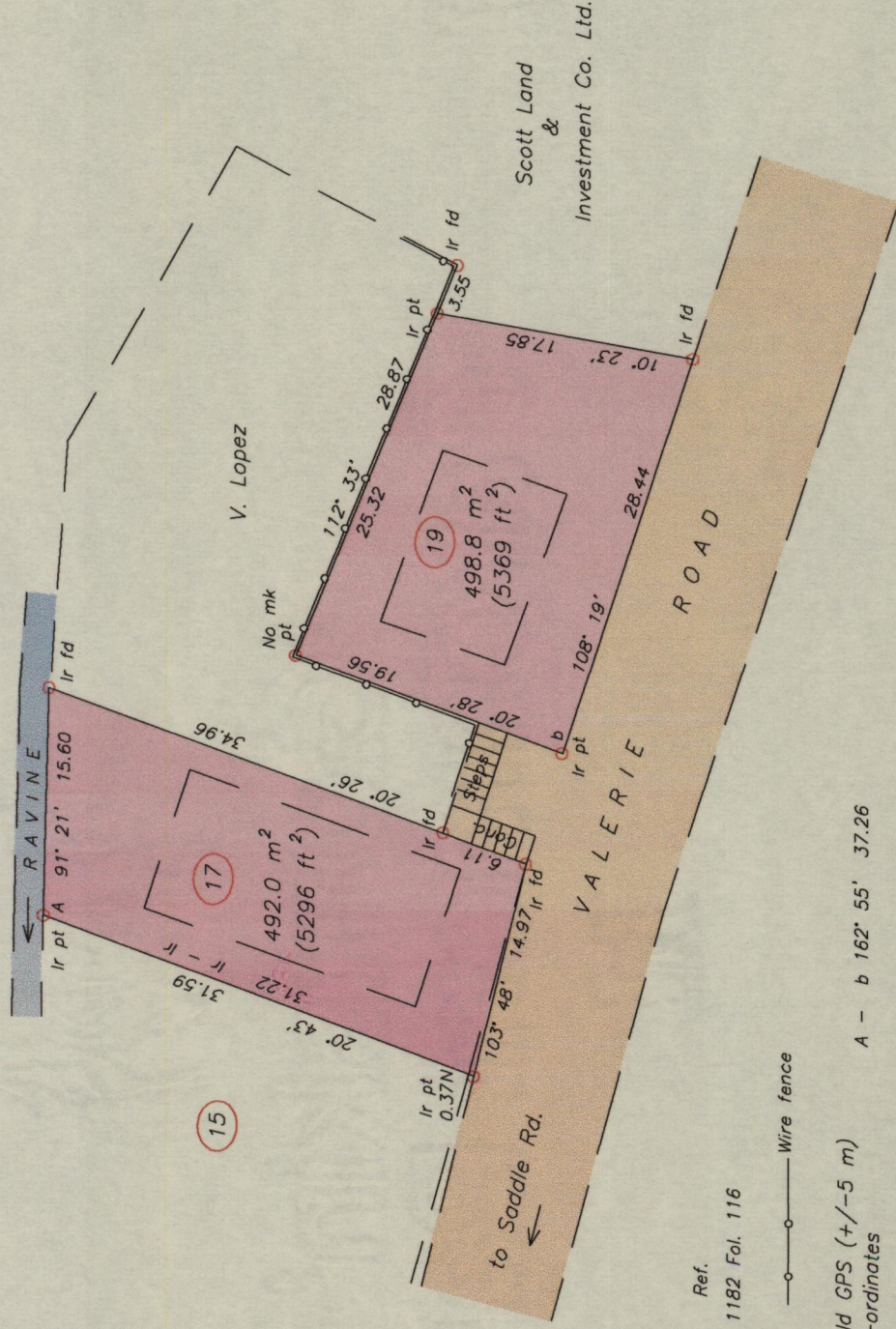


1561



195

SCALE 1:500  
Distances are in METRES



Scott Land  
&  
Investment Co. Ltd.

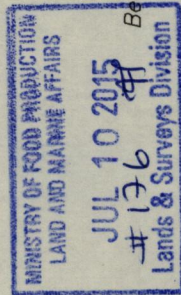
Ref.  
Bk. 1182 Fol. 116

A - N 1181612  
E 661812

Derived From Hand-Held GPS (+/-5 m)  
U.T.M. 20, WGS 84 Co-ordinates

Bearings are UTM Grid based on Solar observations

A - b 162° 55' 37.26



PLAN of two Parcels of land coloured pink in the Ward of St. Anns  
Containing four hundred and ninety two point zero square metres &  
four hundred and ninety eight point eight square metres

Surveyed by me, with due authority, in June, 2015 for Marlon Moore & Ria Garcia respectively  
Certified Correct in accordance with Regulation 25 (1) of the Land Surveyors' Regulations 1998

*Brian Moses*  
Trinidad & Tobago Land Surveyor (T.T.L.S.)

10<sup>th</sup> July 2015

Entered

260 + 8483