

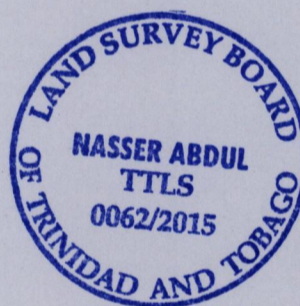
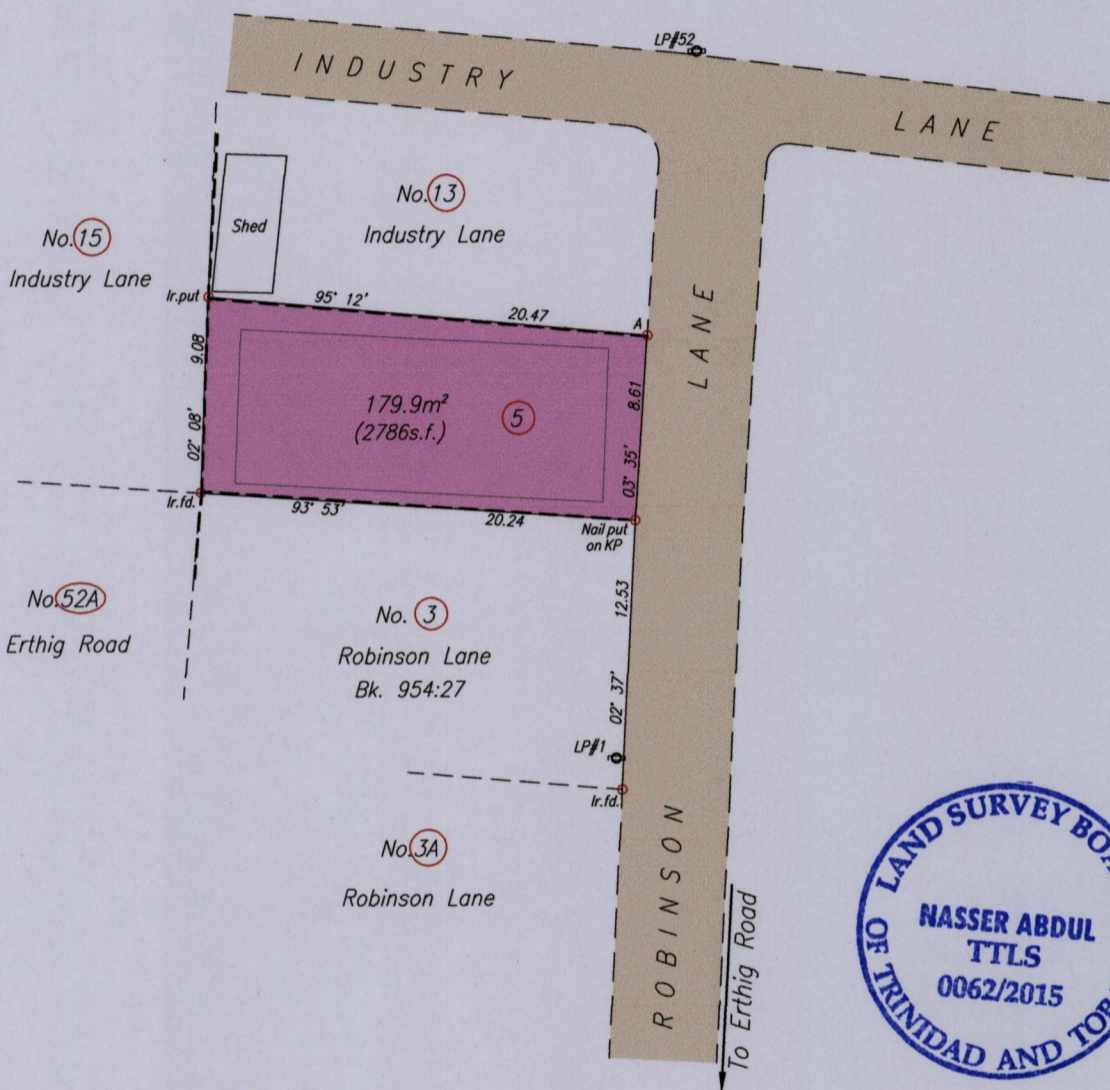
1561

1339

Process ~~SD~~ 111142

Cadastral Sheet. A.20.G  $\frac{13D}{4/d}$   
City of Port-Of-Spain  
County of St. George

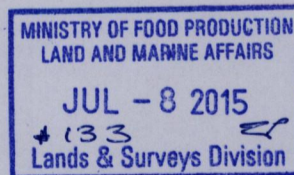
Lot#5 Robinson Lane,  
Belmont



A - LP#1	184° 03'	19.69
A - LP#52	09° 45'	13.40
A	N 1179 316	Hand Held GPS
	E 0663 289	WGS84 Zone20

--- Wall

SCALE 1/350  
Distances are in metres



○ Denotes Nail Put unless otherwise stated  
Bearings are Cassini Grid based on Solar Observations  
PLAN of a Parcel of land coloured pink in the City of Port-Of-Spain  
Containing one seven nine point nine square metres  
Surveyed by me, with due authority, in July 2015 for Kendell Pierre and Judy Pierre  
Certified Correct In accordance with Regulation 25 (1) of the Land Surveyors' Regulations 1998,

*Kendell Pierre*  
#133

Entered On..... Trinidad & Tobago Land Surveyor ..... 2015