

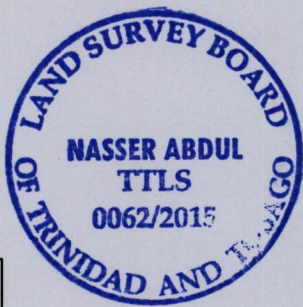
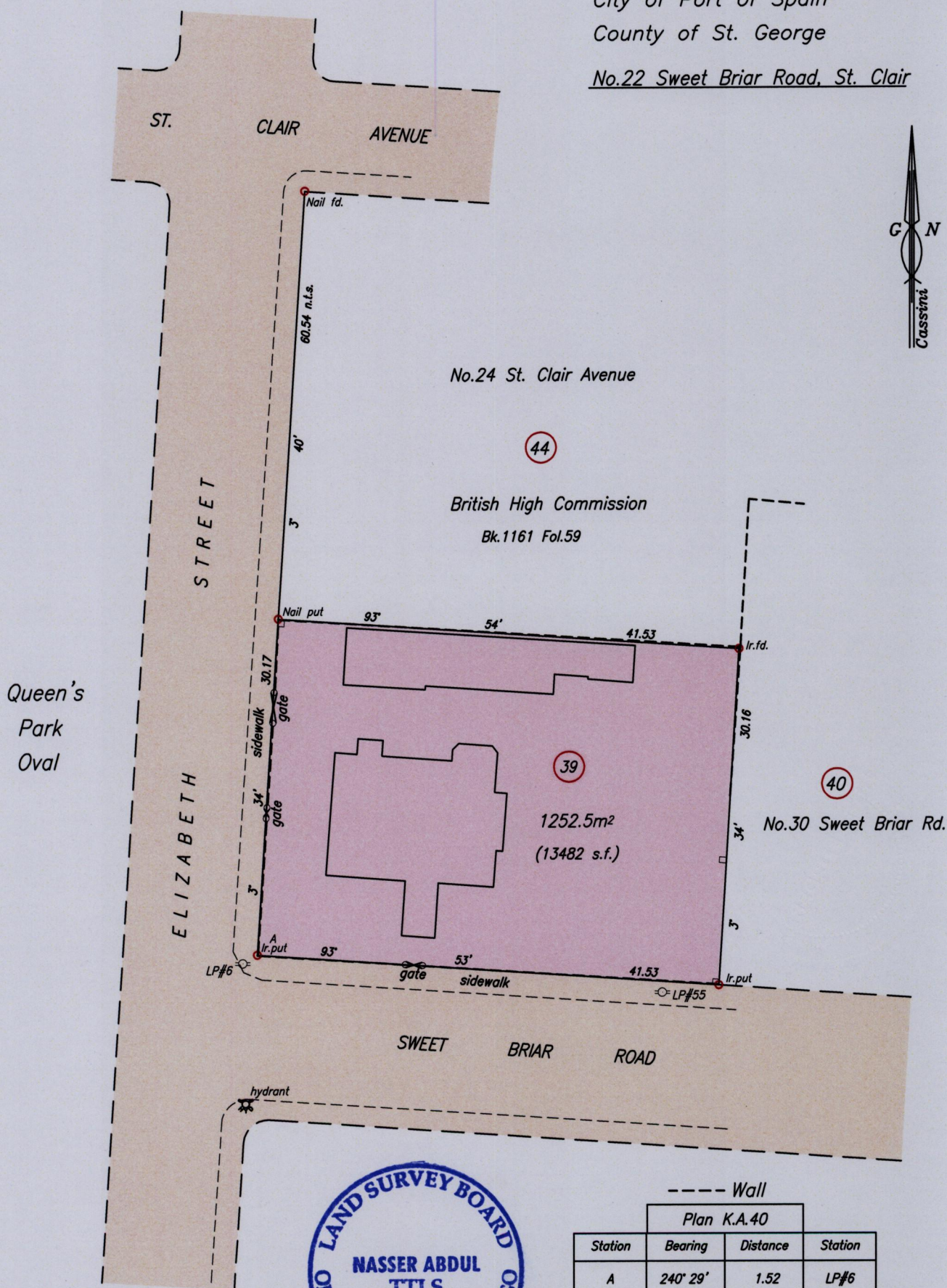
1561

500 1833

NASSER ABDUL T.T.L.S. Phone : 620-LAND 645-6488

Process ID# 111134

Cadastral Sheet A.20.F. 13D & 23A
4/a/4
City of Port of Spain
County of St. George
No.22 Sweet Briar Road, St. Clair



--- Wall

Plan K.A.40			
Station	Bearing	Distance	Station
A	240° 29'	1.52	LP#6
A	95° 24'	36.55	LP#55
A	184° 28'	13.44	hydrant

A Ir.put N 1179575 Hand Held GPS +/- 5m
E 661574 UTM proj. WGS84 datum

SCALE 1/500
Distances are in metres

Bearings are Cassini Grid based on Solar Observations
 PLAN of a Parcel of land coloured pink in the City of Port of Spain
 Containing one thousand two hundred and fifty two point five square metres
 Surveyed by me with due authority in June 2015 for Ginamco Investment Limited
 Certified Correct in accordance with Regulation 25 (1) of the Land Surveyors Regulations 1998,

MINISTRY OF FOOD PRODUCTION
 LAND AND MARINE AFFAIRS
 JUL - 7 2015
 #85 RR
 Lands & Surveys Division

Nasser Abdul
 7!! July

Entered on Trinidad & Tobago Land Surveyor2015